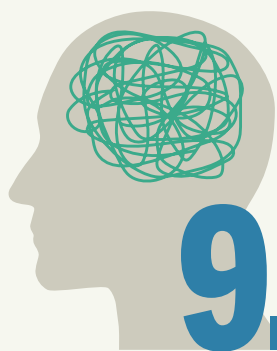


FLORIDA SCHOOL NURSES MAKE THE DIFFERENCE

EVERY STUDENT, EVERY DAY.

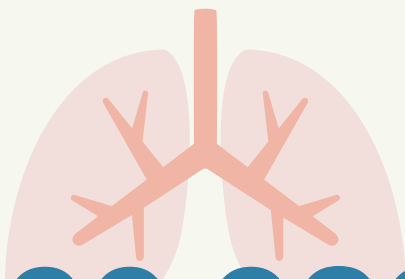
35,327

Number of students who have a life-threatening allergy to one or more items. School nurses provide the expertise to assist school staff and administrators in managing allergies safely. (2016–2017)



9.90%

Percentage of students ages 12–17 who had a major depressive episode in the past year. School nurses play a key role in identifying students, informing parents, and providing support services and care. (2014)



199,088

(7.1%) Number of students who have asthma. School nurses provide the support they need to be in and stay in school. (2016–2017)

AS CLINICIANS

Provide medical care and support for students who are ill, injured or have chronic health conditions

SCHOOL
NURSES
SUPPORT
HEALTH &
LEARNING

AS LEADERS

Provide coordination of health services policies and programs as the on-site health resource

AS ADVOCATES

Provide support to parents, students and staff to improve health programs and policies to support a healthy school environment

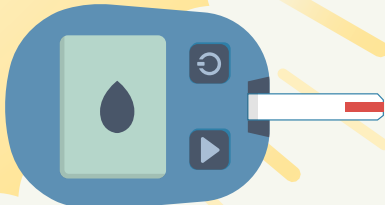


7.3%

Percentage of children under age 19 who are uninsured. The school nurse may be their primary health resource. (2015)

AS EDUCATORS

Provide health education to students and school staff to prevent disease and injury, and support school attendance



7,889

Number of students who have diabetes. School nurses provide critical health care support for school attendance. (2016–2017)

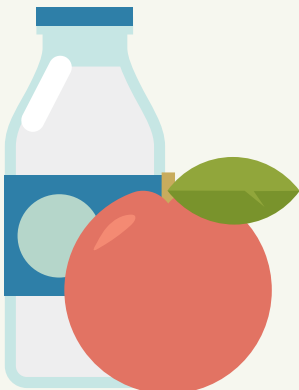
104,736



(18.54%) Number of 1st, 3rd and 6th grade students who are obese. School nurses provide this data which helps identify areas of need and support. (2016–2017)

1,851,959

(65.7%) Number of students who are eligible for the free and reduced lunch program. School nurses identify nutritional health issues and provide resources to help families resolve these problems. (2016–2017)



Florida Statistics Sources:
Florida Department of Health, School Health Services Program,
Florida Department of Education,
Substance Abuse and Mental Health Services Administration (SAMHSA),
United States Census Bureau Small Area Health Insurance Estimates (SAHIE)