

Suicides in Florida

SURVEILLANCE DATA: 2014

FLORIDA VIOLENCE AND INJURY PREVENTION

Non-fatal suicide attempts are more common.
Not all self-inflicted injuries are suicide attempts.



In 2014, there were **2,961 suicides** & another 9,077 hospitalizations for non-fatal self-inflicted injuries.

Certain characteristics are shared:

Depression, other mental disorders or substance abuse.

A **family history** that includes suicide, mental illness, violence substance, physical or sexual abuse.

**All People
Can Be at Risk
for Suicide.**

CONTRIBUTING FACTORS

- Prior suicide attempt.
- Having firearms in the home.
- Incarceration.
- Being exposed to others' suicidal behavior.

Know the warning signs— protect family & friends.

- Threats or comments about killing themselves.
- Increased alcohol and drug use.
- Aggressive behavior or rage.
- Withdrawal from friends, family and community.
- Dramatic mood swings.
- Preoccupation with death.
- Impulsive or reckless behavior.



45%

of people who die by suicide have seen a health provider in the month before their death.

20%

of suicide victims have had contact with mental health services before their death.

POSSIBLE SOLUTION

Train health care providers to recognize signs of suicide.

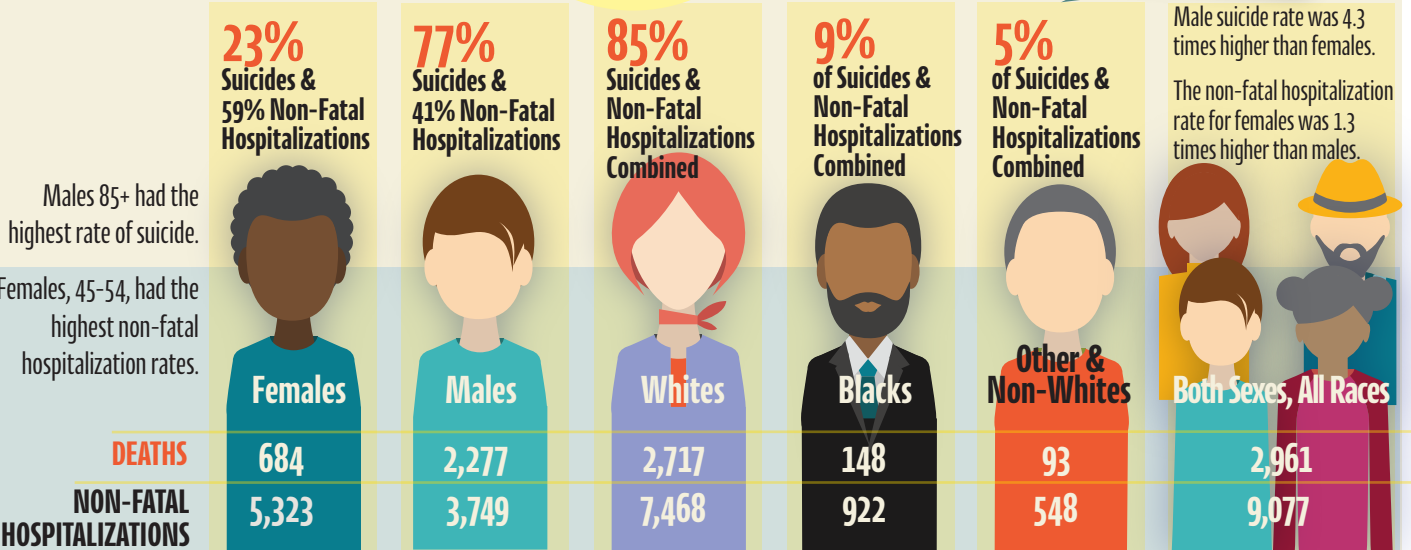


LEARN MORE: www.suicidepreventionlifeline.org—1-800-273-TALK (8255)
www.thetrevorproject.org—1-866-488-7386
www.floridasuicideprevention.org

Who is Injured?

Men are more likely to die by suicide.
Women are more likely to attempt suicide.

SUICIDE RATES:
MALES
 Increased from age 15-64.
 Decreased from age 55-74.
 Increased after age 74.
FEMALES
 Increased from age 15-54.
 Decreased through age 85+.



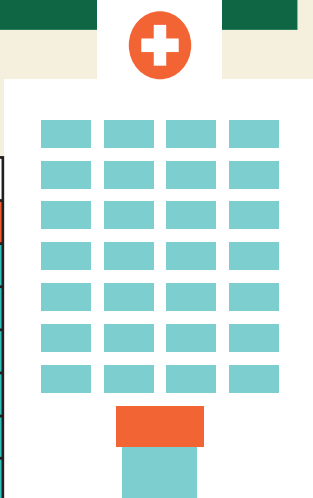
Males 85+ had the highest rate of suicide.
 Females, 45-54, had the highest non-fatal hospitalization rates.

Male suicide rate was 4.3 times higher than females.
 The non-fatal hospitalization rate for females was 1.3 times higher than males.

Men are more likely to use deadlier methods, such as firearms or suffocation.
 Women are more likely than men to attempt suicide by poisoning.

Suicide & Self Harm Rates per 100,000

Hospitalizations	
YEAR	RATE
2009	52.6
2010	52.4
2011	53.3
2012	52.2
2013	49.5
2014	46.4



Deaths	
YEAR	RATE
2009	15.3
2010	14.6
2011	14.6
2012	15.6
2013	15.0
2014	15.1

\$21,918
 Median admission charge for non-fatal assault injury hospitalizations.

\$357 MILLION
 Total charges exceeded this amount.

2 DAYS
 Median length of stay.



WHO PAID?
 Self-paid or Underinsured, 26%
 Commercial Insurance, 24%
 Medicare, 23%
 Medicaid, 24%