

Vaksen COVID-19



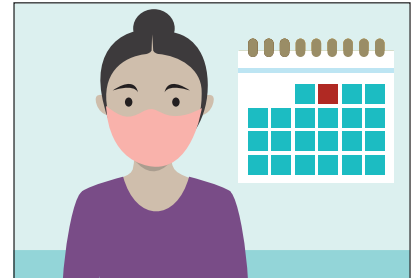
Si ou gen nenpòt kesyon oswa si ou bezwen èd, rele Sant Dapèl COVID-19 la:
1-866-779-6121. Sant lan louvri tout jounen ak chak jou.



COVID-19 se yon viris ki te fè anpil moun malad. Gen kèk moun ki mouri.



Kounye a, gen piki vaksen ki mete medikaman nan kò ou. Medikaman an pwoteje ou kont COVID-19.



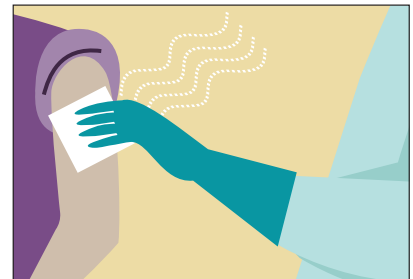
Lè tou pa m rive, mwen kapab pran vaksen pa m pou m rete an sante.



Mwen prale kay doktè pou m pran vaksen m.



M ap anrejistre. M ap chita epi tann tou pa m rive.



Yo pral fwote yon tanpon fre sou bra m. Li ka petèt gen yon sant dwòl.



M ap chita san bouje, epi lè sa, m ap santi piki a. M ap santi tankou yon zongle oswa yon piki.



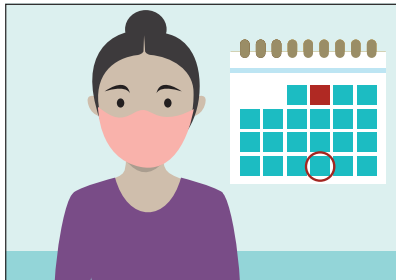
Aprè sa m ap gen yon pansman sou bra m.



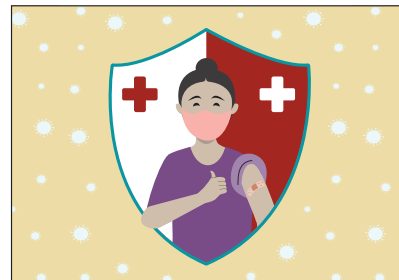
Doktè a oswa enfimye/enfimyè a ka petèt mande pou ou chita epi tann yon ti moman anvan ou ale lakay ou. Yo vle pou ou anfòm.



Y ap di w si w bezwen yon lòt piki pou w rete an sante.



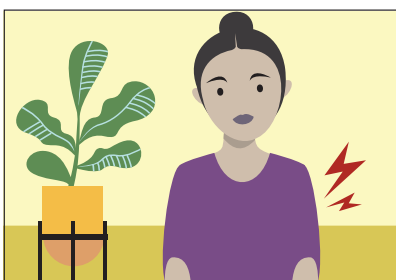
Ou ka petèt gen pou ou tounen nan 3 oswa 4 semèn pou yon dezyèm piki, epi . . .



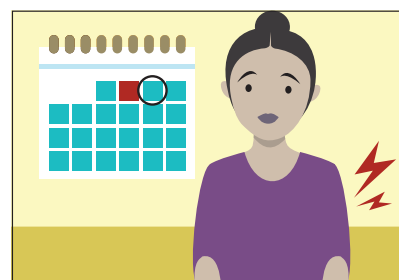
Ou pral pase nan menm etap yo pou dezyèm piki a.



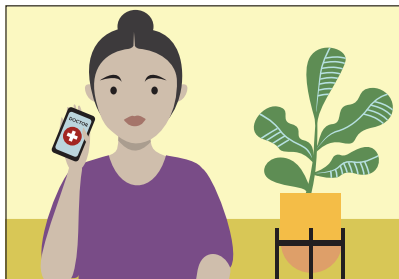
Lè yo di m anfòm, m ale lakay mwen.



M ka petèt gen yon tach wouj akòz piki a. Bra m ka petèt fè m mal. M ka petèt santi m fatige, gen yon maltèt oswa lafyèv.



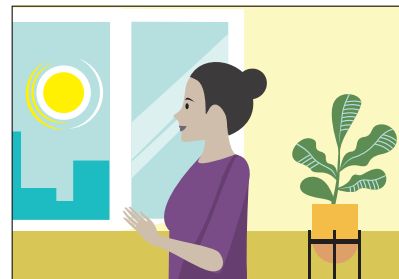
Aprè yon jou, si bra m toujou wouj ak fè mal, epi m santi m malad toujou . . .



Mwen kapab rele doktè m.



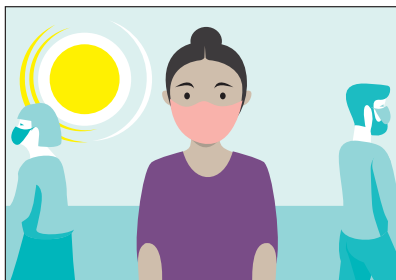
Oswa m ka rele Sant Dapèl COVID-19 la, 1-866-779-6121, epi m peze 3 pou jwenn èd.



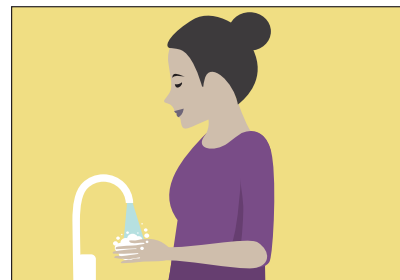
Aprè detwa jou, m ap santi m anfòm.



**M ap toujou gen pou
m mete mask mwen
pandan yon sèten tan.**

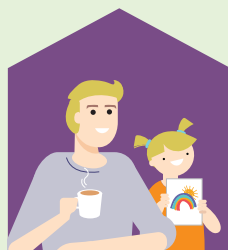


**M ap toujou eseye pa
rete twò pre lòt moun.**



**M ap toujou lave
men m. Anpil!**

Mwen pral kontan dèske m te bay patisipasyon m!



**Vaksen COVID-19 la pwoteje m,
li pwoteje fanmi m, zanmi m ak
lòt moun yo.**