

COVID-19 Weekly Situation Report: State Overview



Previous week (October 1, 2021 - October 7, 2021)

Published October 08, 2021

All data are provisional and subject to change. Data include only Florida residents.

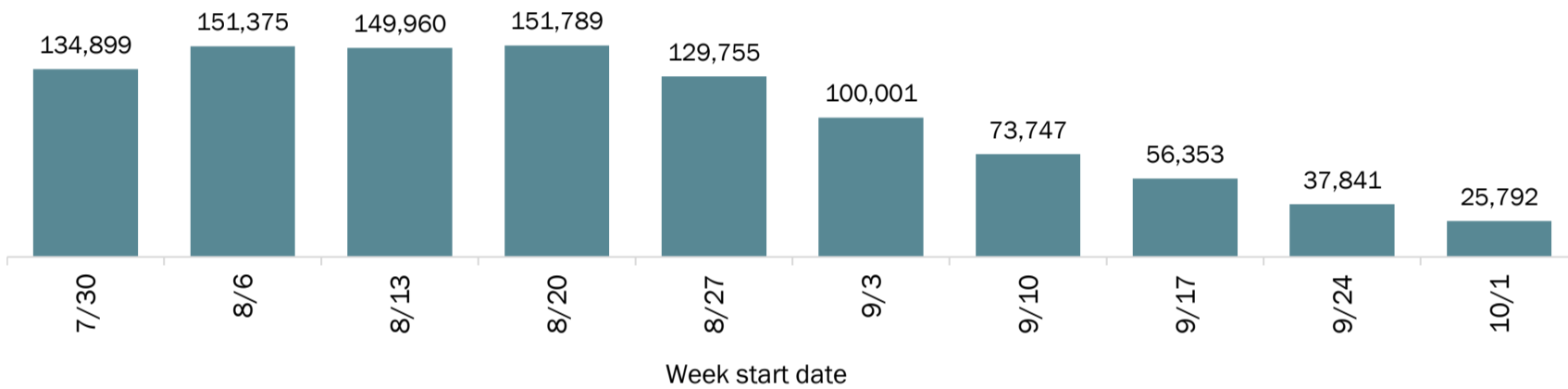
| Case data | Previous week | Cumulative |
|---------------------|---------------|------------------|
| Total | 25,792 | 3,601,755 |
| New case positivity | 4.8% | 21.2% |
| Deaths | 147 | 56,667 |

| Vaccine data | Previous week (doses administered) | Cumulative (people vaccinated) |
|------------------|---------------------------------------|-----------------------------------|
| Total | 311,720 | 13,718,950 |
| First dose | 67,544 | 1,753,762 |
| Series completed | 112,958 | 11,339,967 |
| Additional dose | 131,218 | 625,221 |

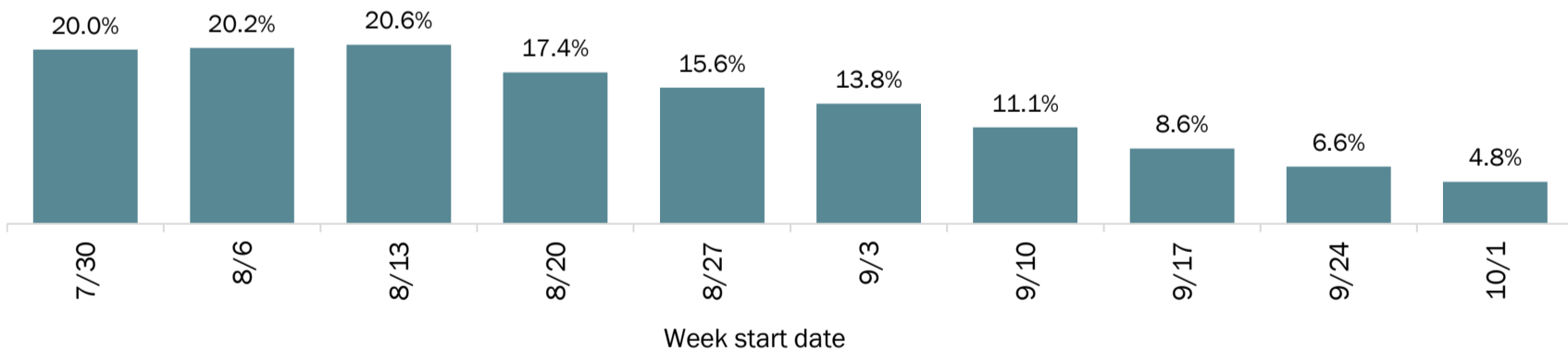
See additional notes at the end of this report for information on positivity rate, deaths, and vaccination status.

| Vaccine age groups | Population | Vaccinated |
|--------------------|-------------------|------------|
| Total (12+) | 19,119,043 | 72% |
| 12-19 | 1,972,084 | 55% |
| 20-29 | 2,744,987 | 53% |
| 30-39 | 2,784,698 | 63% |
| 40-49 | 2,669,253 | 71% |
| 50-59 | 2,925,172 | 77% |
| 60-64 | 1,438,783 | 84% |
| 65+ | 4,584,066 | 89% |

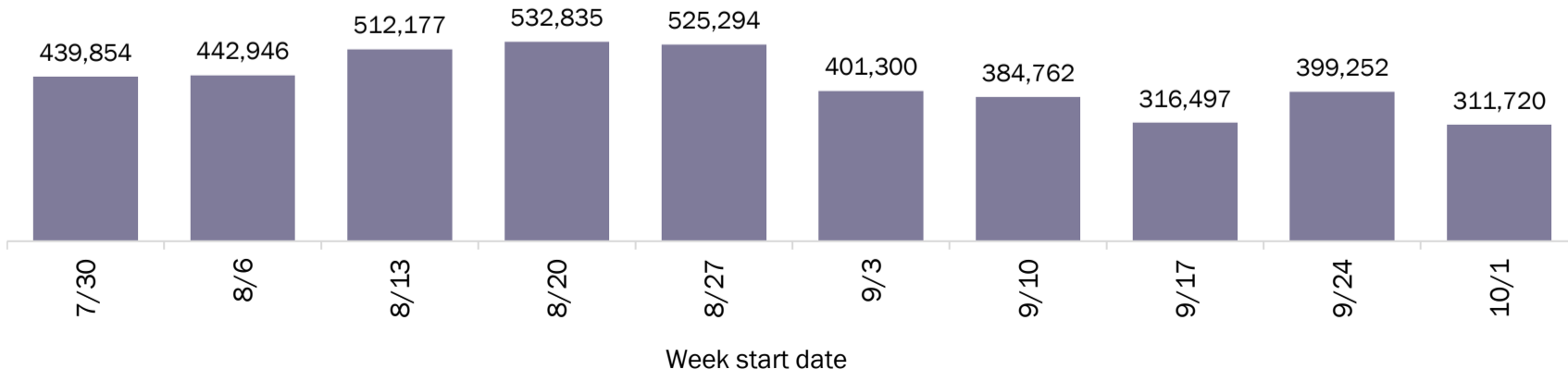
New cases for the past 10 weeks



New case positivity for the past 10 weeks



Number of doses administered in the past 10 weeks

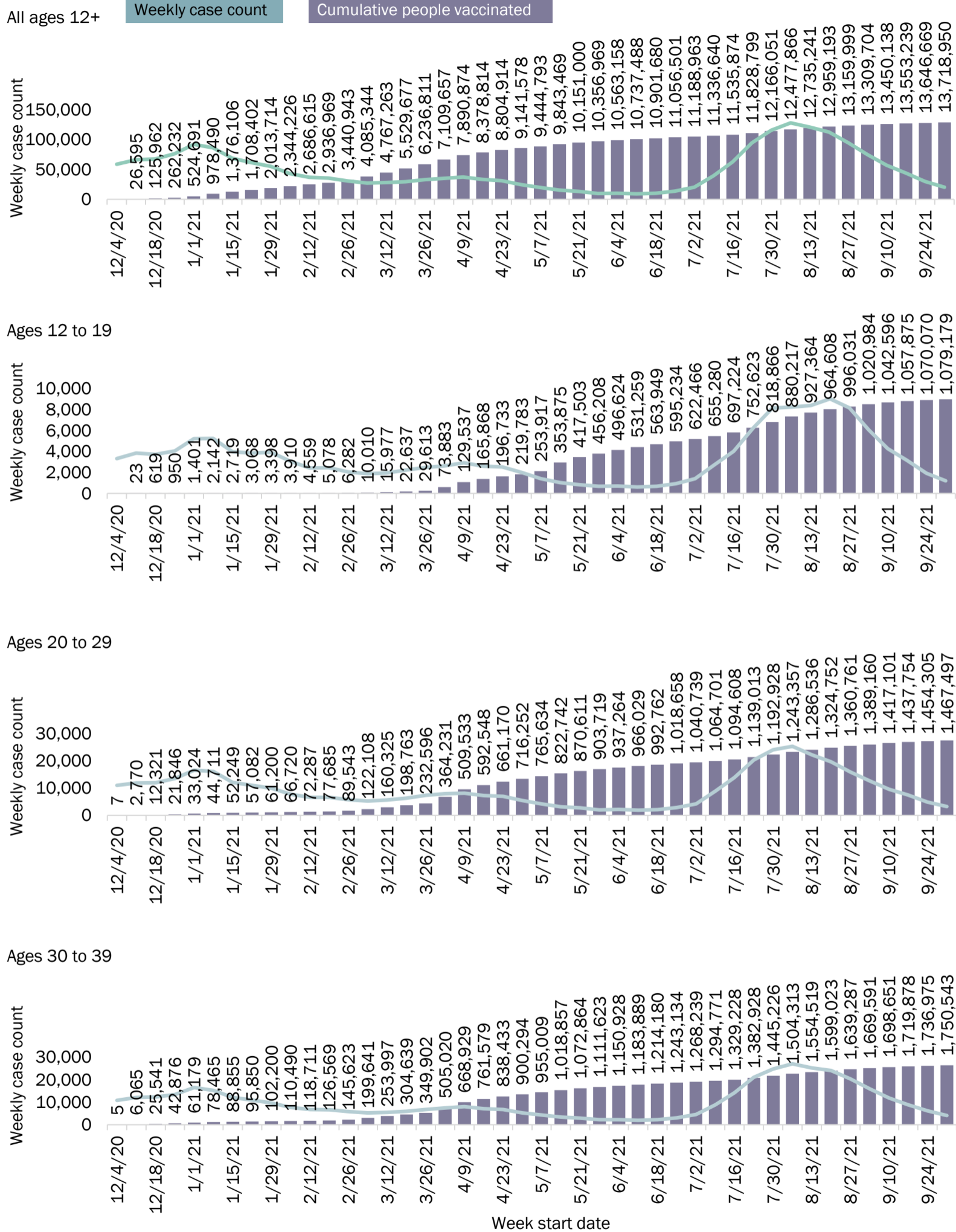


COVID-19 Weekly Situation Report: Vaccination Impact

Previous week (October 1, 2021 - October 7, 2021)



Cases and cumulative people vaccinated



COVID-19 Weekly Situation Report: Vaccination Impact

Previous week (October 1, 2021 - October 7, 2021)

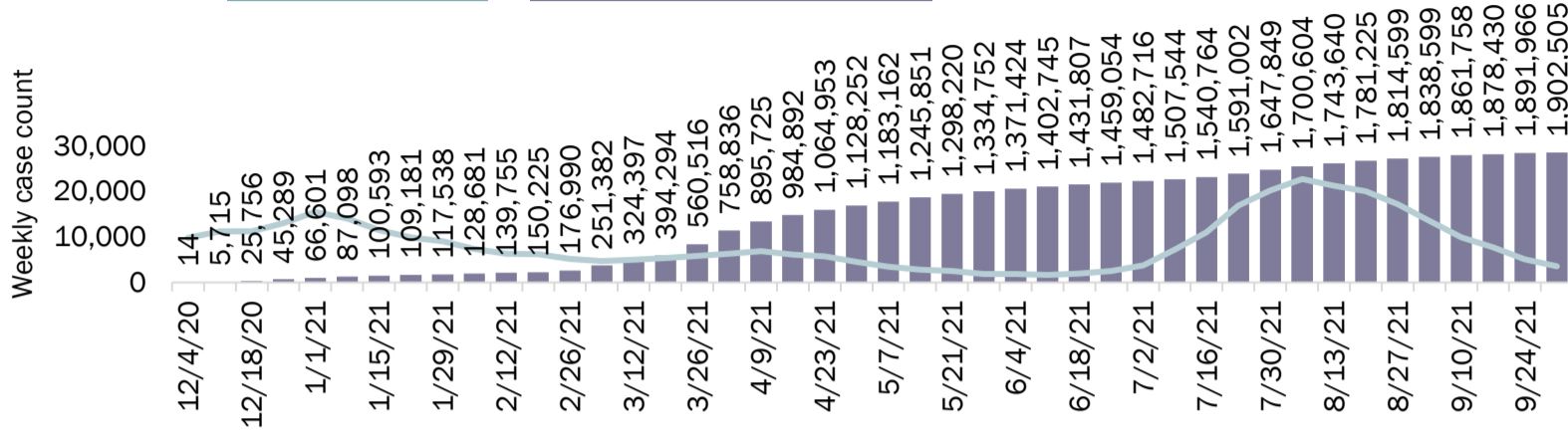


Cases and cumulative people vaccinated

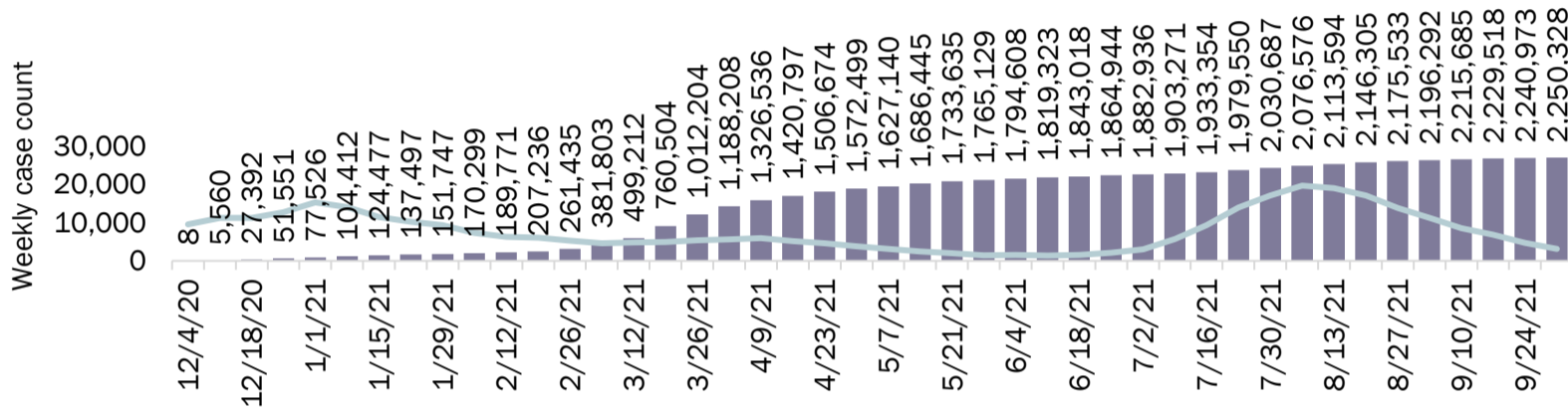
Ages 40 to 49

Weekly case count

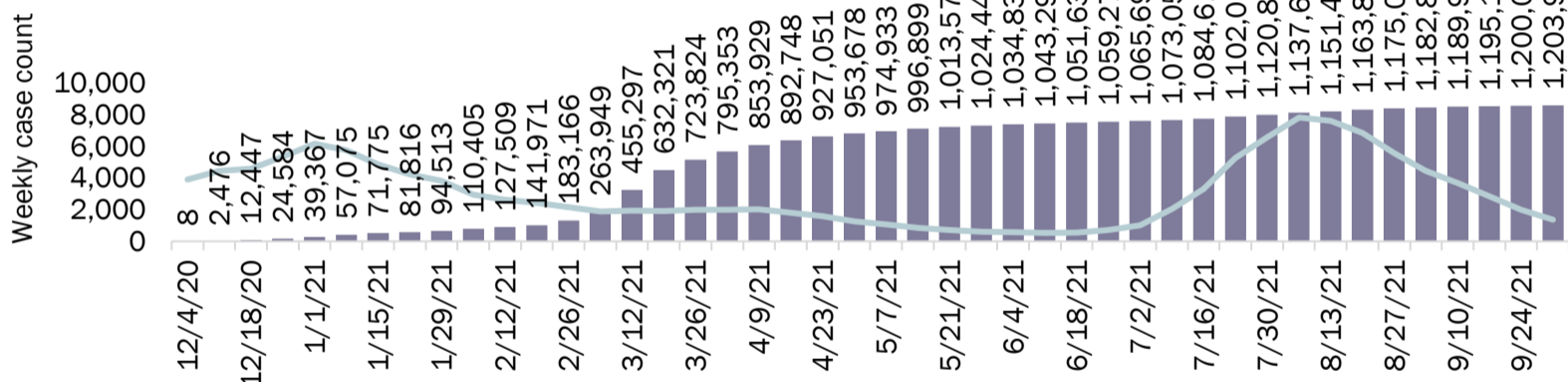
Cumulative people vaccinated



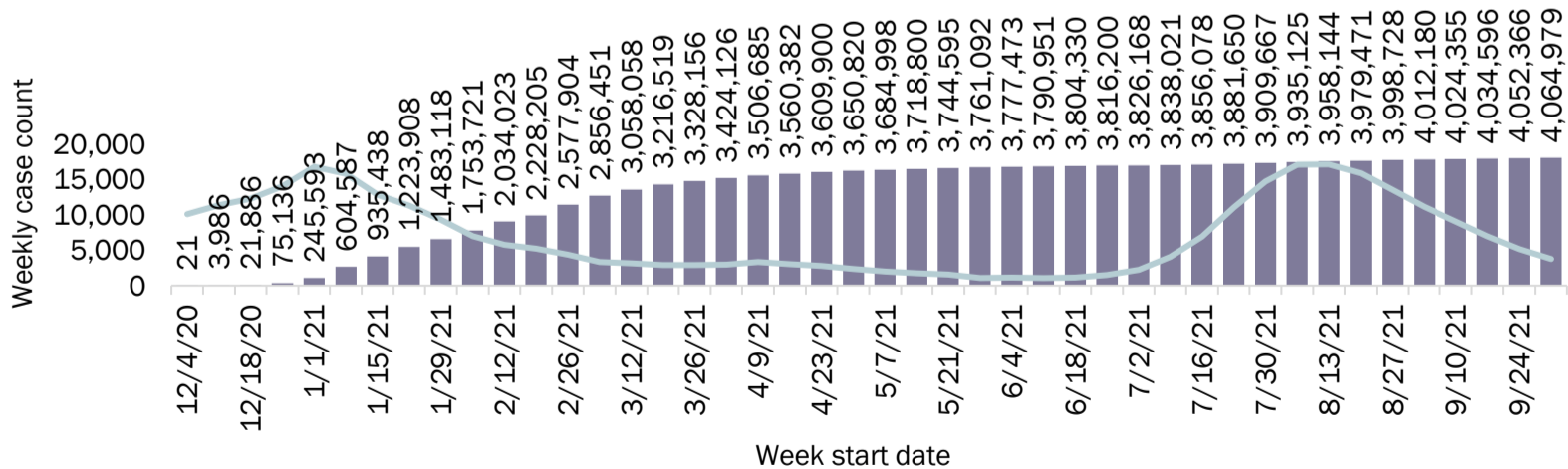
Ages 50 to 59 years



Ages 60 to 64 years



Ages 65+ years



COVID-19 Weekly Situation Report: County Overview

Previous week (October 1, 2021 - October 7, 2021)



| County | 2021 population | Cumulative (since March 1, 2020) | | | | Previous week (October 01, 2021 - October 07, 2021) | | | |
|----------------|-------------------|-------------------------------------|------------------------|------------------|-----------------|--|---------------|---------------------|------------------------------|
| | | People vaccinated | Percent 12+ vaccinated | Cases | Case positivity | People vaccinated | Cases | New case positivity | Cases per 100,000 population |
| Florida | 21,975,117 | 13,718,956 | 72% | 3,601,755 | 21.2% | 72,281 | 25,792 | 4.8% | 117.4 |
| Alachua | 272,746 | 164,924 | 69% | 38,858 | 16.8% | 566 | 264 | 3.4% | 96.8 |
| Baker | 28,864 | 10,760 | 44% | 5,948 | 29.5% | 45 | 23 | 6.0% | 79.7 |
| Bay | 177,856 | 83,696 | 55% | 31,453 | 26.5% | 520 | 181 | 6.7% | 101.8 |
| Bradford | 28,906 | 12,199 | 48% | 5,303 | 31.0% | 61 | 25 | 7.7% | 86.5 |
| Brevard | 611,202 | 363,831 | 67% | 79,757 | 20.1% | 1,431 | 509 | 3.8% | 83.3 |
| Broward | 1,965,657 | 1,380,409 | 82% | 352,257 | 18.4% | 7,636 | 2,526 | 4.3% | 128.5 |
| Calhoun | 15,008 | 5,096 | 39% | 2,991 | 30.3% | 20 | 21 | 10.0% | 139.9 |
| Charlotte | 188,061 | 126,793 | 73% | 22,792 | 20.3% | 356 | 290 | 8.1% | 154.2 |
| Citrus | 151,314 | 81,801 | 60% | 20,166 | 24.7% | 284 | 154 | 5.3% | 101.8 |
| Clay | 223,483 | 106,693 | 56% | 33,480 | 24.5% | 675 | 276 | 8.4% | 123.5 |
| Collier | 393,793 | 265,382 | 76% | 56,121 | 21.1% | 1,024 | 396 | 5.2% | 100.6 |
| Columbia | 71,288 | 28,875 | 47% | 14,775 | 32.5% | 162 | 76 | 6.0% | 106.6 |
| Dade | 2,918,507 | 2,323,456 | 92% | 665,202 | 20.7% | 15,191 | 3,816 | 2.9% | 130.8 |
| Desoto | 36,613 | 18,253 | 57% | 6,816 | 27.7% | 108 | 47 | 8.7% | 128.4 |
| Dixie | 16,738 | 6,103 | 41% | 2,918 | 28.4% | 29 | 42 | 16.9% | 250.9 |
| Duval | 1,002,075 | 530,237 | 63% | 162,887 | 22.2% | 3,053 | 906 | 5.3% | 90.4 |
| Escambia | 327,107 | 151,135 | 54% | 53,064 | 23.2% | 946 | 331 | 7.8% | 101.2 |
| Flagler | 116,671 | 72,104 | 69% | 14,184 | 20.9% | 273 | 102 | 6.2% | 87.4 |
| Franklin | 12,295 | 5,858 | 53% | 2,212 | 25.0% | 18 | 10 | 6.8% | 81.3 |
| Gadsden | 46,481 | 25,753 | 65% | 8,557 | 24.5% | 116 | 60 | 6.6% | 129.1 |
| Gilchrist | 18,218 | 6,949 | 44% | 3,111 | 28.3% | 23 | 19 | 5.7% | 104.3 |
| Glades | 13,290 | 6,202 | 51% | 1,405 | 36.1% | 5 | 7 | 9.7% | 52.7 |
| Gulf | 14,829 | 6,833 | 52% | 2,955 | 25.7% | 22 | 8 | 3.8% | 53.9 |
| Hamilton | 14,648 | 4,871 | 38% | 2,686 | 26.8% | 28 | 14 | 6.6% | 95.6 |
| Hardee | 27,585 | 11,045 | 48% | 6,003 | 32.2% | 72 | 61 | 12.8% | 221.1 |
| Hendry | 40,936 | 19,428 | 58% | 7,888 | 30.0% | 99 | 31 | 4.4% | 75.7 |
| Hernando | 195,123 | 102,982 | 60% | 28,203 | 24.9% | 515 | 188 | 5.8% | 96.3 |
| Highlands | 105,105 | 58,387 | 62% | 15,716 | 25.5% | 192 | 161 | 9.9% | 153.2 |
| Hillsborough | 1,508,560 | 857,857 | 67% | 237,669 | 22.7% | 5,694 | 1,916 | 6.1% | 127.0 |

COVID-19 Weekly Situation Report: County Overview

Previous week (October 1, 2021 - October 7, 2021)



| County | 2021 population | Cumulative (since March 1, 2020) | | | | Previous week (October 01, 2021 - October 07, 2021) | | | |
|--------------|-----------------|-------------------------------------|------------------------|---------|-----------------|--|-------|---------------------|------------------------------|
| | | People vaccinated | Percent 12+ vaccinated | Cases | Case positivity | People vaccinated | Cases | New case positivity | Cases per 100,000 population |
| Holmes | 20,211 | 5,630 | 32% | 3,779 | 32.8% | 22 | 26 | 9.1% | 128.6 |
| Indian River | 160,707 | 108,643 | 75% | 21,956 | 20.3% | 386 | 155 | 5.4% | 96.4 |
| Jackson | 47,261 | 18,793 | 45% | 10,002 | 28.5% | 92 | 95 | 9.4% | 201.0 |
| Jefferson | 14,887 | 7,401 | 56% | 2,435 | 25.4% | 22 | 16 | 6.3% | 107.5 |
| Lafayette | 8,799 | 3,545 | 46% | 2,175 | 44.5% | 7 | 10 | 9.1% | 113.6 |
| Lake | 377,680 | 226,411 | 68% | 53,476 | 21.0% | 1,170 | 549 | 8.0% | 145.4 |
| Lee | 773,456 | 467,183 | 68% | 123,425 | 23.3% | 1,777 | 849 | 5.6% | 109.8 |
| Leon | 303,541 | 160,888 | 60% | 49,917 | 21.8% | 672 | 354 | 4.6% | 116.6 |
| Levy | 41,859 | 19,513 | 54% | 6,889 | 28.8% | 105 | 41 | 6.4% | 97.9 |
| Liberty | 8,837 | 2,965 | 38% | 1,802 | 28.2% | 9 | 15 | 16.9% | 169.7 |
| Madison | 19,299 | 8,211 | 48% | 3,553 | 28.4% | 37 | 24 | 6.6% | 124.4 |
| Manatee | 405,480 | 242,332 | 68% | 64,023 | 20.9% | 1,135 | 487 | 5.8% | 120.1 |
| Marion | 372,469 | 204,448 | 62% | 56,016 | 25.9% | 928 | 427 | 6.9% | 114.6 |
| Martin | 162,810 | 99,388 | 68% | 19,847 | 18.4% | 320 | 194 | 6.9% | 119.2 |
| Monroe | 76,335 | 55,200 | 81% | 10,337 | 16.5% | 264 | 78 | 5.9% | 102.2 |
| Nassau | 89,151 | 49,053 | 63% | 14,867 | 24.5% | 219 | 66 | 4.7% | 74.0 |
| Okaloosa | 206,418 | 97,730 | 56% | 34,001 | 28.0% | 698 | 238 | 8.1% | 115.3 |
| Okeechobee | 42,449 | 18,137 | 50% | 7,357 | 28.0% | 89 | 50 | 9.0% | 117.8 |
| Orange | 1,457,445 | 920,439 | 74% | 224,913 | 18.0% | 5,774 | 1,609 | 3.6% | 110.4 |
| Osceola | 401,594 | 268,462 | 79% | 70,591 | 20.2% | 1,976 | 516 | 5.6% | 128.5 |
| Palm Beach | 1,486,178 | 969,451 | 74% | 221,820 | 19.6% | 4,534 | 1,744 | 5.0% | 117.3 |
| Pasco | 549,517 | 315,144 | 66% | 78,245 | 23.9% | 1,457 | 627 | 6.1% | 114.1 |
| Pinellas | 992,298 | 597,077 | 67% | 132,651 | 20.7% | 2,719 | 1,078 | 5.2% | 108.6 |
| Polk | 719,665 | 397,835 | 65% | 126,806 | 26.2% | 2,278 | 1,077 | 7.0% | 149.7 |
| Putnam | 73,398 | 31,655 | 50% | 12,628 | 29.3% | 182 | 85 | 7.1% | 115.8 |
| Santa Rosa | 186,998 | 88,061 | 55% | 31,999 | 29.5% | 515 | 200 | 7.0% | 107.0 |
| Sarasota | 441,179 | 305,454 | 76% | 54,595 | 18.1% | 875 | 372 | 4.0% | 84.3 |
| Seminole | 486,795 | 290,231 | 69% | 61,209 | 22.1% | 1,210 | 494 | 6.2% | 101.5 |
| St. Johns | 275,222 | 175,018 | 74% | 40,071 | 23.0% | 617 | 341 | 6.2% | 123.9 |
| St. Lucie | 322,154 | 191,716 | 68% | 47,161 | 24.4% | 931 | 397 | 7.8% | 123.2 |

COVID-19 Weekly Situation Report: County Overview

Previous week (October 1, 2021 - October 7, 2021)



| County | 2021 population | Cumulative (since March 1, 2020) | | | | Previous week (October 01, 2021 - October 07, 2021) | | | |
|------------|-----------------|-------------------------------------|------------------------|--------|-----------------|--|-------|---------------------|------------------------------|
| | | People vaccinated | Percent 12+ vaccinated | Cases | Case positivity | People vaccinated | Cases | New case positivity | Cases per 100,000 population |
| Sumter | 137,317 | 96,342 | 74% | 14,278 | 18.9% | 287 | 118 | 5.8% | 85.9 |
| Suwannee | 46,509 | 16,128 | 40% | 9,115 | 34.2% | 108 | 47 | 6.7% | 101.1 |
| Taylor | 22,762 | 9,072 | 46% | 4,541 | 30.7% | 25 | 45 | 9.2% | 197.7 |
| Union | 15,511 | 7,575 | 56% | 3,049 | 21.9% | 33 | 14 | 6.8% | 90.3 |
| Unknown | | 26,698 | | 1 | 0.0% | 65 | - | 0.0% | |
| Volusia | 552,328 | 317,387 | 65% | 74,234 | 23.0% | 1,309 | 753 | 9.0% | 136.3 |
| Wakulla | 33,815 | 15,916 | 54% | 6,326 | 26.5% | 51 | 34 | 5.6% | 100.5 |
| Walton | 74,427 | 37,078 | 58% | 11,768 | 24.3% | 182 | 76 | 6.7% | 102.1 |
| Washington | 25,397 | 8,834 | 40% | 4,520 | 30.1% | 37 | 31 | 7.0% | 122.1 |

COVID-19 Weekly Situation Report: Demographics Overview

Previous week (October 1, 2021 - October 7, 2021)



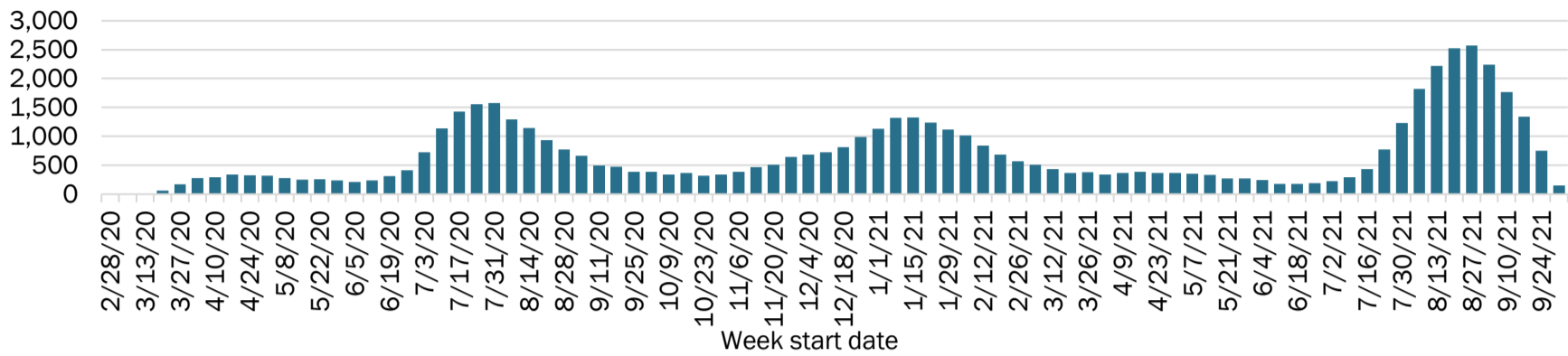
| Demographic | 2021 population | Cumulative (since March 1, 2020) | | | | Previous week (October 01, 2021 - October 07, 2021) | | | |
|--------------------|-------------------|-------------------------------------|------------------------|------------------|-----------------|--|---------------|---------------------|------------------------------|
| | | People vaccinated | Percent 12+ vaccinated | Cases | Case positivity | People vaccinated | Cases | New case positivity | Cases per 100,000 population |
| All ages | 21,975,117 | 13,718,956 | 72% | 3,601,755 | 21.2% | 72,281 | 25,792 | 4.8% | 117.4 |
| <12 | 2,856,074 | | | 322,772 | 18.5% | | 4,140 | 6.6% | 145.0 |
| 12-19 | 1,972,084 | 1,079,179 | 55% | 366,942 | 23.7% | 9,109 | 2,580 | 5.9% | 130.8 |
| 20-29 | 2,744,987 | 1,467,497 | 53% | 610,079 | 24.6% | 13,192 | 3,223 | 4.5% | 117.4 |
| 30-39 | 2,784,698 | 1,750,543 | 63% | 610,853 | 24.1% | 13,568 | 4,057 | 4.8% | 145.7 |
| 40-49 | 2,669,253 | 1,902,505 | 71% | 535,297 | 23.4% | 10,539 | 3,541 | 4.7% | 132.7 |
| 50-59 | 2,925,172 | 2,250,328 | 77% | 495,517 | 21.0% | 9,355 | 3,104 | 4.3% | 106.1 |
| 60-64 | 1,438,783 | 1,203,919 | 84% | 194,645 | 18.2% | 3,905 | 1,377 | 4.1% | 95.7 |
| 65+ | 4,584,066 | 4,064,979 | 89% | 463,998 | 16.0% | 12,613 | 3,764 | 4.0% | 82.1 |
| Unknown | | | | 1,652 | 7.4% | | 6 | 13.3% | |
| All genders | 21,975,117 | 13,718,956 | 72% | 3,601,755 | 21.2% | 72,281 | 25,792 | 4.8% | 117.4 |
| Female | 11,235,512 | 7,354,773 | 75% | 1,878,706 | 21.0% | 37,566 | 13,158 | 4.5% | 117.1 |
| Male | 10,739,605 | 6,335,772 | 68% | 1,660,429 | 21.8% | 34,562 | 11,501 | 5.0% | 107.1 |
| Unknown | | 28,411 | | 62,620 | 15.8% | 153 | 1,133 | 7.7% | |
| White | 16,975,231 | 8,352,789 | 49% | 2,083,226 | 25.0% | 34,351 | 15,346 | 5.4% | 90.4 |
| Hispanic | 5,352,032 | 2,106,669 | 39% | 716,324 | 30.9% | 13,442 | 3,930 | 5.4% | 73.4 |
| Non-Hispanic | 11,623,199 | 4,568,637 | 39% | 1,233,623 | 24.9% | 13,992 | 10,337 | 5.5% | 88.9 |
| Unknown | | 1,677,483 | | 133,279 | 12.5% | 6,917 | 1,079 | 5.3% | |
| Black | 3,725,308 | 1,217,993 | 33% | 517,663 | 26.9% | 10,846 | 3,229 | 4.7% | 86.7 |
| Hispanic | 307,860 | 86,169 | 28% | 29,741 | 29.7% | 818 | 160 | 4.9% | 52.0 |
| Non-Hispanic | 3,417,448 | 908,716 | 27% | 457,023 | 28.8% | 7,361 | 2,888 | 4.7% | 84.5 |
| Unknown | | 223,108 | | 30,899 | 12.9% | 2,667 | 181 | 3.9% | |
| Other | 1,274,578 | 2,240,980 | 176% | 539,641 | 22.3% | 15,492 | 3,309 | 3.8% | 259.6 |
| Hispanic | 209,716 | 764,715 | 365% | 263,982 | 28.5% | 6,070 | 1,370 | 5.0% | 653.3 |
| Non-Hispanic | 1,064,862 | 869,298 | 82% | 202,156 | 22.1% | 3,091 | 1,408 | 3.3% | 132.2 |
| Unknown | | 606,967 | | 73,503 | 12.7% | 6,331 | 531 | 2.9% | |
| Unknown | | 1,907,194 | | 461,225 | 10.8% | 11,592 | 3,908 | 4.0% | |
| Hispanic | | 126,744 | | 80,806 | 13.9% | 627 | 467 | 5.8% | |
| Non-Hispanic | | 126,891 | | 27,957 | 10.1% | 386 | 211 | 1.1% | |
| Unknown | | 1,653,559 | | 352,462 | 10.3% | 10,579 | 3,230 | 4.6% | |
| Florida | 21,975,117 | 13,718,956 | 72% | 3,601,755 | 21.2% | 72,281 | 25,792 | 4.8% | 117.4 |

COVID-19 Weekly Situation Report: Death Overview

Previous week (October 1, 2021 - October 7, 2021)



2021 deaths by week of death (56,667 deaths)



Summary of deaths by age group, gender, race, and ethnicity

| Age group | Deaths | Cases | Case fatality rate | Mortality per 100,000 population |
|----------------|---------------|------------------|--------------------|----------------------------------|
| Under 16 | 27 | 484,336 | 0.0% | 0.7 |
| 16-29 | 389 | 815,457 | 0.0% | 10.4 |
| 30-39 | 987 | 610,853 | 0.2% | 35.4 |
| 40-49 | 2,414 | 535,297 | 0.5% | 90.4 |
| 50-59 | 5,476 | 495,517 | 1.1% | 187.2 |
| 60-64 | 4,584 | 194,645 | 2.4% | 318.6 |
| 65+ | 42,790 | 463,998 | 9.2% | 933.5 |
| Unknown | 0 | 1,652 | 0.0% | |
| Florida | 56,667 | 3,601,755 | 1.6% | 257.9 |

| Race | Deaths | Cases | Case fatality rate | Mortality per 100,000 population |
|----------------|---------------|------------------|--------------------|----------------------------------|
| White | 41,001 | 2,083,226 | 2.0% | 241.5 |
| Black | 9,455 | 517,663 | 1.8% | 253.8 |
| Other | 4,640 | 539,641 | 0.9% | 364.0 |
| Unknown | 1,571 | 461,225 | 0.3% | |
| Florida | 56,667 | 3,601,755 | 1.6% | 257.9 |

| Gender | Deaths | Cases | Case fatality rate | Mortality per 100,000 population |
|----------------|---------------|------------------|--------------------|----------------------------------|
| Female | 24,902 | 1,878,706 | 1.3% | 221.6 |
| Male | 31,758 | 1,660,429 | 1.9% | 295.7 |
| Unknown | 7 | 62,620 | 0.0% | |
| Florida | 56,667 | 3,601,755 | 1.6% | 257.9 |

| Ethnicity | Deaths | Cases | Case fatality rate | Mortality per 100,000 population |
|----------------|---------------|------------------|--------------------|----------------------------------|
| Non-Hispanic | 40,853 | 1,920,759 | 2.1% | 253.7 |
| Hispanic | 12,206 | 1,090,853 | 1.1% | 208.0 |
| Unknown | 3,608 | 590,143 | 0.6% | |
| Florida | 56,667 | 3,601,755 | 1.6% | 257.9 |

COVID-19 Weekly Situation Report: Data Notes

Previous week (October 1, 2021 - October 7, 2021)



General notes

All data are provisional and subject to change. All data exclude persons known to reside outside Florida.

Population data are based on the 2021 population estimates from Florida CHARTS:
www.FLHealthCHARTS.com/FLQUERY_New/Population/Count.

Previous week runs from Friday through Thursday. Weekly reports are published on Fridays.

Case notes

Case and death counts include individuals who meet a standardized national surveillance case definition. For more information on Florida's surveillance case definitions, visit www.floridahealth.gov/diseases-and-conditions/disease-reporting-and-management/disease-reporting-and-surveillance/_documents/covid-19-case-definition.pdf.

Other race includes Asian, native Hawaiian/Pacific Islander, or other.

New case positivity

New case positivity, based on the number of people for whom the department received PCR or antigen laboratory results, is the number of people who test positive for the first time divided by all the people tested that week, excluding people who have previously tested positive.

Vaccination notes

Data in this summary pertain to COVID-19 vaccines approved by the U.S. Food and Drug Administration and have been issued an Emergency Use Authorization (Janssen COVID-19 Vaccine, Moderna COVID-19 Vaccine and Pfizer-BioNTech COVID-19 Vaccine). These data summarize the number of people who have received either their first dose or have completed the series for a COVID-19 vaccine. A person can only be counted in one category, first dose, series complete or additional dose. For persons receiving Moderna or Pfizer vaccines, once they receive their second dose, they are moved from the first dose column to the series completed column. Once a person receives their additional dose, they are moved from the series completed column to the additional dose column. Because of this, the total in each category may show a change from report to report not matching the totals from the previous week. Persons receiving Johnson & Johnson vaccines will always be counted in the series completed column. The age group table displays the current percentage of people in an age group who have received at least one dose of the Moderna or Pfizer doses or one Johnson & Johnson dose. The total line is the current percentage of the eligible population (ages 12+).

First dose: current number of people who have only received their first dose of the Moderna or Pfizer vaccine.

Series complete: current number of people who have received both Moderna or Pfizer vaccine doses or one Johnson & Johnson dose and are considered fully immunized.

Additional dose: current number of people who have received an additional dose of Pfizer-BioNTech COVID-19 vaccine or Moderna COVID-19 vaccine. This dose is recommended for persons with moderately or severely compromised immune systems.