

COVID-19: summary of persons being monitored, persons tested, and cases

Data through Aug 8, 2020 verified as of Aug 9, 2020 at 09:25 AM

Data in this report are provisional and subject to change.

Monitored persons: people the Florida Department of Health was notified of for possible monitoring because they are a contact of a case, traveled from China, or were identified by the Centers for Disease Control and Prevention (CDC) as a part of a airline/ship contact investigation	
Total reports	161,317
Total persons of high, medium, or unknown risk	157,645
High/medium/unknown risk still being monitored	13,653

Persons tested: includes PCR and antigen test results received by the Department of Health from the state public health laboratory (BPHL), as well as commercial and hospital laboratories	
Total tested	3,991,826
Positive	532,806
Negative	3,452,857
Inconclusive	6,163
Awaiting testing	3,353

Cases: people with positive PCR or antigen test result	
Total cases	532,806
Florida residents	527,036
Non-Florida residents	5,770
Type of testing	
Florida residents	527,036
Positive by BPHL/CDC	18,190
Positive by commercial/hospital lab	508,846
Non-Florida residents	5,770
Positive by BPHL/CDC	211
Positive by commercial/hospital lab	5,559
Characteristics	
Florida residents hospitalized	30,505
Florida resident deaths	8,186
Change in deaths since previous report	+77
Non-Florida resident deaths	129
Hospitalized counts include anyone who was hospitalized at some point during their illness. It does not reflect the number of people currently hospitalized.	
More information on deaths identified through death certificate data is available on the National Center for Health Statistics website at www.cdc.gov/nchs/nvss/vsrr/COVID19/index.htm .	
Risk factors for Florida residents	
Traveled	3,998
Contact with a known case	154,373
Traveled and contact with a known case	4,077
Neither	364,588
No travel and no contact	56,343
Travel is unknown	244,246
Contact is unknown	104,233
Contact is pending	191,882
Travel can be unknown and contact can be unknown or pending for the same case, these numbers will sum to more than the "neither" total.	

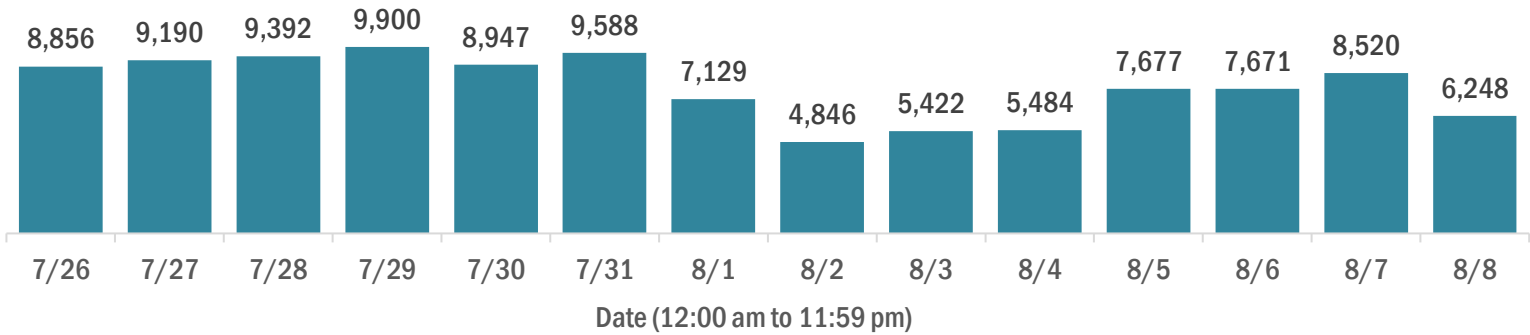
COVID-19: cases and laboratory testing over time

Data through Aug 8, 2020 verified as of Aug 9, 2020 at 09:25 AM

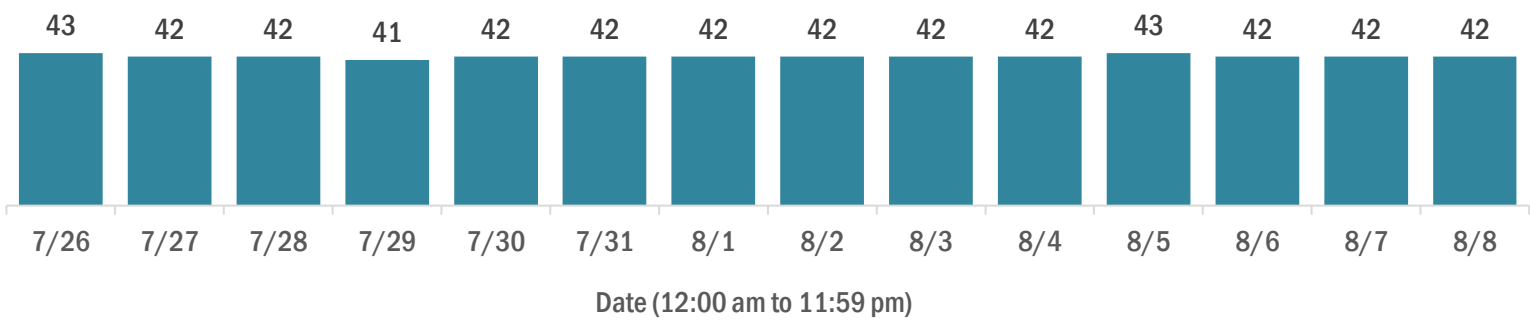
Data in this report are provisional and subject to change.

Cases in Florida residents per day for the past 2 weeks

Number of cases per day



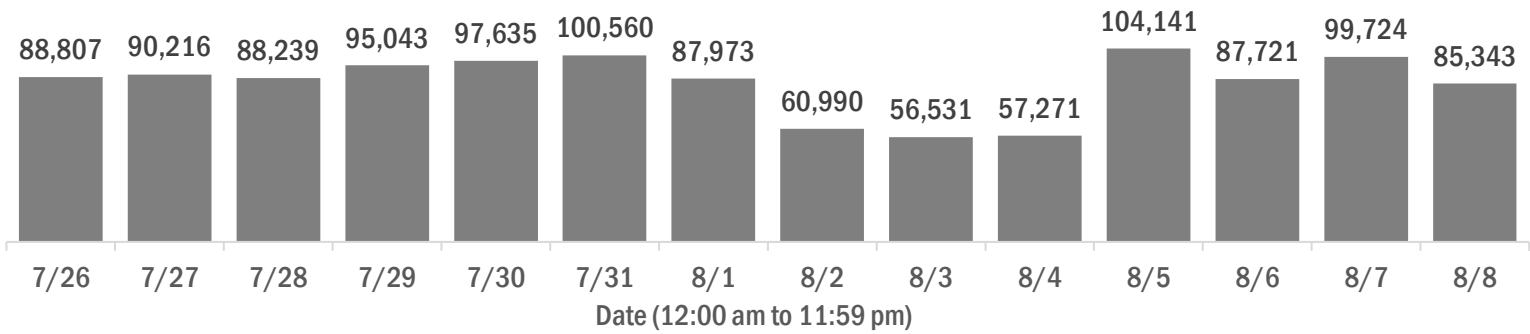
Median age of cases by day



Laboratory testing for Florida residents and non-Florida residents over the past 2 weeks

Number of people tested per day

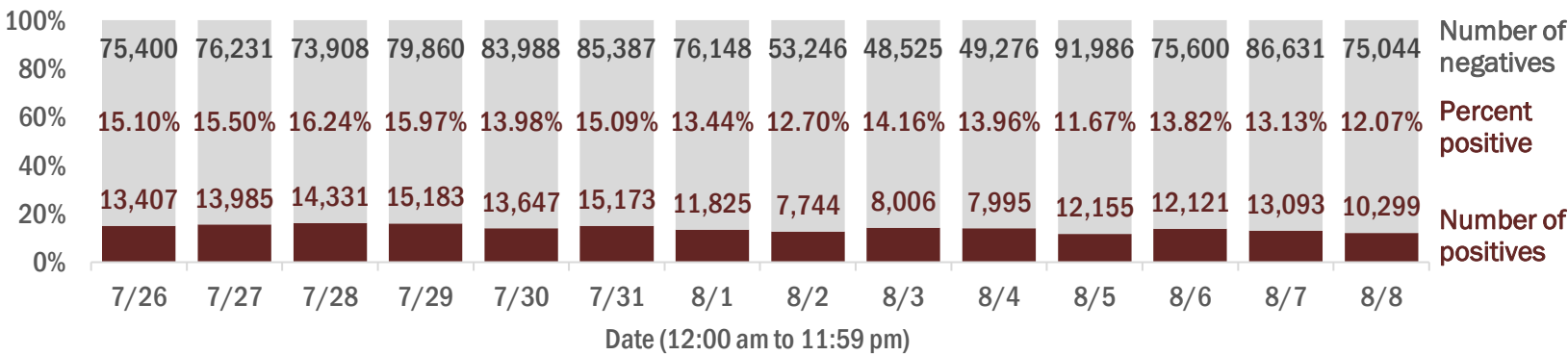
These counts include the number of people for whom the department received PCR or antigen laboratory results by day. People tested on multiple days will be included for each day a new result was received. A person is only counted once for each day they are tested, regardless of whether multiple specimens are tested or multiple results are received.



Number and percent of positive labs

The percent of positive results ranged from 11.67% to 16.24% over the past 2 weeks and was 12.07% yesterday.

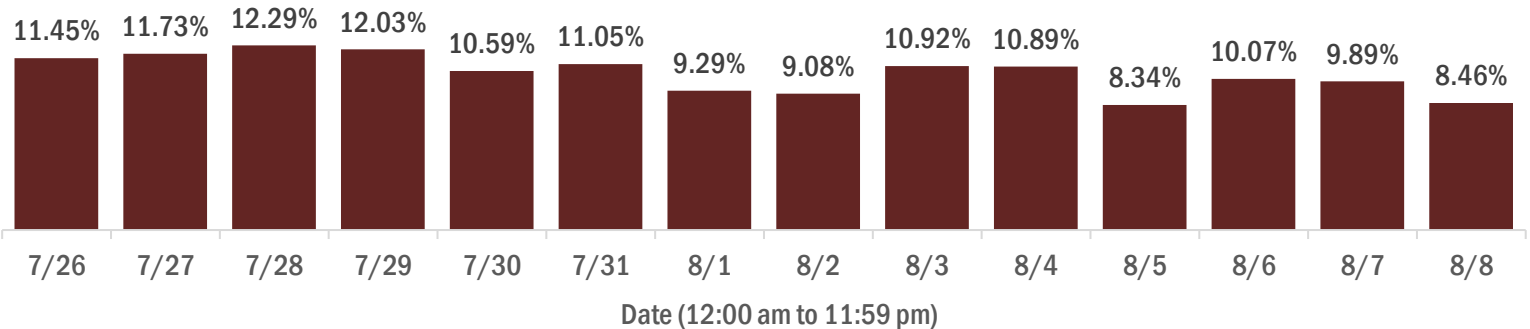
These counts include the number of people for whom the department received PCR or antigen laboratory results by day. People tested on multiple days will be included for each day a new result was received. A person is only counted once for each day they are tested, regardless of whether multiple specimens are tested or multiple results are received. If a person has a positive specimen and a negative specimen in the same day, only the positive result is counted.



Percent positivity for new cases

The percent of positive results ranged from 8.34% to 12.29% over the past 2 weeks and was 8.46% yesterday.

This percent is the number of people who test PCR- or antigen-positive for the first time divided by all the people tested that day, excluding people who have previously tested positive.



COVID-19: characteristics of 527,036 Florida resident cases

Data through Aug 8, 2020 verified as of Aug 9, 2020 at 09:25 AM

Data in this report are provisional and subject to change.

Age group	Cases		Hospitalizations		Deaths	
0-4 years	8,882	<div></div> 2%	185	<div></div> 1%	0	0%
5-14 years	20,832	<div></div> 4%	153	<div></div> 1%	3	0%
15-24 years	79,584	<div></div> 15%	764	<div></div> 3%	21	0%
25-34 years	101,545	<div></div> 19%	1,828	<div></div> 6%	55	1%
35-44 years	87,023	<div></div> 17%	2,722	<div></div> 9%	172	2%
45-54 years	84,436	<div></div> 16%	3,983	<div></div> 13%	352	4%
55-64 years	68,341	<div></div> 13%	5,393	<div></div> 18%	849	10%
65-74 years	39,427	<div></div> 7%	5,923	<div></div> 19%	1,668	20%
75-84 years	22,522	<div></div> 4%	5,476	<div></div> 18%	2,350	29%
85+ years	13,075	<div></div> 2%	4,076	<div></div> 13%	2,716	33%
Unknown	1,369	<div></div> 0%	2	<div></div> 0%	0	0%
Total	527,036		30,505		8,186	

Gender	Cases	
Female	269,296	<div></div> 51%
Male	253,805	<div></div> 48%
Unknown	3,935	<div></div> 1%
Total	527,036	

Ethnicity	Cases		Hospitalizations		Deaths	
Hispanic	140,521	<div></div> 27%	9,526	<div></div> 31%	2,044	25%
Non-Hispanic	183,156	<div></div> 35%	18,943	<div></div> 62%	5,293	65%
Unknown	203,359	<div></div> 39%	2,036	<div></div> 7%	849	10%
Total	527,036		30,505		8,186	

Race and ethnicity	Cases		Hospitalizations		Deaths	
White	207,475	<div></div> 39%	18,211	<div></div> 60%	5,446	67%
Hispanic	91,927	<div></div> 17%	6,809	<div></div> 22%	1,598	20%
Non-Hispanic	96,516	<div></div> 18%	10,663	<div></div> 35%	3,497	43%
Unknown	19,032	<div></div> 4%	739	<div></div> 2%	351	4%
Black	79,562	<div></div> 15%	7,503	<div></div> 25%	1,639	20%
Hispanic	3,633	<div></div> 1%	323	<div></div> 1%	54	1%
Non-Hispanic	66,267	<div></div> 13%	6,936	<div></div> 23%	1,508	18%
Unknown	9,662	<div></div> 2%	244	<div></div> 1%	77	1%
Other race	60,460	<div></div> 11%	3,612	<div></div> 12%	670	8%
Hispanic	29,987	<div></div> 6%	2,143	<div></div> 7%	328	4%
Non-Hispanic	16,974	<div></div> 3%	1,247	<div></div> 4%	258	3%
Unknown	13,499	<div></div> 3%	222	<div></div> 1%	84	1%
Unknown race	179,539	<div></div> 34%	1,179	<div></div> 4%	431	5%
Hispanic	14,974	<div></div> 3%	251	<div></div> 1%	64	1%
Non-Hispanic	3,399	<div></div> 1%	97	<div></div> 0%	30	0%
Unknown	161,166	<div></div> 31%	831	<div></div> 3%	337	4%
Total	527,036		30,505		8,186	

Hospitalization counts include anyone who was hospitalized at some point during their illness. It does not reflect the number of people currently hospitalized. **Other race** includes any person with a race of American Indian/Alaskan native, Asian, native Hawaiian/Pacific Islander, or other.

COVID-19: deaths in Florida residents and staff of long-term care facilities

Data through Aug 8, 2020 verified as of Aug 9, 2020 at 09:25 AM

Data in this report are provisional and subject to change.

For current cases in residents or staff of long-term care facilities, please visit: <https://floridahealthcovid19.gov/>

County	Deaths		County	Deaths		County	Deaths	
Dade	631	<div><div></div></div> 18%	Marion	30	<div><div></div></div> 1%	Jefferson	4	<div><div></div></div> 0%
Palm Beach	377	<div><div></div></div> 11%	Suwannee	29	<div><div></div></div> 1%	Madison	4	<div><div></div></div> 0%
Pinellas	342	<div><div></div></div> 10%	Osceola	28	<div><div></div></div> 1%	Okeechobee	4	<div><div></div></div> 0%
Broward	243	<div><div></div></div> 7%	Indian River	27	<div><div></div></div> 1%	Baker	3	<div><div></div></div> 0%
Hillsborough	188	<div><div></div></div> 5%	Hernando	25	<div><div></div></div> 1%	Bradford	2	<div><div></div></div> 0%
Lee	184	<div><div></div></div> 5%	Okaloosa	22	<div><div></div></div> 1%	Gilchrist	2	<div><div></div></div> 0%
Polk	165	<div><div></div></div> 5%	Hendry	19	<div><div></div></div> 1%	Hardee	2	<div><div></div></div> 0%
Manatee	105	<div><div></div></div> 3%	Lake	16	<div><div></div></div> 0%	Nassau	2	<div><div></div></div> 0%
Brevard	89	<div><div></div></div> 3%	Washington	12	<div><div></div></div> 0%	Desoto	1	<div><div></div></div> 0%
Duval	84	<div><div></div></div> 2%	Alachua	11	<div><div></div></div> 0%	Flagler	1	<div><div></div></div> 0%
Sarasota	83	<div><div></div></div> 2%	Putnam	11	<div><div></div></div> 0%	Holmes	1	<div><div></div></div> 0%
Seminole	81	<div><div></div></div> 2%	Walton	11	<div><div></div></div> 0%	Levy	1	<div><div></div></div> 0%
St. Lucie	81	<div><div></div></div> 2%	Bay	10	<div><div></div></div> 0%	Monroe	1	<div><div></div></div> 0%
Volusia	76	<div><div></div></div> 2%	Leon	10	<div><div></div></div> 0%	Taylor	1	<div><div></div></div> 0%
Escambia	66	<div><div></div></div> 2%	St. Johns	10	<div><div></div></div> 0%	Total	3,493	
Pasco	64	<div><div></div></div> 2%	Citrus	9	<div><div></div></div> 0%			
Collier	60	<div><div></div></div> 2%	Sumter	9	<div><div></div></div> 0%			
Martin	56	<div><div></div></div> 2%	Gadsden	8	<div><div></div></div> 0%			
Charlotte	53	<div><div></div></div> 2%	Santa Rosa	7	<div><div></div></div> 0%			
Orange	52	<div><div></div></div> 1%	Calhoun	6	<div><div></div></div> 0%			
Jackson	33	<div><div></div></div> 1%	Columbia	5	<div><div></div></div> 0%			
Clay	31	<div><div></div></div> 1%	Highlands	5	<div><div></div></div> 0%			

Note: cases are summarized by the county of usual residence. Residents and staff may be cases associated with facilities that are not in their county of usual residence, resulting in cases being included below for counties that do not have facilities with known cases.

COVID-19: characteristics of 532,806 cases

Data through Aug 8, 2020 verified as of Aug 9, 2020 at 09:25 AM

Data in this report are provisional and subject to change.

Tables below include cases in Florida residents and non-Florida residents.

All 67 Florida counties have cases:

County	FL resident cases		Non-FL resident cases	Total cases	FL resident deaths	FL death rate
Dade	131,553	<div><div></div></div> 25%	908	132,461	1,865	1.4%
Broward	61,745	<div><div></div></div> 12%	523	62,268	803	1.3%
Palm Beach	36,634	<div><div></div></div> 7%	386	37,020	931	2.5%
Hillsborough	32,452	<div><div></div></div> 6%	135	32,587	388	1.2%
Orange	31,319	<div><div></div></div> 6%	400	31,719	298	1.0%
Duval	23,197	<div><div></div></div> 4%	240	23,437	188	0.8%
Pinellas	17,755	<div><div></div></div> 3%	124	17,879	500	2.8%
Lee	16,244	<div><div></div></div> 3%	285	16,529	334	2.1%
Polk	14,256	<div><div></div></div> 3%	45	14,301	312	2.2%
Collier	10,193	<div><div></div></div> 2%	141	10,334	136	1.3%
Osceola	9,614	<div><div></div></div> 2%	82	9,696	104	1.1%
Escambia	8,615	<div><div></div></div> 2%	893	9,508	120	1.4%
Manatee	9,193	<div><div></div></div> 2%	95	9,288	192	2.1%
Volusia	7,820	<div><div></div></div> 1%	56	7,876	135	1.7%
Seminole	7,092	<div><div></div></div> 1%	26	7,118	119	1.7%
Pasco	7,043	<div><div></div></div> 1%	37	7,080	128	1.8%
Marion	6,497	<div><div></div></div> 1%	14	6,511	89	1.4%
Sarasota	6,179	<div><div></div></div> 1%	52	6,231	139	2.2%
Brevard	6,043	<div><div></div></div> 1%	21	6,064	151	2.5%
St. Lucie	5,749	<div><div></div></div> 1%	23	5,772	166	2.9%
Lake	5,131	<div><div></div></div> 1%	30	5,161	68	1.3%
Leon	4,859	<div><div></div></div> 1%	106	4,965	24	0.5%
Bay	4,373	<div><div></div></div> 1%	67	4,440	51	1.2%
Alachua	4,088	<div><div></div></div> 1%	54	4,142	26	0.6%
Santa Rosa	3,908	<div><div></div></div> 1%	31	3,939	37	0.9%
Martin	3,797	<div><div></div></div> 1%	28	3,825	94	2.5%
St. Johns	3,593	<div><div></div></div> 1%	42	3,635	34	0.9%
Okaloosa	3,472	<div><div></div></div> 1%	30	3,502	41	1.2%
Clay	3,274	<div><div></div></div> 1%	8	3,282	51	1.6%
Columbia	2,862	<div><div></div></div> 1%	11	2,873	15	0.5%
Indian River	2,508	<div><div></div></div> 0%	15	2,523	56	2.2%
Charlotte	2,231	<div><div></div></div> 0%	7	2,238	91	4.1%
Hernando	2,008	<div><div></div></div> 0%	14	2,022	47	2.3%
Gadsden	1,876	<div><div></div></div> 0%	8	1,884	21	1.1%
Jackson	1,806	<div><div></div></div> 0%	15	1,821	38	2.1%

County	FL resident cases		Non-FL resident cases	Total cases	FL resident deaths	FL death rate
Hendry	1,761	0%	1	1,762	38	2.2%
Citrus	1,535	0%	4	1,539	36	2.3%
Monroe	1,500	0%	26	1,526	13	0.9%
Putnam	1,507	0%	1	1,508	26	1.7%
Suwannee	1,437	0%	17	1,454	43	3.0%
Highlands	1,431	0%	4	1,435	37	2.6%
Walton	1,289	0%	119	1,408	15	1.2%
Desoto	1,348	0%	3	1,351	16	1.2%
Sumter	1,295	0%	8	1,303	41	3.2%
Nassau	1,162	0%	71	1,233	11	0.9%
Flagler	1,060	0%	10	1,070	13	1.2%
Okeechobee	1,035	0%	4	1,039	12	1.2%
Hardee	956	0%	7	963	7	0.7%
Taylor	958	0%	3	961	4	0.4%
Baker	907	0%	0	907	4	0.4%
Washington	857	0%	10	867	14	1.6%
Madison	688	0%	12	700	8	1.2%
Unknown	220	0%	475	695	0	0.0%
Wakulla	686	0%	6	692	4	0.6%
Levy	680	0%	4	684	4	0.6%
Gulf	639	0%	9	648	2	0.3%
Hamilton	613	0%	5	618	4	0.7%
Dixie	547	0%	0	547	4	0.7%
Holmes	494	0%	11	505	2	0.4%
Bradford	494	0%	0	494	4	0.8%
Calhoun	475	0%	0	475	7	1.5%
Jefferson	448	0%	5	453	5	1.1%
Franklin	416	0%	2	418	2	0.5%
Glades	401	0%	0	401	3	0.7%
Liberty	400	0%	0	400	6	1.5%
Gilchrist	363	0%	0	363	3	0.8%
Union	310	0%	0	310	5	1.6%
Lafayette	145	0%	1	146	1	0.7%
Total	527,036		5,770	532,806	8,186	1.6%

COVID-19: characteristics of 527,036 Florida resident cases

Data through Aug 8, 2020 verified as of Aug 9, 2020 at 09:25 AM

Data in this report are provisional and subject to change.

The table below includes the cities and counties of residence for cases in Florida residents based on the patient's ZIP Code. Note that city is not always received as part of the initial notification and may be missing while the case is being investigated.

City and county	Cases
Miami, Dade	80,057
Orlando, Orange	23,924
Jacksonville, Duval	21,627
Tampa, Hillsborough	19,679
Hialeah, Dade	19,423
Fort Lauderdale, Broward	13,817
Hollywood, Broward	12,023
West Palm Beach, Palm Beach	9,234
Homestead, Dade	8,731
Kissimmee, Osceola	7,786
Saint Petersburg, Pinellas	7,386
Naples, Collier	7,382
Pompano Beach, Broward	7,300
Pensacola, Escambia	7,003
Fort Myers, Lee	6,704
Bradenton, Manatee	6,328
Ocala, Marion	5,165
Lake Worth, Palm Beach	5,104
Boca Raton, Palm Beach	4,983
Tallahassee, Leon	4,743
Sarasota, Sarasota	4,576
Lakeland, Polk	4,426
Miramar, Broward	3,922
Cape Coral, Lee	3,779
Clearwater, Pinellas	3,518
Port Saint Lucie, St. Lucie	3,408
Miami Beach, Dade	3,407
Miami Gardens, Dade	3,391
Gainesville, Alachua	3,324
Lehigh Acres, Lee	3,305
Boynton Beach, Palm Beach	3,275
Panama City, Bay	2,849
Winter Haven, Polk	2,847
Lake City, Columbia	2,738
Coral Springs, Broward	2,688
Delray Beach, Palm Beach	2,513
Opa Locka, Dade	2,295
Davie, Broward	2,212
Milton, Santa Rosa	2,190
Sunrise, Broward	2,170
Doral, Dade	2,143
Brandon, Hillsborough	2,140
Immokalee, Collier	2,135
Fort Pierce, St. Lucie	2,089
Riverview, Hillsborough	2,048
Plant City, Hillsborough	2,003
Apopka, Orange	1,975
Saint Augustine, St. Johns	1,880
Missing, Broward	1,876
Stuart, Martin	1,844
North Miami Beach, Dade	1,838
Largo, Pinellas	1,821
Melbourne, Brevard	1,804
Vero Beach, Indian River	1,757
Deerfield Beach, Broward	1,752
Daytona Beach, Volusia	1,731
Tamarac, Broward	1,717
Sanford, Seminole	1,711
Plantation, Broward	1,685
Jupiter, Palm Beach	1,678

COVID-19: characteristics of 527,036 Florida resident cases

Data through Aug 8, 2020 verified as of Aug 9, 2020 at 09:25 AM

Data in this report are provisional and subject to change.

The table below includes the cities and counties of residence for cases in Florida residents based on the patient's ZIP Code. Note that city is not always received as part of the initial notification and may be missing while the case is being investigated.

City and county	Cases
New Port Richey, Pasco	1,606
Orange Park, Clay	1,568
Saint Cloud, Osceola	1,548
Deltona, Volusia	1,471
Lake Worth Beach, Palm Beach	1,431
Margate, Broward	1,386
Palmetto, Manatee	1,362
Clermont, Lake	1,350
Weston, Broward	1,294
Fort Walton Beach, Okaloosa	1,266
Palm Bay, Brevard	1,257
Deland, Volusia	1,251
North Lauderdale, Broward	1,238
Palm Beach Gardens, Palm Beach	1,199
Coconut Creek, Broward	1,196
Miami Lakes, Dade	1,188
Live Oak, Suwannee	1,186
Arcadia, Desoto	1,183
Hallandale, Broward	1,181
Winter Garden, Orange	1,179
Altamonte Springs, Seminole	1,177
Winter Park, Orange	1,164
Haines City, Polk	1,164
Davenport, Polk	1,144
Port Charlotte, Charlotte	1,112
Spring Hill, Hernando	1,101
Oviedo, Seminole	1,095
Ocoee, Orange	1,090
Bonita Springs, Lee	1,080
Coral Gables, Dade	1,074
Royal Palm Beach, Palm Beach	1,055
North Miami, Dade	1,015
Palm Harbor, Pinellas	997
Land O Lakes, Pasco	992
Quincy, Gadsden	992
Oakland Park, Broward	983
Okeechobee, Okeechobee	979
Wellington, Palm Beach	977
Wesley Chapel, Pasco	970
Pinellas Park, Pinellas	932
Indiantown, Martin	920
Ruskin, Hillsborough	914
Clewiston, Hendry	910
Missing, Dade	885
Perry, Taylor	883
Lutz, Hillsborough	872
Punta Gorda, Charlotte	869
Valrico, Hillsborough	866
Longwood, Seminole	858
Pembroke Pines, Broward	852
Florida City, Dade	839
Seminole, Pinellas	837
Belle Glade, Palm Beach	832
Missing, Palm Beach	807
Palm Coast, Flagler	780
Leesburg, Lake	777
Wimauma, Hillsborough	767
Palatka, Putnam	745
Windermere, Orange	728
Casselberry, Seminole	726
Bartow, Polk	717

COVID-19: characteristics of 527,036 Florida resident cases

Data through Aug 8, 2020 verified as of Aug 9, 2020 at 09:25 AM

Data in this report are provisional and subject to change.

The table below includes the cities and counties of residence for cases in Florida residents based on the patient's ZIP Code. Note that city is not always received as part of the initial notification and may be missing while the case is being investigated.

City and county	Cases
Key West, Monroe	716
Crestview, Okaloosa	708
Jacksonville Beach, Duval	704
Middleburg, Clay	701
North Port, Sarasota	694
Lynn Haven, Bay	692
Century, Escambia	690
Graceville, Jackson	690
Chipley, Washington	687
Ormond Beach, Volusia	678
Cocoa, Brevard	674
Brooksville, Hernando	673
Cantonment, Escambia	667
Kissimmee, Polk	646
Aventura, Dade	637
Auburndale, Polk	634
Lake Mary, Seminole	627
Sebring, Highlands	617
Tavares, Lake	612
Zephyrhills, Pasco	610
Dade City, Pasco	605
Hudson, Pasco	595
North Fort Myers, Lee	593
Crawfordville, Wakulla	583
Labelle, Hendry	579
Port Richey, Pasco	576
Gulf Breeze, Santa Rosa	575
Loxahatchee, Palm Beach	572
Panama City Beach, Bay	565
Winter Springs, Seminole	546
Port Orange, Volusia	536
Lake Wales, Polk	534
Tarpon Springs, Pinellas	531
Riviera Beach, Palm Beach	522
Maitland, Orange	516
Mulberry, Polk	515
Seffner, Hillsborough	514
Venice, Sarasota	509
Sanderson, Baker	500
Orange City, Volusia	491
Destin, Okaloosa	491
Marianna, Jackson	490
Cooper City, Broward	490
Saint Johns, St. Johns	487
Sarasota, Manatee	487
Carol City, Dade	486
Holiday, Pasco	474
Navarre, Santa Rosa	472
Ponte Vedra Beach, St. Johns	471
Avon Park, Highlands	461
South Bay, Palm Beach	458
Fernandina Beach, Nassau	454
Santa Rosa Beach, Walton	453
Missing, Collier	448
Defuniak Springs, Walton	442
Dunedin, Pinellas	436
Eustis, Lake	434
Wauchula, Hardee	433
The Villages, Sumter	428
Merritt Island, Brevard	427
Green Cove Springs, Clay	426

COVID-19: characteristics of 527,036 Florida resident cases

Data through Aug 8, 2020 verified as of Aug 9, 2020 at 09:25 AM

Data in this report are provisional and subject to change.

The table below includes the cities and counties of residence for cases in Florida residents based on the patient's ZIP Code. Note that city is not always received as part of the initial notification and may be missing while the case is being investigated.

City and county	Cases
Dania, Broward	425
Titusville, Brevard	419
Jasper, Hamilton	414
Pahokee, Palm Beach	411
Parrish, Manatee	408
Fleming Island, Clay	406
Dover, Hillsborough	405
Madison, Madison	403
Monticello, Jefferson	402
Gibsonton, Hillsborough	400
Starke, Bradford	394
South Miami, Dade	390
Palm City, Martin	390
Lantana, Palm Beach	386
Rockledge, Brevard	384
New Smyrna Beach, Volusia	377
Inverness, Citrus	377
Bonifay, Holmes	374
Odessa, Hillsborough	374
Moore Haven, Glades	373
Fellsmere, Indian River	370
Groveland, Lake	368
Estero, Lee	367
Havana, Gadsden	366
Pinecrest, Dade	365
Niceville, Okaloosa	364
Missing, Hillsborough	362
Wewahitchka, Gulf	362
Parkland, Broward	357
Key Biscayne, Dade	356
Missing, Duval	351
Mount Dora, Lake	346
Cross City, Dixie	338
Bristol, Liberty	330
Crescent City, Putnam	330
Lauderdale Lakes, Broward	326
Atlantic Beach, Duval	325
Blountstown, Calhoun	324
Carrabelle, Franklin	319
Debary, Volusia	319
Polk City, Polk	318
Oldsmar, Pinellas	311
Lauderhill, Broward	311
Pace, Santa Rosa	298
Palm Springs, Palm Beach	290
Hobe Sound, Martin	290
Missing, Orange	289
Lithia, Hillsborough	287
Sun City Center, Hillsborough	286
North Palm Beach, Palm Beach	285
Apollo Beach, Hillsborough	280
Missing, Pasco	275
Frostproof, Polk	269
South Miami Heights, Dade	268
Summerfield, Marion	263
Wilton Manors, Broward	260
Macclenny, Baker	257
Missing, Santa Rosa	256
Yulee, Nassau	254
Alachua, Alachua	250
Sebastian, Indian River	247

COVID-19: characteristics of 527,036 Florida resident cases

Data through Aug 8, 2020 verified as of Aug 9, 2020 at 09:25 AM

Data in this report are provisional and subject to change.

The table below includes the cities and counties of residence for cases in Florida residents based on the patient's ZIP Code. Note that city is not always received as part of the initial notification and may be missing while the case is being investigated.

City and county	Cases
Missing, St. Lucie	238
Ellenton, Manatee	238
Missing, Hendry	235
Fort Meade, Polk	234
Bowling Green, Hardee	233
Bushnell, Sumter	233
Missing, St. Johns	232
Ponte Vedra, St. Johns	231
Crossings, Dade	231
Missing, Polk	230
Safety Harbor, Pinellas	224
Bellevue, Marion	224
El Portal, Dade	221
Williston, Levy	220
Sneads, Jackson	220
Trenton, Gilchrist	218
Crystal River, Citrus	216
Chattahoochee, Gadsden	215
Lake Butler, Union	215
Cutler Ridge, Dade	214
Wildwood, Sumter	213
Everglades National Park, Dade	213
Lake Placid, Highlands	205
Key Largo, Monroe	200
Port Saint Joe, Gulf	199
Biscayne Park, Dade	199
Homosassa, Citrus	198
Chiefland, Levy	196
Palmetto Bay, Dade	196
Dunnellon, Marion	194
Jensen Beach, Martin	193
Mary Esther, Okaloosa	192
Callahan, Nassau	189
Lady Lake, Lake	187
Shalimar, Okaloosa	180
Missing, Marion	179
Missing, Citrus	179
Old Town, Dixie	178
Newberry, Alachua	178
Missing, Hardee	177
Mascotte, Lake	176
Edgewater, Volusia	173
Kendall, Dade	171
Missing, Volusia	170
Coconut Grove, Dade	168
Missing, Madison	167
Missing, Osceola	164
Jacksonville, St. Johns	164
Marathon, Monroe	164
Thonotosassa, Hillsborough	162
Freeport, Walton	160
Lake Alfred, Polk	158
Southwest Ranches, Broward	155
Lecanto, Citrus	154
Missing, Brevard	150
Minneola, Lake	148
Coral, Dade	148
Missing, Hernando	147
Pierson, Volusia	141
Satellite Beach, Brevard	141
Missing, Desoto	140

COVID-19: characteristics of 527,036 Florida resident cases

Data through Aug 8, 2020 verified as of Aug 9, 2020 at 09:25 AM

Data in this report are provisional and subject to change.

The table below includes the cities and counties of residence for cases in Florida residents based on the patient's ZIP Code. Note that city is not always received as part of the initial notification and may be missing while the case is being investigated.

City and county	Cases
Uleta, Dade	138
Myakka City, Manatee	136
Neptune Beach, Duval	136
Nokomis, Sarasota	134
Cocoa Beach, Brevard	134
Spring Hill, Pasco	134
Citra, Marion	134
Missing, Highlands	132
Sorrento, Lake	131
Marco Island, Collier	131
Missing, Seminole	131
Mayo, Lafayette	130
Bronson, Levy	130
Clearwater Beach, Pinellas	129
Midway, Gadsden	128
Jennings, Hamilton	128
Hilliard, Nassau	127
Missing, Martin	126
Beverly Hills, Citrus	126
Medley, Dade	125
Lake Park, Palm Beach	123
West Melbourne, Brevard	123
Missing, Indian River	122
Englewood, Charlotte	121
Tavernier, Monroe	119
Gulfport, Pinellas	119
Holly Hill, Volusia	119
Missing, Monroe	116
De Leon Springs, Volusia	115
Fort White, Columbia	111
Missing, Pinellas	111
Missing, Unknown	110
Bunnell, Flagler	109
Miramar Beach, Walton	109
Missing, Lee	109
Kenneth City, Pinellas	108
Bell, Gilchrist	105
Molino, Escambia	105
Missing, Nassau	103
Golden Beach, Dade	101
Palm Beach, Palm Beach	100
Jay, Santa Rosa	100
Fruitland Park, Lake	100
Zolfo Springs, Hardee	99
Alva, Lee	99
Indialantic, Brevard	98
High Springs, Alachua	98
Umatilla, Lake	96
Englewood, Sarasota	95
Hernando, Citrus	93
Gretna, Gadsden	90
Dunnellon, Citrus	89
Cottondale, Jackson	89
Flagler Beach, Flagler	88
East Palatka, Putnam	88
Sweetwater, Dade	87
Glen Saint Mary, Baker	87
Tequesta, Palm Beach	87
Trinity, Pasco	86
Missing, Clay	86
Missing, Sarasota	86

COVID-19: characteristics of 527,036 Florida resident cases

Data through Aug 8, 2020 verified as of Aug 9, 2020 at 09:25 AM

Data in this report are provisional and subject to change.

The table below includes the cities and counties of residence for cases in Florida residents based on the patient's ZIP Code. Note that city is not always received as part of the initial notification and may be missing while the case is being investigated.

City and county	Cases
Missing, Okaloosa	85
Oxford, Sumter	82
Montverde, Lake	80
Missing, Flagler	80
South Daytona, Volusia	80
Gotha, Orange	79
Missing, Jackson	79
Keystone Heights, Clay	78
Chuluota, Seminole	78
Reddick, Marion	77
Eagle Lake, Polk	77
Missing, Gulf	77
Greenwood, Jackson	76
Silver Springs, Marion	76
Rotunda West, Charlotte	76
Youngstown, Bay	75
Cape Canaveral, Brevard	75
Missing, Leon	75
Archer, Alachua	74
Missing, Lake	73
Weeki Wachee, Hernando	73
Geneva, Seminole	71
Osprey, Sarasota	70
Coleman, Sumter	69
Vernon, Washington	69
Fisher Island, Dade	69
Baker, Okaloosa	69
Mims, Brevard	69
Hawthorne, Alachua	69
White Springs, Hamilton	68
Lake Panasoffkee, Sumter	67
Hastings, St. Johns	67
Dundee, Polk	67
Altha, Calhoun	67
Branford, Suwannee	67
Interlachen, Putnam	66
Webster, Sumter	66
Avon Park, Polk	66
Fort Myers Beach, Lee	66
Ocklawaha, Marion	64
Southport, Bay	64
Missing, Levy	63
Melbourne Beach, Brevard	63
Zellwood, Orange	63
West Miami, Dade	62
Missing, Baker	62
O Brien, Suwannee	62
Missing, Washington	61
Missing, Manatee	61
Ave Maria, Collier	61
Satsuma, Putnam	61
Pomona Park, Putnam	61
Oakland, Orange	59
Missing, Escambia	59
Greenville, Madison	58
Missing, Wakulla	58
South Pasadena, Pinellas	57
Apalachicola, Franklin	57
Indian Rocks Beach, Pinellas	56
Raiford, Union	56
Missing, Gadsden	56

COVID-19: characteristics of 527,036 Florida resident cases

Data through Aug 8, 2020 verified as of Aug 9, 2020 at 09:25 AM

Data in this report are provisional and subject to change.

The table below includes the cities and counties of residence for cases in Florida residents based on the patient's ZIP Code. Note that city is not always received as part of the initial notification and may be missing while the case is being investigated.

City and county	Cases
Belle Isle, Orange	55
Islamorada, Monroe	54
Floral City, Citrus	53
Missing, Okeechobee	53
Missing, Calhoun	52
Grand Island, Lake	51
San Antonio, Pasco	50
Bal Harbour, Dade	50
Lakewood Ranch, Manatee	48
Seville, Volusia	48
Mcdavid, Escambia	48
Surfside, Dade	48
Missing, Sumter	47
Viera, Brevard	47
Indian Harbour Beach, Brevard	47
Missing, Walton	46
Grand Ridge, Jackson	46
Greenacres, Palm Beach	46
Lee, Madison	45
Lawtey, Bradford	45
Fountain, Bay	45
Poinciana, Polk	42
Elkton, St. Johns	42
Mcalpin, Suwannee	42
Missing, Holmes	42
Malone, Jackson	41
Alford, Jackson	40
Stock Island, Monroe	40
Wellborn, Suwannee	40
Sanibel, Lee	39
Atlantis, Palm Beach	39
Lake Hamilton, Polk	39
Morriston, Levy	38
Citrus Springs, Citrus	38
Westville, Holmes	38
Melrose, Putnam	37
Ponce De Leon, Holmes	36
Missing, Gilchrist	36
Center Hill, Sumter	36
Micanopy, Alachua	36
Celebration, Osceola	36
Christmas, Orange	35
Astatula, Lake	35
Hosford, Liberty	35
Malabar, Brevard	34
Summerland Key, Monroe	34
Weirsdale, Marion	34
Bay Harbor Islands, Dade	34
Valparaiso, Okaloosa	34
Welaka, Putnam	34
Anthony, Marion	34
Howey-In-The-Hills, Lake	34
Missing, Taylor	34
Inlet Beach, Walton	33
Babson Park, Polk	33
Princeton, Dade	32
Lauderdale By The Sea, Broward	32
Lake Helen, Volusia	32
Missing, Liberty	32
Juno Beach, Palm Beach	32
Belleair, Pinellas	32

COVID-19: characteristics of 527,036 Florida resident cases

Data through Aug 8, 2020 verified as of Aug 9, 2020 at 09:25 AM

Data in this report are provisional and subject to change.

The table below includes the cities and counties of residence for cases in Florida residents based on the patient's ZIP Code. Note that city is not always received as part of the initial notification and may be missing while the case is being investigated.

City and county	Cases
Cutler Bay, Dade	32
Laurel Hill, Okaloosa	32
Bryceville, Nassau	32
Missing, Bay	31
Bokeelia, Lee	31
Steinhatchee, Taylor	31
Osteen, Volusia	30
Florida State University, Leon	29
Madeira Beach, Pinellas	29
Missing, Jefferson	28
Greensboro, Gadsden	28
Hallandale Beach, Broward	28
San Mateo, Putnam	28
Fern Park, Seminole	28
Missing, Suwannee	28
Big Pine Key, Monroe	27
Missing, Bradford	27
Sumterville, Sumter	27
Mangonia Park, Palm Beach	27
Hypoluxo, Palm Beach	27
Lady Lake, Sumter	27
Singer Island, Palm Beach	27
Canal Point, Palm Beach	27
Unknown, Orange	26
Destin, Walton	26
The Villages, Lake	25
Yalaha, Lake	25
Naranja, Dade	25
Felda, Hendry	25
Eastpoint, Franklin	25
Patrick Air Force Base, Brevard	25
Caryville, Washington	25
Astor, Lake	24
Eglin Air Force Base, Okaloosa	24
Bradenton Beach, Manatee	23
Missing, Dixie	23
Belleair Beach, Pinellas	23
Ochopee, Collier	23
Missing, Charlotte	23
Florida Dept Of Corrections, Union	22
Odessa, Pasco	22
Saint James City, Lee	22
Haverhill, Palm Beach	22
Sunny Isles Beach, Dade	22
Holt, Okaloosa	22
Grant-Valkaria, Brevard	21
Longboat Key, Manatee	21
Campbellton, Jackson	21
Sopchoppy, Wakulla	21
Clarksville, Calhoun	21
Jupiter, Martin	21
Oak Hill, Volusia	20
Altoona, Lake	20
Kindred, Osceola	19
Temple Terrace, Hillsborough	19
Baldwin, Duval	19
Hialeah Gardens, Dade	19
Ponce Inlet, Volusia	19
Kissimmee, Orange	18
Fort Mccoy, Marion	18
Lamont, Jefferson	18

COVID-19: characteristics of 527,036 Florida resident cases

Data through Aug 8, 2020 verified as of Aug 9, 2020 at 09:25 AM

Data in this report are provisional and subject to change.

The table below includes the cities and counties of residence for cases in Florida residents based on the patient's ZIP Code. Note that city is not always received as part of the initial notification and may be missing while the case is being investigated.

City and county	Cases
Edgewood, Orange	18
Panacea, Wakulla	18
Miami Springs, Dade	18
Paisley, Lake	18
Crystal Beach, Pinellas	18
Callaway, Bay	18
Placida, Charlotte	18
Georgetown, Putnam	17
Missing, Union	17
Brooker, Bradford	16
Fruit Cove, St. Johns	16
Waverly, Polk	16
Waldo, Alachua	16
Pinetta, Madison	15
Tice, Lee	15
Alafaya, Orange	15
North Bay Village, Dade	15
Air Mail Facility, Dade	14
Miami Shores, Dade	14
Carrollwood, Hillsborough	14
Ona, Hardee	14
Inglis, Levy	14
Holmes Beach, Manatee	14
Missing, Franklin	14
Village Of Palmetto Bay, Dade	13
West Park, Broward	13
Hollister, Putnam	13
Walnut Hill, Escambia	13
Florahome, Putnam	13
Winter Park, Seminole	13
Okahumpka, Lake	13
Tierra Verde, Pinellas	13
Lighthouse Point, Broward	12
Palm Shores, Brevard	12
Matlacha, Lee	12
Fort Denaud, Hendry	12
Nocatee, Desoto	12
Harmony, Osceola	12
Eaton Park, Polk	12
Bascom, Jackson	12
Terra Ceia, Manatee	12
Santa Fe, Alachua	11
Goulds, Dade	11
Unknown, Dade	11
Mexico Beach, Bay	11
Sebastian, Brevard	11
Bay Pines, Pinellas	11
Barefoot Bay, Brevard	11
Intercession City, Osceola	11
North Redington Beach, Pinellas	11
Miami, Unknown	10
Missing, Glades	10
Bellview, Escambia	10
Saint Pete Beach, Pinellas	10
Palmdale, Glades	10
Balm, Hillsborough	10
Lake Suzy, Desoto	10
Missing, Lafayette	10
Heathrow, Seminole	10
Sun City, Hillsborough	10
Ocean Ridge, Palm Beach	10

COVID-19: characteristics of 527,036 Florida resident cases

Data through Aug 8, 2020 verified as of Aug 9, 2020 at 09:25 AM

Data in this report are provisional and subject to change.

The table below includes the cities and counties of residence for cases in Florida residents based on the patient's ZIP Code. Note that city is not always received as part of the initial notification and may be missing while the case is being investigated.

City and county	Cases
Dania Beach, Broward	10
Bayonet Point, Pasco	10
Treasure Island, Pinellas	9
Lorida, Highlands	9
Highland City, Polk	9
Hampton, Bradford	9
Dinsmore, Duval	9
Kinard, Calhoun	9
Bagdad, Santa Rosa	9
La Crosse, Alachua	8
Labelle, Glades	8
Pensacola Beach, Santa Rosa	8
Reunion, Osceola	8
Tyndall Air Force Base, Bay	8
Lutz, Pasco	8
Kathleen, Polk	8
Kenansville, Osceola	8
Dowling Park, Suwannee	8
Missing, Alachua	8
Tioga, Alachua	8
Homosassa Springs, Citrus	8
Orange Lake, Marion	8
Hernando Beach, Hernando	8
Key Colony Beach, Monroe	8
Hiawassee, Orange	7
Eloise, Polk	7
Enterprise, Volusia	7
Wabasso, Indian River	7
Gonzalez, Escambia	7
Aloma, Orange	7
Wahneta, Polk	7
Buena Ventura Lakes, Osceola	7
Cedar Key, Levy	7
Sydney, Hillsborough	7
Tangerine, Orange	7
Highland Beach, Palm Beach	7
Quail Heights, Dade	6
Jacksonville, Unknown	6
Bradley, Polk	6
Maitland, Seminole	6
Palma Sola, Manatee	6
Paxton, Walton	6
Missing, Putnam	6
Venus, Highlands	6
Pasadena, Pinellas	6
Goodland, Collier	6
Altamonte Springs, Orange	5
Perrine, Dade	5
West Delray Beach, Palm Beach	5
Perdido Key, Escambia	5
University Of Miami, Dade	5
Branford, Lafayette	5
Steinhatchee, Dixie	5
Rubonia, Manatee	5
Poinciana, Osceola	5
Centerville, Leon	5
Lacoochee, Pasco	5
Indian Lake Estates, Polk	5
Penney Farms, Clay	5
Murdock, Charlotte	5
Woodville, Leon	5

COVID-19: characteristics of 527,036 Florida resident cases

Data through Aug 8, 2020 verified as of Aug 9, 2020 at 09:25 AM

Data in this report are provisional and subject to change.

The table below includes the cities and counties of residence for cases in Florida residents based on the patient's ZIP Code. Note that city is not always received as part of the initial notification and may be missing while the case is being investigated.

City and county	Cases
Long Boat Key, Manatee	5
Missing, Columbia	5
Ebro, Washington	5
Cloud Lake, Palm Beach	5
Long Key, Monroe	5
Sparr, Marion	5
Ponce De Leon, Walton	5
Crystal Springs, Pasco	5
Shady Grove, Taylor	5
Mango, Hillsborough	5
North Venice, Sarasota	5
Lowell, Marion	5
Ferndale, Lake	5
Fort Lauderdale, Unknown	4
Micco, Brevard	4
Ridge Manor, Pasco	4
Siesta Key, Sarasota	4
Saint Lucie West, St. Lucie	4
Parker, Bay	4
Pembroke Park, Broward	4
Mayport, Duval	4
Sewalls Point, Martin	4
Buckingham, Lee	4
Boca Grande, Lee	4
Hallandle Beach, Broward	4
Hollywood, Dade	4
Cudjoe Key, Monroe	4
Homeland, Polk	4
Hialeah, Unknown	4
Trilby, Pasco	4
Bonifay, Washington	4
Davenport, Osceola	4
Lake City, Suwannee	4
Yankeetown, Levy	4
Plymouth, Orange	4
Lulu, Columbia	4
Maxville, Duval	4
Gulf Hammock, Levy	4
Ft Pierce, St. Lucie	4
Pine Castle, Orange	4
Ybor City, Hillsborough	4
Psl, Unknown	4
Tallevast, Manatee	4
Indian Creek Village, Dade	4
Lehigh, Lee	4
Eatonville, Orange	4
South Palm Beach, Palm Beach	4
Oneco, Manatee	4
Nichols, Polk	4
City Of Sunrise, Broward	4
Miami, Broward	4
Hollywood, Unknown	4
Gulf Stream, Palm Beach	4
Village Of Wellington, Palm Beach	4
Orlando, Osceola	4
Nobleton, Hernando	4
Northdale, Hillsborough	4
Celebration, Orange	4
Durant, Hillsborough	4
Leisure City, Dade	4
Lauderhill, Unknown	3

COVID-19: characteristics of 527,036 Florida resident cases

Data through Aug 8, 2020 verified as of Aug 9, 2020 at 09:25 AM

Data in this report are provisional and subject to change.

The table below includes the cities and counties of residence for cases in Florida residents based on the patient's ZIP Code. Note that city is not always received as part of the initial notification and may be missing while the case is being investigated.

City and county	Cases
Port Saint John, Brevard	3
Saint Leo, Pasco	3
West Palm Beach, Unknown	3
Indian River Shores, Indian River	3
International Service Center, Dade	3
Miromar Lakes, Lee	3
Mayport Naval Housing, Duval	3
Braden River, Manatee	3
Fpo, Duval	3
Fanning Springs, Gilchrist	3
Elfers, Pasco	3
Mount Plymouth, Lake	3
Westchase, Hillsborough	3
Vernon, Bay	3
Virginia Gardens, Dade	3
Lakeshore, Polk	3
Miami Gardens, Unknown	3
Pompano Beach, Unknown	3
Saint Marks, Wakulla	3
Ozona, Pinellas	3
Glenwood, Volusia	3
Deerfield Beach, Unknown	3
Milligan, Okaloosa	3
Telogia, Liberty	3
Green Acres, Palm Beach	3
Fort Ogden, Desoto	3
Forest City, Orange	3
Missing, Hamilton	3
Cottondale, Washington	3
Duette, Manatee	3
East Lake, Marion	3
Bayshore Gardens, Manatee	3
Azalea Park, Orange	3
Anna Maria, Manatee	3
Graceville, Holmes	3
Candler, Marion	3
Cortez, Manatee	3
Pine Hills, Orange	3
Orlando, Seminole	3
University Park, Manatee	3
Unknown, Broward	3
Orlando, Unknown	3
Lynbrook, Broward	3
Little Torch Key, Monroe	3
Lake Monroe, Seminole	3
Laud-By-The-Sea, Broward	3
Indian Shores, Pinellas	3
Lake Como, Putnam	3
Captiva, Lee	3
Belleair Bluffs, Pinellas	3
Archer, Levy	2
Hallandale Beach, Unknown	2
Hawthorne, Putnam	2
Fairfield, Marion	2
Jensen Beach, St. Lucie	2
Lockhart, Orange	2
Loxahatchee Groves, Palm Beach	2
Palm Beach Shores, Palm Beach	2
Ponte Vedra, Duval	2
Port Charlotte, Unknown	2
Port Saint Lucie, Martin	2

COVID-19: characteristics of 527,036 Florida resident cases

Data through Aug 8, 2020 verified as of Aug 9, 2020 at 09:25 AM

Data in this report are provisional and subject to change.

The table below includes the cities and counties of residence for cases in Florida residents based on the patient's ZIP Code. Note that city is not always received as part of the initial notification and may be missing while the case is being investigated.

City and county	Cases
The Villages, Marion	2
Valkaria, Brevard	2
West Bradenton, Manatee	2
Trenton, Levy	2
River Ranch, Polk	2
Ramrod Key, Monroe	2
Oklawaha, Marion	2
Manalapan, Palm Beach	2
Laurel, Sarasota	2
Tampa, Pinellas	2
Sunny Hills, Washington	2
Switzerland, St. Johns	2
Unknown, Palm Beach	2
Watersound, Walton	2
Grandin, Putnam	2
Inlet Beach, Bay	2
Jacksonville, Clay	2
Destin, Unknown	2
Daytona Beach Shores, Volusia	2
Gibsonia, Polk	2
Everglades City, Collier	2
Fort Charlotte, Charlotte	2
Horseshoe Beach, Dixie	2
Lealman, Pinellas	2
Margate, Unknown	2
Madison, Unknown	2
Town N Country, Hillsborough	2
Port Salerno, Martin	2
Redington Beach, Pinellas	2
Redington Shores, Pinellas	2
Champions Gate, Polk	2
Chokoloskee, Collier	2
Alturas, Polk	2
Goldenrod, Seminole	2
Lake Harbor, Palm Beach	2
Loughman, Polk	2
Westlake, Palm Beach	2
Scottsmoor, Brevard	2
Orlando, Brevard	2
Miccosukee, Leon	2
Lamont, Taylor	2
Cypress, Jackson	2
Gulf Breeze, Escambia	2
White Springs, Columbia	2
Sugarloaf, Monroe	2
Venice, Manatee	2
Unknown, Seminole	2
Sorrento, Orange	2
San Carlos Park, Lee	2
Shady Hills, Pasco	2
Miramar, Dade	2
Mesa, Unknown	2
Longboat Key, Sarasota	2
Ormond Beach, Flagler	2
Morriston, Marion	2
Earleton, Alachua	2
Clewiston, Palm Beach	2
Bayou George, Bay	2
Wakulla Springs, Wakulla	2
Union Park, Orange	2
Samoset, Manatee	2

COVID-19: characteristics of 527,036 Florida resident cases

Data through Aug 8, 2020 verified as of Aug 9, 2020 at 09:25 AM

Data in this report are provisional and subject to change.

The table below includes the cities and counties of residence for cases in Florida residents based on the patient's ZIP Code. Note that city is not always received as part of the initial notification and may be missing while the case is being investigated.

City and county	Cases
New Smyrna, Volusia	2
Palma Ceia, Hillsborough	2
Oakland Park, Unknown	2
Holder, Citrus	2
Sand Lake, Orange	2
Roseland, Indian River	2
Point Washington, Walton	2
Lake Butler, Bradford	2
Jonesville, Alachua	2
Miami, Martin	2
El Jobean, Charlotte	2
Basinger, Okeechobee	2
Dade City, Hernando	2
Fort Lauderdale, Dade	2
Franklin, Orange	1
Clearwater, Hillsborough	1
Apo, Collier	1
Big Torch Key, Monroe	1
Bonifay, Unknown	1
Arcadia, Unknown	1
Astor, Volusia	1
Austin, Dade	1
Miramar, Unknown	1
Litchfield Park, Unknown	1
Marathon Shores, Monroe	1
Mayport Naval Station, Duval	1
Mcintosh, Marion	1
Lake Worth, Unknown	1
Laurel Hill, Walton	1
Haines City, Orange	1
Jena, Taylor	1
Pensacola Naval Hospital, Escambia	1
Port St Luice, Unknown	1
Rices Landing, Dade	1
Seacrest, Bay	1
Stiamk, Dade	1
Sugarloaf Key, Monroe	1
Mount Dora, Orange	1
New Church, Palm Beach	1
New Port Richey, Hillsborough	1
Oviedo, Orange	1
Okeechobee, Highlands	1
Okeechobee, Unknown	1
Orange Park, Duval	1
Weston, Unknown	1
Williston, Marion	1
West Hollywood, Broward	1
Unknown Out Of Area, Palm Beach	1
Unknown, Duval	1
Winter Springs, Orange	1
Indian Rock Beach, Pinellas	1
Hillsboro Beach, Broward	1
Greenville, Taylor	1
Lauderdale Lakes, Unknown	1
Jupiter Inlet, Palm Beach	1
Miamksaohes, Dade	1
Metter, Manatee	1
Miami Dade, Unknown	1
Evinston, Alachua	1
Fellsmere, Brevard	1
Fernandina, Nassau	1

COVID-19: characteristics of 527,036 Florida resident cases

Data through Aug 8, 2020 verified as of Aug 9, 2020 at 09:25 AM

Data in this report are provisional and subject to change.

The table below includes the cities and counties of residence for cases in Florida residents based on the patient's ZIP Code. Note that city is not always received as part of the initial notification and may be missing while the case is being investigated.

City and county	Cases
Fwb, Escambia	1
Graham, Bradford	1
Cypress Gardens, Polk	1
Orlando, Manatee	1
Okeechobee, Martin	1
Okeechobi, Unknown	1
Pennsacola, Escambia	1
Pensacola, Dade	1
Pooler, Broward	1
North Lauderdale, Unknown	1
North Miami, Palm Beach	1
North Port, Manatee	1
Sunrise, Unknown	1
Suwannee, Dixie	1
Syracuse, Unknown	1
Salem, Taylor	1
Sarasota, Unknown	1
Seacrest, Walton	1
Unknown, Manatee	1
St Cloud, Orange	1
Twentynine Palms, Broward	1
Windermere, Unknown	1
Xifamk, Dade	1
Babcock Ranch, Charlotte	1
Alva, Escambia	1
Branford, Gilchrist	1
Brentwood, Citrus	1
Cape Haze, Charlotte	1
Champions Gate, Osceola	1
Davie, Unknown	1
Duck Key, Monroe	1
Jacksonville, Nassau	1
Homossa, Orange	1
Hosford, Calhoun	1
Interlachen, Duval	1
Jacksonville Naval Air Station, Duval	1
Jacksonville Naval Hospital, Duval	1
Mount Dora, Seminole	1
North Fort Myers, Charlotte	1
North Laud, Unknown	1
Monroe, Hillsborough	1
Oldsrav, Manatee	1
Lucedale, St. Lucie	1
Sharpes, Brevard	1
Sanford, Orange	1
Sunrtise, Dade	1
Unable To Obtain, Palm Beach	1
University Of Tampa, Hillsborough	1
Unk, Alachua	1
Punta Gorda, Unknown	1
Rivera Beach, Palm Beach	1
Panama City, Unknown	1
Perth Amboy, Hillsborough	1
Uknown, Unknown	1
Watersound, Bay	1
Yeehaw, Okeechobee	1
Unknown, Volusia	1
Tamarac, Dade	1
Westville, Walton	1
Other, Dade	1
Orl, Osceola	1

COVID-19: characteristics of 527,036 Florida resident cases

Data through Aug 8, 2020 verified as of Aug 9, 2020 at 09:25 AM

Data in this report are provisional and subject to change.

The table below includes the cities and counties of residence for cases in Florida residents based on the patient's ZIP Code. Note that city is not always received as part of the initial notification and may be missing while the case is being investigated.

City and county	Cases
Northport, Sarasota	1
New Port Richey, Unknown	1
Pass-A-Grille Beach, Pinellas	1
Pensacola Beach, Escambia	1
Pensacola, Unknown	1
Port Saint Lucie, Palm Beach	1
Rocky Point, Hillsborough	1
Rosemary Beach, Walton	1
Saint Johns, Duval	1
Salt Springs, Marion	1
Hallandale, Unknown	1
Hoclywsod, Dade	1
Clarcona, Orange	1
Coconut Ck, Unknown	1
Deerfield, Broward	1
Apollo Beach, Manatee	1
32428, Washington	1
Alpharetta, Broward	1
Lakeland, Unknown	1
Jacksonville, Orange	1
Homeless, Hillsborough	1
Homeless, Monroe	1
Homeless, Pinellas	1
Hutchinson Island, St. Lucie	1
Miamc, Dade	1
Layton, Monroe	1
Lehigh Acers, Lee	1
Los Angeles, Dade	1
Rosemary Beach, Bay	1
Saint Cloud, Orange	1
Saint Petersburg, Dade	1
San Pedro Sula, Dade	1
Port Charlotte Fl, Unknown	1
Palm Bay, Dade	1
Palm Coast, Orange	1
Opa Locka, Unknown	1
Orange, Orange	1
Seminole, Orange	1
Wimauma, Manatee	1
Turmero, Dade	1
Tampa, Dade	1
Miami Granders, Dade	1
Los Angeles, Polk	1
Lanark Village, Franklin	1
Grand Island, Unknown	1
Hialean, Unknown	1
Holt, Unknown	1
999999, Okaloosa	1
Bartow, Unknown	1
Caryville, Holmes	1
Cassadaga, Volusia	1
Bostwick, Putnam	1
Brewton, Escambia	1
Cosselberry, Orange	1
Crestview, Dade	1
Darien, Pasco	1
Fort Myers, Seminole	1
Fwb, Unknown	1
Gastonia, Polk	1
Deltona , Volusia	1
South Fort Myers, Lee	1

COVID-19: characteristics of 527,036 Florida resident cases

Data through Aug 8, 2020 verified as of Aug 9, 2020 at 09:25 AM

Data in this report are provisional and subject to change.

The table below includes the cities and counties of residence for cases in Florida residents based on the patient's ZIP Code. Note that city is not always received as part of the initial notification and may be missing while the case is being investigated.

City and county	Cases
Tampa, Orange	1
University Of Central Fl, Orange	1
Valrico, Orange	1
Winterpark, Unknown	1
Wewahitchka, Calhoun	1
Longwood, Orange	1
Miamt, Dade	1
Mid Florida, Seminole	1
Olrand, Orange	1
Palm City, Unknown	1
Ocala, Unknown	1
Ocean Breeze, Martin	1
N/A, Duval	1
Nokomis, Palm Beach	1
Live Oak, Columbia	1
Hurlburt Field, Okaloosa	1
Homeless, Dade	1
Ft Pierce, Unknown	1
Garland, Orange	1
Hallandate Ben, Unknown	1
Greenacres, Unknown	1
Eustic, Unknown	1
Everett, Dade	1
Apopka, Unknown	1
Alligator Point, Wakulla	1
Amelia City, Nassau	1
Bonita Springs, Collier	1
Hispanic, St. Lucie	1
Kissimmee, Brevard	1
Fort Pierce, Martin	1
Fl, Dade	1
Florence Villa, Polk	1
Ester, Collier	1
Fellsmee, Brevard	1
Doctors Inlet, Clay	1
Dade City, Hillsborough	1
Clermont, Orange	1
Clermont, Polk	1
Celeste, Broward	1
Bay Lake, Orange	1
Beverly Beach, Flagler	1
99, Unknown	1
Aollywoss, Dade	1
Unknown, Columbia	1
Tarpon Springs, Pasco	1
Tewksbury, Orange	1
Wesley Chapel, Alachua	1
Weston, Dade	1
White City, Gulf	1
Tampa Palms, Hillsborough	1
South Daytona Beach, Volusia	1
San Antonio, Unknown	1
Miamf, Dade	1
Olustee, Baker	1
Ocala, Alachua	1
Okeechobee, St. Lucie	1
Pine Ridge, Citrus	1
Saint Augusaintine Beach, St. Johns	1
Seven Springs, Pasco	1
Tallahassee, Unknown	1
South Miami, Unknown	1

COVID-19: characteristics of 527,036 Florida resident cases

Data through Aug 8, 2020 verified as of Aug 9, 2020 at 09:25 AM

Data in this report are provisional and subject to change.

The table below includes the cities and counties of residence for cases in Florida residents based on the patient's ZIP Code. Note that city is not always received as part of the initial notification and may be missing while the case is being investigated.

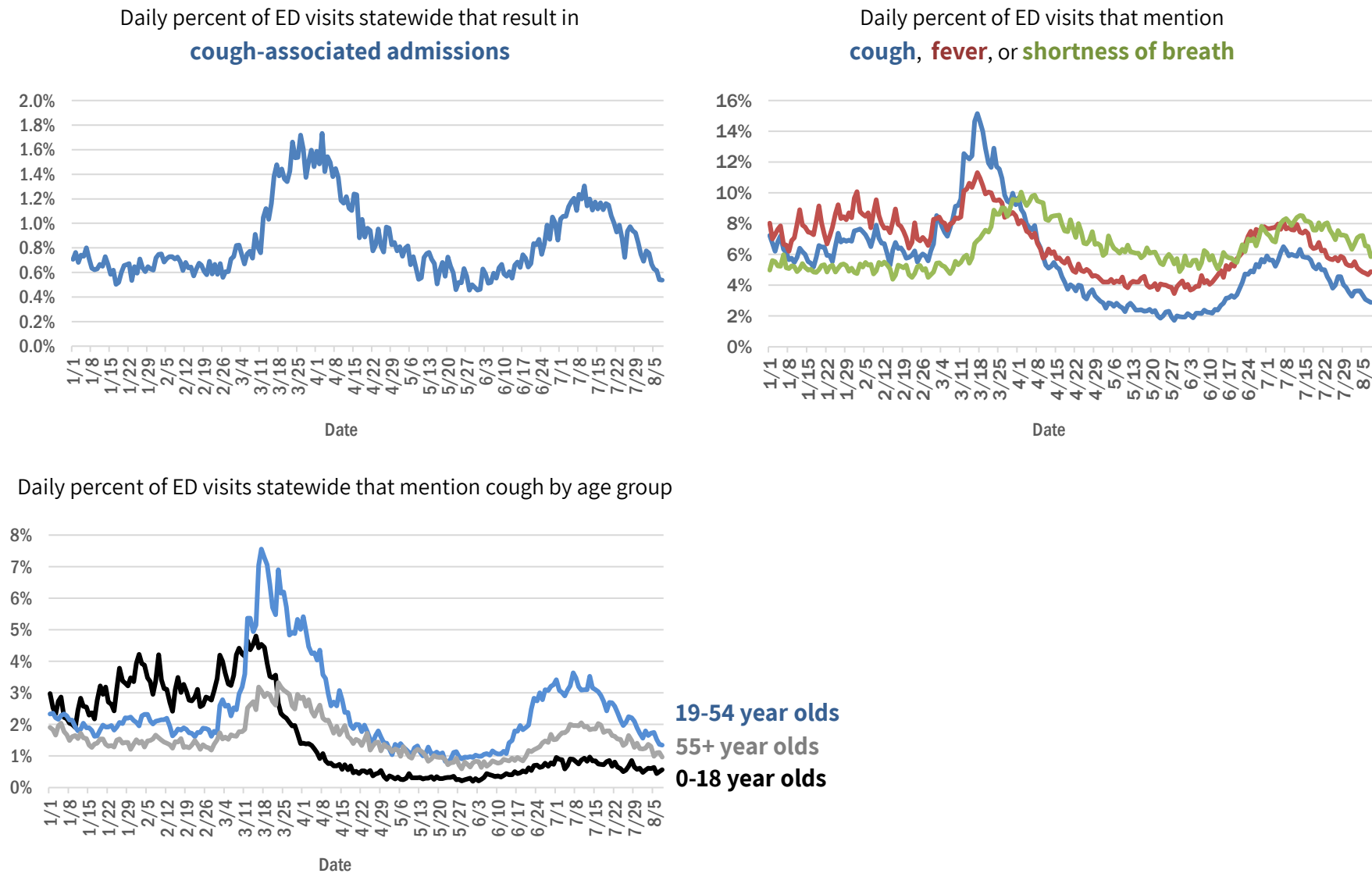
City and county	Cases
West Villages, Sarasota	1
Wintergarden, Orange	1
Washington, Unknown	1
Unkown, Seminole	1
Pcb, Bay	1
Port Everglades, Broward	1
Newark, Broward	1
Niceville, Walton	1
Mount Pleasant, Gadsden	1
Middlesburg, Duval	1
Miami, Palm Beach	1
Jupiter, Duval	1
Lake Geneva, Clay	1
Immokalee, Lee	1
Davenport, Orange	1
Boca Raton, Orange	1
Brooksville, Pasco	1
Apopka, Seminole	1
Total	527,036

COVID-19: additional surveillance information

Data through Aug 8, 2020 verified as of Aug 9, 2020 at 09:25 AM

Data in this report are provisional and subject to change.

Statewide emergency department (ED) chief complaint and admission data



The Electronic Surveillance System for the Early Notification of Community-Based Epidemics (ESSENCE-FL) includes chief complaint data from 211 of 212 Florida EDs. Data are transmitted electronically to ESSENCE-FL daily or hourly.

COVID-19: All persons with tests reported

Data through Aug 8, 2020 verified as of Aug 9, 2020 at 09:25 AM

Data in this report are provisional and subject to change.

The table below includes persons with laboratory results that the Department of Health has received electronically or by mail/fax for Florida residents and non-Florida residents.

County	Awaiting testing	Inconclusive	Negative	Positive	Percent positive	Total tested
Dade	273	1,693	548,078	132,461	19%	682,232
Broward	166	751	371,103	62,268	14%	434,122
Palm Beach	270	584	242,529	37,020	13%	280,133
Orange	442	285	240,349	31,719	12%	272,353
Hillsborough	192	482	210,757	32,587	13%	243,826
Duval	176	220	186,989	23,437	11%	210,646
Pinellas	15	145	154,502	17,879	10%	172,526
Lee	28	54	97,457	16,529	14%	114,040
Polk	55	101	82,583	14,301	15%	96,985
Manatee	8	62	75,676	9,288	11%	85,026
Brevard	13	56	77,553	6,064	7%	83,673
Sarasota	21	46	67,591	6,231	8%	73,868
Volusia	69	106	65,827	7,876	11%	73,809
Escambia	11	43	62,199	9,508	13%	71,750
Alachua	4	23	67,244	4,142	6%	71,409
Seminole	61	66	61,081	7,118	10%	68,265
Pasco	105	50	60,464	7,080	10%	67,594
Lake	81	88	59,840	5,161	8%	65,089
Osceola	113	127	54,093	9,696	15%	63,916
Collier	204	67	52,280	10,334	16%	62,681
Leon	20	114	54,686	4,965	8%	59,765
Marion	237	98	45,823	6,511	12%	52,432
St. Lucie	273	54	37,155	5,772	13%	42,981
St. Johns	45	32	37,183	3,635	9%	40,850
Clay	13	18	31,486	3,282	9%	34,786
Okaloosa	37	43	25,829	3,502	12%	29,374
Santa Rosa	19	37	24,685	3,939	14%	28,661
Indian River	55	14	24,558	2,523	9%	27,095
Bay	10	59	22,179	4,440	17%	26,678
Charlotte	10	34	23,881	2,238	9%	26,153
Martin	53	37	21,780	3,825	15%	25,642
Hernando	2	13	16,948	2,022	11%	18,983
Citrus	36	11	16,886	1,539	8%	18,436
Sumter	23	13	16,482	1,303	7%	17,798
Highlands	8	12	14,549	1,435	9%	15,996
Flagler	6	19	13,999	1,070	7%	15,088
Nassau	31	17	13,722	1,233	8%	14,972
Monroe	65	12	12,173	1,526	11%	13,711
Columbia	4	55	10,664	2,873	21%	13,592
Gadsden	7	38	11,025	1,884	15%	12,947
Putnam	2	11	11,426	1,508	12%	12,945
Jackson	5	14	9,713	1,821	16%	11,548
Walton	2	37	8,333	1,408	14%	9,778
Desoto	5	7	8,185	1,351	14%	9,543
Hendry		17	6,556	1,762	21%	8,335
Wakulla	3	34	7,087	692	9%	7,813
Suwannee	2	21	6,301	1,454	19%	7,776

COVID-19: All persons with tests reported

Data through Aug 8, 2020 verified as of Aug 9, 2020 at 09:25 AM

Data in this report are provisional and subject to change.

The table below includes persons with laboratory results that the Department of Health has received electronically or by mail/fax for Florida residents and non-Florida residents.

County	Awaiting testing	Inconclusive	Negative	Positive	Percent positive	Total tested
Okeechobee	2	14	5,525	1,039	16%	6,578
Levy	2	11	5,567	684	11%	6,262
Union		9	5,895	310	5%	6,214
Washington	16	21	5,311	867	14%	6,199
Unknown	3	33	5,348	695	11%	6,076
Hardee		12	4,833	963	17%	5,808
Baker	24	14	4,706	907	16%	5,627
Taylor	7	27	4,226	961	18%	5,214
Madison	1	10	4,385	700	14%	5,095
Gulf	3	4	4,161	648	13%	4,813
Bradford	1	21	4,005	494	11%	4,520
Holmes	4	7	3,758	505	12%	4,270
Hamilton	1	2	3,434	618	15%	4,054
Calhoun	1	16	3,502	475	12%	3,993
Franklin	2	10	3,464	418	11%	3,892
Dixie		6	3,251	547	14%	3,804
Gilchrist	3	7	3,279	363	10%	3,649
Liberty	1		2,683	400	13%	3,083
Jefferson	1	14	2,520	453	15%	2,987
Glades		2	725	401	36%	1,128
Lafayette	1	3	790	146	16%	939
Total	3,353	6,163	3,452,857	532,806	13%	3,991,826

COVID-19: testing by laboratory

Data through Aug 8, 2020 verified as of Aug 9, 2020 at 09:25 AM

Data in this report are provisional and subject to change.

The numbers in the table below represent the number for whom test results were received by the Department of Health. A person can be tested by more than one laboratory and can have both positive and negative results. **Therefore, the sum of the numbers in each column will be larger than the total number of people tested.**

Reporting lab	Inconclusive	Negative	Positive	Percent positive	Total
QUEST DIAGNOSTICS - TAMPA	5,501	672,705	98,084	13%	776,290
LABORATORY CORPORATION OF AMERICA	1,092	668,198	97,587	13%	766,877
BIO REFERENCE LABORATORIES, INC	4,996	445,671	88,432	16%	539,099
GENETWORX	662	383,625	32,394	8%	416,681
REALTOX LABS LLC	2,321	202,904	36,262	15%	241,487
CURATIVE_LABS	2,937	192,349	19,252	9%	214,538
NORTHWEST LABORATORY	214	115,521	5,925	5%	121,660
ADVENT HEALTH LAB	112	101,283	14,045	12%	115,440
MEDICAL DIAGNOSTIC LABORATORIES	762	79,449	11,275	12%	91,486
KORVALABS, INC	966	84,043	4,065	5%	89,074
ELABNETWORK	486	66,793	6,152	8%	73,431
BIOCOLLECTIONS WORLDWIDE, INC	298	56,529	9,276	14%	66,103
MAYO CLINIC LABORATORIES	126	59,361	6,276	10%	65,763
MEMORIAL REGIONAL HOSPITAL SOUTH	18	46,713	12,187	21%	58,918
MAKO GENOMICS	2,510	45,380	9,037	16%	56,927
QUEST DIAGNOSTICS NICHOLS INSTITUTE, INC.	200	49,502	6,472	12%	56,174
BAYCARE LABORATORIES LLC	290	49,716	5,279	10%	55,285
BPHL-JACKSONVILLE	13	42,015	7,823	16%	49,851
SACRED HEART HOSPITAL LABORATORY	2	43,028	5,379	11%	48,409
ORLANDO REG MED CENTER CLINICAL LAB	438	41,532	5,465	12%	47,435
DIATHERIX LABORATORIES		38,101	5,482	13%	43,583
TAMPA GENERAL HOSPITAL	4	37,593	2,973	7%	40,570
TESTING MATTERS INC		35,301	4,947	12%	40,248
UF PATHLABS	33	37,945	1,611	4%	39,589
BPHL-MIAMI	206	28,377	6,556	19%	35,139
VIRACOR-EUROFINS LABORATORIES		26,099	8,343	24%	34,442
ARUP LABORATORIES		31,994	2,321	7%	34,315
JACKSON MEMORIAL HOSPITAL CLINICAL LAB	79	26,523	6,539	20%	33,141
BPHL-TAMPA (SPECTRUM BLVD)	45	23,780	4,007	14%	27,832
AIT LABORATORIES		22,975	2,719	11%	25,694
SHANDS AT THE UNIVERSITY OF FLORIDA	141	23,948	1,341	5%	25,430
ST VINCENT'S MEDICAL CENTER - RIVERSIDE	1	19,355	2,354	11%	21,710
LAKELAND REGIONAL MEDICAL CENTER	52	19,299	2,262	10%	21,613
Florida_Hospital	26	17,815	3,050	15%	20,891
WALGREENS	9	15,538	2,541	14%	18,088
SUNPATH MEDICAL DIAGNOSTICS LABORATORY	85	14,939	2,769	16%	17,793
CAPE CORAL HOSPITAL CLINICAL LABORATORY		14,129	2,755	16%	16,884
BROWARD GENERAL MEDICAL CENTER-CLINICAL LAB	2	13,679	1,933	12%	15,614
SHANDS JACKSONVILLE MEDICAL CENTER INC	31	12,300	1,152	9%	13,483
BAPTIST HOSPITAL OF MIAMI CLINICAL LABORATORY	13	10,925	2,406	18%	13,344
BAPTIST MEDICAL CENTER JACKSONVILLE	1	12,418	852	6%	13,271
STATLAB_MOBILE		12,080	1,024	8%	13,104
CLEVELAND CLINIC HOSPITAL LAB	4	11,132	1,137	9%	12,273
FLORIDA HOSPITAL - TAMPA	5	10,840	1,104	9%	11,949
ADVENTHEALTH DAYTONA BEACH	20	10,829	909	8%	11,758
NAPLES COMMUNITY HOSPITAL	24	10,122	1,200	11%	11,346

COVID-19: testing by laboratory

Data through Aug 8, 2020 verified as of Aug 9, 2020 at 09:25 AM

Data in this report are provisional and subject to change.

The numbers in the table below represent the number for whom test results were received by the Department of Health. A person can be tested by more than one laboratory and can have both positive and negative results. **Therefore, the sum of the numbers in each column will be larger than the total number of people tested.**

Reporting lab	Inconclusive	Negative	Positive	Percent positive	Total
SARASOTA MEMORIAL HOSPITAL MAIN LAB	12	9,972	935	9%	10,919
APPLIED INGENUITY DIAGNOSTICS LLC		10,186	679	6%	10,865
ST JOSEPHS HOSPITAL LABORATORY	9	9,481	1,327	12%	10,817
PALMETTO GENERAL HOSPITAL LAB	3	8,043	2,604	24%	10,650
MOUNT SINAI MEDICAL CENTER	6	8,582	1,084	11%	9,672
MILLENNIUM PHYSICIAN GROUP		7,797	1,608	17%	9,405
INTEGRATED REGIONAL LABORATORIES LLP		7,735	1,461	16%	9,196
UNIVERSITY OF MIAMI HOSPITAL	9	7,277	1,559	18%	8,845
NORTH FLORIDA REGIONAL MEDICAL CENTER		7,933	824	9%	8,757
JFK MEDICAL CENTER LAB	1	7,221	1,439	17%	8,661
NICKLAUS CHILDREN'S HOSPITAL	22	6,879	1,707	20%	8,608
SAINT MARY'S MEDICAL CENTER	10	7,208	1,202	14%	8,420
QUEST NEW ENGLAND	35	7,394	991	12%	8,420
MORTON PLANT HOSPITAL-ADLER INSTITUTE	7	7,712	638	8%	8,357
ECCO LAB GROUP CO	264	5,990	1,915	23%	8,169
LABCORP BURLINGTON (LPP)	3	7,750	349	4%	8,102
BRANDON REGIONAL HOSPITAL		6,781	1,300	16%	8,081
TALLAHASSEE MEMORIAL HOSPITAL	23	7,262	688	9%	7,973
JUPITER MEDICAL CENTER LAB	36	6,849	1,003	13%	7,888
SOUTH MIAMI HOSPITAL LAB	10	6,795	1,079	14%	7,884
WELLINGTON REGIONAL MED CTR LAB	3	6,161	1,044	14%	7,208
FLORIDA HOSPITAL WATERMAN LABORATORY	15	6,498	532	8%	7,045
INDIAN RIVER MEDICAL CENTER LAB		6,584	433	6%	7,017
REAL DIAGNOSTICS	77	6,449	465	7%	6,991
MEMORIAL REGIONAL HOSPITAL CLINICAL LABORATORY	8	6,273	500	7%	6,781
PANCARE OF FLORIDA INC		6,240	393	6%	6,633
LARKIN COMMUNITY HOSPITAL	10	5,423	1,033	16%	6,466
AEGIS SCIENCES CORPORATION	27	5,580	482	8%	6,089
BAPTIST HOSPITAL OF MIAMI MOLECULAR DIAGNOSTICS	54	5,104	777	13%	5,935
DELRAY MEDICAL CENTER	2	5,169	681	12%	5,852
HOMESTEAD HOSPITAL CLINICAL LABORATORY	9	4,502	1,327	23%	5,838
MEMORIAL HOSPITAL JACKSONVILLE	8	4,445	1,192	21%	5,645
ST ANTHONY'S HOSPITAL LAB	10	4,914	678	12%	5,602
ARNOLD PALMER MEDICAL CENTER CLINICAL LAB		5,434	166	3%	5,600
OSCEOLA REGIONAL MEDICAL CENTER	1	4,524	926	17%	5,451
LEESBURG REGIONAL MEDICAL CENTER		4,820	599	11%	5,419
AKESOGEN		4,640	751	14%	5,391
WINTER HAVEN HOSPITAL CLINICAL LABORATORY	1	4,509	868	16%	5,378
WEST KENDALL BAPTIST HOSPITAL LABORATORY	3	4,191	1,125	21%	5,319
MARTIN HOSPITAL SOUTH LAB		4,745	268	5%	5,013
ST JOSEPHS HOSPITAL	7	4,313	666	13%	4,986
GOOD SAMARITAN MEDICAL CENTER LAB	1	4,096	844	17%	4,941
MEASE COUNTRYSIDE LAB	1	4,332	476	10%	4,809

COVID-19: testing by laboratory

Data through Aug 8, 2020 verified as of Aug 9, 2020 at 09:25 AM

Data in this report are provisional and subject to change.

The numbers in the table below represent the number for whom test results were received by the Department of Health. A person can be tested by more than one laboratory and can have both positive and negative results. **Therefore, the sum of the numbers in each column will be larger than the total number of people tested.**

Reporting lab	Inconclusive	Negative	Positive	Percent positive	Total
LAWNWOOD REGIONAL MEDICAL CENTER	1	3,998	808	17%	4,807
ORANGE PARK MEDICAL CENTER	7	3,702	1,014	21%	4,723
BAPTIST MEDICAL CENTER SOUTH		4,316	353	8%	4,669
LARKIN COMMUNITY HOSPITAL INC DBA CARDIOTROPIC		1,664	2,864	63%	4,528
QUEST DIAGNOSTICS INFECTIOUS DISEASE INC	13	3,272	1,089	25%	4,374
GULF COAST MEDICAL CENTER MICROLAB		3,173	1,159	27%	4,332
QUEST DIAGNOSTICS NICHOLS INSTITUTE - SJC (ELR)	14	3,621	598	14%	4,233
FLORIDA HOSPITAL HEARTLAND MED CTR CLINICAL LAB	1	3,760	421	10%	4,182
HALIFAX MEDICAL CENTER LAB	14	3,537	602	14%	4,153
WESTSIDE REGIONAL MED CTR	2	3,297	839	20%	4,138
WEST FLORIDA HOSPITAL LAB		3,207	921	22%	4,128
BAPTIST HOSPITAL LABORATORY	4	3,448	669	16%	4,121
BETHESDA HOSPITAL EAST		3,588	503	12%	4,091
QUEST DIAGNOSTICS - WEST HILLS	15	3,897	169	4%	4,081
WEST BOCA MEDICAL CENTER LAB		3,585	452	11%	4,037
MANATEE MEMORIAL HOSPITAL		3,591	440	11%	4,031
FLORIDA HOSPITAL WESLEY CHAPEL	1	3,568	348	9%	3,917
CORAL GABLES HOSPITAL CLINICAL LABORATORY		2,924	965	25%	3,889
AVENTURA HOSPITAL LAB		2,793	1,010	27%	3,803
MERCY HOSPITAL A CAMPUS OF PLANTATION GEN HOSP LAB	1	2,761	1,035	27%	3,797
DRS CLACK SPENCER WHITE & MCCORMACK PA D/B/A		3,252	538	14%	3,790
MEMORIAL HOSPITAL WEST LABORATORY SERVICES	10	3,363	389	10%	3,762
ABL MEDICAL CARE LLC		3,278	483	13%	3,761
NCH NORTH NAPLES HOSPITAL LAB	2	3,264	495	13%	3,761
LARGO MEDICAL CENTER		3,225	516	14%	3,741
OAK HILL HOSPITAL		3,288	438	12%	3,726
PALM BEACH GARDENS MEDICAL CTR LAB		3,333	364	10%	3,697
NORTHWEST MEDICAL CENTER	1	2,804	888	24%	3,693
DOCTORS HOSPITAL	2	2,856	788	22%	3,646
RUTGERS CLINICAL GENOMICS LABORATORY	5	3,464	172	5%	3,641
Lee Memorial Hospital		2,951	657	18%	3,608
BROWARD HEALTH NORTH CLINICAL LABORATORY		3,038	519	15%	3,557
HEALTH PARK MEDICAL CENTER CLINICAL LAB		2,834	722	20%	3,556
CORAL SPRINGS MED CTR		3,147	403	11%	3,550
PALMS WEST HOSPITAL LAB	2	2,752	776	22%	3,530
NORTH SHORE MEDICAL CENTER		2,640	778	23%	3,418
FLORIDA HOSPITAL ZEPHYRHILLS		3,126	262	8%	3,388
Capital Regional Medical Ctr		2,704	673	20%	3,377
NEW YORK STATE ELR - SUNRISE MEDICAL LABORATORIES		3,288	77	2%	3,365
THE VILLAGES REGIONAL HOSPITAL		3,079	264	8%	3,343
PATIENTS FIRST LAKE ELLA MEDICAL CENTER PA		2,532	795	24%	3,327
MOFFITT CANCER CENTER	5	3,284	36	1%	3,325
CLEVELAND CLINIC MARTIN SOUTH HOSPITAL		3,009	305	9%	3,314

COVID-19: testing by laboratory

Data through Aug 8, 2020 verified as of Aug 9, 2020 at 09:25 AM

Data in this report are provisional and subject to change.

The numbers in the table below represent the number for whom test results were received by the Department of Health. A person can be tested by more than one laboratory and can have both positive and negative results. **Therefore, the sum of the numbers in each column will be larger than the total number of people tested.**

Reporting lab	Inconclusive	Negative	Positive	Percent positive	Total
FLORIDA HOSPITAL FLAGLER	2	3,088	213	6%	3,303
FLORIDA MEDICAL CENTER - A CAMPUS OF NORTH SHORE	2	2,681	542	17%	3,225
BLAKE MEDICAL CENTER		2,593	629	20%	3,222
FLORIDA HOSPITAL DELAND	2	2,585	549	18%	3,136
CARDIOTROPIC LABS	81	2,285	669	22%	3,035
PLANTATION GENERAL HOSPITAL		2,211	805	27%	3,016
REGIONAL MEDCIAL CENTER BAYONET POINT	1	2,748	258	9%	3,007
FLORIDA HOSPITAL OF CARROLLWOOD		2,528	446	15%	2,974
BAYFRONT MEDICAL CENTER	10	2,183	781	26%	2,974
NEMOURS CHILDRENS HOSPITAL		2,819	64	2%	2,883
NORTHSIDE HOSPITAL AND HEART INSTITUTE		2,361	401	15%	2,762
MEDICAL CENTER OF TRINITY CLINICAL LABORATORY		2,339	419	15%	2,758
LAKE CITY MEDICAL CENTER		2,035	638	24%	2,673
MORTON PLANT-MEASE		2,455	200	8%	2,655
OCALA REGIONAL MEDICAL CENTER		2,340	302	11%	2,642
ST JOSEPHS NORTH HOSPITAL LAB		2,302	292	11%	2,594
BAPTIST MEDICAL CENTER - BEACHES		2,402	165	6%	2,567
IMPERIAL POINT MEDICAL CENTER		2,260	252	10%	2,512
GULF COAST MEDICAL CENTER LAB		1,938	540	22%	2,478
DR. P. PHILLIPS HOSPITAL		2,396	71	3%	2,467
QUEST DIAGNOSTICS	3	2,151	306	12%	2,460
CENTRAL FLORIDA REGIONAL HOSPITAL		2,110	349	14%	2,459
LAKEWOOD RANCH MEDICAL CENTER		2,187	243	10%	2,430
INFORM DIAGNOSTICS, INC		2,209	126	5%	2,335
ST LUCIE MEDICAL CENTER		1,856	459	20%	2,315
SOUTH FLORIDA BAPTIST HOSPITAL MICRO	1	1,881	354	16%	2,236
POINCIANA MEDICAL CENTER		1,597	624	28%	2,221
BIOCERNA LABS	119	1,505	567	26%	2,191
FULGENT DIAGNOSTICS	68	1,960	160	7%	2,188
MEDCOMP SCIENCES LLC	27	1,291	865	40%	2,183
WESTCHESTER HOSPITAL	14	1,758	384	18%	2,156
EXACT SCIENCES LABORATORIES		1,942	190	9%	2,132
VISTA CLINICAL		1,152	976	46%	2,128
SOUTH LAKE HOSPITAL		2,043	80	4%	2,123
LEON MEDICAL CENTERS LLC		1,585	493	24%	2,078
BAPTIST MEDICAL CENTER - NASSAU		1,950	101	5%	2,051
UNIVERSITY HOSPITAL AND MEDICAL CENTER		1,458	539	27%	1,997
FLORIDA HOSPITAL NORTH PINELLAS	5	1,832	151	8%	1,988
PHYSICIANS REGIONAL MEDICAL CENTER - PINE RIDGE RD		1,606	373	19%	1,979
WEST MARION COMMUINITY HOSPITAL LAB		1,749	204	10%	1,953
BOSTON HEART DIAGNOSTICS CORP		1,684	256	13%	1,940
WEST PALM HOSPITAL LAB		1,611	292	15%	1,903
UHEALTH CORAL GABLES/LENNAR MED CTR		1,784	92	5%	1,876
SOUTH SEMINOLE HOSPITAL LABORATORY		1,769	77	4%	1,846
QUEST DIAGNOSTICS - ATLANTA	2	1,615	227	12%	1,844
ALL CHILDREN'S HOSPITAL LAB		1,631	153	9%	1,784

COVID-19: testing by laboratory

Data through Aug 8, 2020 verified as of Aug 9, 2020 at 09:25 AM

Data in this report are provisional and subject to change.

The numbers in the table below represent the number for whom test results were received by the Department of Health. A person can be tested by more than one laboratory and can have both positive and negative results. **Therefore, the sum of the numbers in each column will be larger than the total number of people tested.**

Reporting lab	Inconclusive	Negative	Positive	Percent positive	Total
ST PETERSBURG GENERAL HOSPITAL		1,314	468	26%	1,782
MEMORIAL HOSPITAL- MIRAMAR	10	1,617	140	8%	1,767
MEMORIAL HOSPITAL MICRO		1,536	203	12%	1,739
QUEST DIAGNOSTICS LENEXA	13	1,536	135	8%	1,684
MEASE DUNEDIN HOSPITAL	4	1,487	164	10%	1,655
CITRUS MEMORIAL HOSPITAL LABORATORY		1,566	85	5%	1,651
HIALEAH HOSPITAL	4	1,232	396	24%	1,632
FLORIDA HOSPITAL FISH MEMORIAL		1,345	277	17%	1,622
BAPTIST NORTH EMERGENCY CENTER		1,170	451	28%	1,621
FORT WALTON BEACH MEDICAL CENTER		1,369	228	14%	1,597
LEE HEALTH COCONUT POINT CLINICAL LAB	1	1,240	303	20%	1,544
OVIEDO MEDICAL CENTER		1,285	249	16%	1,534
OPTEO LABORATORY		1,505	29	2%	1,534
ADVENTHEALTH OCALA LABORATORY		1,304	211	14%	1,515
MEMORIAL HOSPITAL PEMBROKE	3	1,316	185	12%	1,504
NIGHT LITE PEDIATRICS		1,081	378	26%	1,459
DOCTORS HOSPITAL OF SARASOTA CLINICAL LABORATORY		1,291	153	11%	1,444
PALMS OF PASADENA HOSPITAL		1,201	212	15%	1,413
CLEVELAND CLINIC TRADITION HOSPITAL		1,238	167	12%	1,405
RAULERSON HOSPITAL		1,127	235	17%	1,362
ANNE BATES LEACH EYE HOSPITAL/ ABLEH MICROBIOLOGY LABORATORY		1,319	35	3%	1,354
ST VINCENT'S MEDICAL CENTER - SOUTHSIDE		1,307	26	2%	1,333
LOWER KEYS MEDICAL CENTER		1,150	117	9%	1,267
ACCESS MEDICAL LABORATORIES		559	705	56%	1,264
AMERICAN HEALTH ASSOCIATES	5	554	697	55%	1,256
PUTNAM COMMUNITY MEDICAL CENTER		1,070	178	14%	1,248
CLEVELAND CLINIC MARTIN NORTH HOSPITAL		1,078	168	13%	1,246
SOUTH BAY HOSPITAL MICRO		1,034	209	17%	1,243
CLINICORE		1,112	91	8%	1,203
BARTOW REGIONAL MEDICAL CENTER	1	1,005	172	15%	1,178
WALGREEN CO	1	1,018	159	13%	1,178
PHYSICIANS REGIONAL MEDICAL CENTER - COLLIER BLVD	1	893	277	24%	1,171
BETHESDA HOSPITAL WEST		1,039	129	11%	1,168
NONA SCIENTIFIC	1	993	163	14%	1,157
P4 CLINICAL, LLC	16	968	165	14%	1,149
QUEST DIAGNOSTICS - MIRAMAR	6	312	825	72%	1,143
BMCT Molecular Diagnostics Subsection		885	218	20%	1,103
TWIN CITIES HOSPITAL		1,004	98	9%	1,102
SYNERGY LABORATORIES	2	983	69	7%	1,054
HEALTHQUEST ESOTERICS		494	507	51%	1,001
HIGHLANDS REGIONAL MEDICAL CENTER		821	159	16%	980
VIKOR SCIENTIFIC	2	604	371	38%	977
LMHS		901	75	8%	976
LAKESIDE MEDICAL CENTER		658	317	33%	975
ORLANDO VA MEDICAL CENTER		853	109	11%	962
GULF BREEZE HOSPITAL LAB	1	803	122	13%	926

COVID-19: testing by laboratory

Data through Aug 8, 2020 verified as of Aug 9, 2020 at 09:25 AM

Data in this report are provisional and subject to change.

The numbers in the table below represent the number for whom test results were received by the Department of Health. A person can be tested by more than one laboratory and can have both positive and negative results. **Therefore, the sum of the numbers in each column will be larger than the total number of people tested.**

Reporting lab	Inconclusive	Negative	Positive	Percent positive	Total
SACRED HEART-EMERALD COAST		761	156	17%	917
PWN HEALTH	4	578	249	30%	831
FLORIDA HOSPITAL ORLANDO		745	73	9%	818
QUEST DIAGNOSTICS WOOD DALE	2	742	65	8%	809
ENGLEWOOD COMMUNITY HOSPITAL		738	66	8%	804
ST VINCENTS CLAY COUNTY		775	23	3%	798
BAPTIST EMERGENCY CENTER OAKLEAF		644	145	18%	789
ACCESSDX	6	405	363	47%	774
UNIVERSITY OF MIAMI HOSPITAL & CLINICS	1	687	52	7%	740
AVENTUS BIOLABS	1	382	337	47%	720
MARINERS HOSPITAL		617	89	13%	706
CAPSTONE HEALTHCARE		438	232	35%	670
BAPTIST HEALTH EMERGENCY CENTER COUNTRY WALK		539	129	19%	668
PATHNOSTICS		74	582	89%	656
UHEALTH DEERFIELD BEACH/UMSYLVESTER DEERFIELD BEACH LABORATORY	2	617	35	5%	654
BAPTIST EMERGENCY CENTER CLAY		561	93	14%	654
AVECINA MEDICAL OAKLEAF		370	256	41%	626
JACKSON HOSPITAL CLINICAL LABORATORY		529	84	14%	613
NONE		281	313	53%	594
PATIENTS FIRST - MAHAN DRIVE		164	427	72%	591
PATIENTS CHOICE LABORATORIES		178	399	69%	577
VAMC ORLANDO		296	260	47%	556
NCH HEALTHCARE SYSTEM MICROBIOLOGY LAB		1	551	100%	552
ADVANCE MEDICAL OF NAPLES			546	100%	546
LAB24 INC	1		528	100%	529
LABCORP RTP	1	50	478	90%	529
BARDMOOR LABORATORY	1	458	67	13%	526
EGLIN AIRFORCE BASE LAB		478	39	8%	517
LEE MEMORIAL HOSPITAL LAB			506	100%	506
TAMPA COMMUNITY HOSPITAL		329	163	33%	492
AVERO DIAGNOSTICS - IRVING		417	69	14%	486
QUEST DIAGNOSTICS - IRVING	9	298	176	36%	483
NCH NORTHEAST		307	165	35%	472
QUEST	3	90	364	80%	457
PANCARE OF FLORIDA, INC			439	100%	439
ASSURANCE SCIENTIFIC LABORATORIES		333	102	23%	435
DESOTO MEMORIAL HOSPITAL CLINICAL LABORATORY	3	331	100	23%	434
SOUTHEAST ALABAMA MEDICAL CENT		390	42	10%	432
LUMINUS DIAGNOSTICS		297	124	29%	421
MINUTECLINIC LLC #3703		358	52	13%	410
NEW YORK STATE ELR - NORTH SHORE LONG ISLAND JEWISH HEALTH		364	23	6%	387
ORLANDO VETERANS AFFAIRS MEDICAL CENTER		112	265	70%	377
QUEST DIAGNOSTICS NICHOLS INSTITUTE	5	351	17	5%	373
NEW YORK STATE ELR - NYU HOSPITALS CENTER CLINICAL LABORATORIES		350	12	3%	362
PHYSICIANS STAT LAB		134	225	63%	359
LABCORP	1	79	273	77%	353

COVID-19: testing by laboratory

Data through Aug 8, 2020 verified as of Aug 9, 2020 at 09:25 AM

Data in this report are provisional and subject to change.

The numbers in the table below represent the number for whom test results were received by the Department of Health. A person can be tested by more than one laboratory and can have both positive and negative results. **Therefore, the sum of the numbers in each column will be larger than the total number of people tested.**

Reporting lab	Inconclusive	Negative	Positive	Percent positive	Total
INFORM DIAGNOSTICS		349	2	1%	351
CLARITY LABS		294	49	14%	343
HOLY CROSS HOSPITAL LABORATORY			342	100%	342
MEMORIAL PEMBROKE 24/7 CARE CENTER		251	90	26%	341
NEW YORK STATE ELR - LENCO MEDICAL LABORATORY		322	13	4%	335
DYNIX DIAGNOSTICS		187	135	42%	322
MARTIN MEMORIAL LABORATORY AT ST LUCIE WEST		275	46	14%	321
DAVITA LABS		290	26	8%	316
UNITED CLINICAL LABORATORY LLC		2	313	99%	315
UAB HIGHLANDS LABORATORY		307	3	1%	310
NEW YORK STATE ELR - DEPARTMENT OF CLINICAL LABS		301	5	2%	306
LAB CORP	1	120	180	60%	301
ECCOLAB GROUP	1	75	221	74%	297
NORTH FLORIDA PEDIATRICS-TALLAHASSEE		269	24	8%	293
AVECINA MEDICAL SOUTHSIDE		153	132	46%	285
FLORIDA LABORATORY ANALYSIS		98	179	65%	277
JAY HOSPITAL CLINICAL LABORATORY		206	67	25%	273
MEDARBOR DIAGNOSTICS		1	262	100%	263
ATLANTIS URGENT CARE		237	14	6%	251
NITE LITE PEDIATRICS		163	85	34%	248
GENESIS REFERENCE LABORATORIES		1	243	100%	244
FLO-MEDILAB SERVICES		80	156	66%	236
THERADOC		150	85	36%	235
NCF DIAGNOSTICS & DNA TECHNOLOGIES	10	14	206	90%	230
CORE DIAGNOSTIC LABORATORIES LLC		174	55	24%	229
TALLAHASSEE PRIMARY CARE ASSOCIATES		219	9	4%	228
EXPRESS GENE MOLECULAR DIAGNOSTIC LABORATORY		2	223	99%	225
BAPTIST MD ANDERSON CANCER CENTER		223			223
ASCEND CLINICAL		215	4	2%	219
LABCORP TAMPA	1	22	191	89%	214
MEDSCAN LABORATORY INC		136	76	36%	212
BIOCERNA LLC	8	153	49	23%	210
SMA SPECIALITY MEDICAL LAB		61	144	70%	205
TENNESSEE DOH - NASHVILLE	2	183	19	9%	204
SUNRISE MEDICAL LABORATORIES		151	52	26%	203
VAMC WEST PALM LAB		5	195	98%	200
AVECINA MEDICAL JULINGTON		95	104	52%	199
HENDRY REGIONAL MEDICAL CENTER		2	196	99%	198
HOLIDAY CVS LLC		196	2	1%	198
ADVENTHEALTH LAB			197	100%	197
FLAGLER HOSPITAL	4	17	176	89%	197
ST CLOUD REGIONAL MEDICAL CENTER		126	68	35%	194
HOLMES REGIONAL MEDICAL CENTER		3	191	98%	194
UNKNOWN		13	179	93%	192
ASSOCIATED PATHOLOGISTS, LLC		146	43	23%	189
SANFORD REFERENCE LAB		179	5	3%	184

COVID-19: testing by laboratory

Data through Aug 8, 2020 verified as of Aug 9, 2020 at 09:25 AM

Data in this report are provisional and subject to change.

The numbers in the table below represent the number for whom test results were received by the Department of Health. A person can be tested by more than one laboratory and can have both positive and negative results. **Therefore, the sum of the numbers in each column will be larger than the total number of people tested.**

Reporting lab	Inconclusive	Negative	Positive	Percent positive	Total
VETERANS AFFAIRS MEDICAL CENTER LAB		2	178	99%	180
PATHGROUP LABS LLC		90	89	50%	179
NEW YORK STATE ELR - NEW YORK PRESBYTERIAN HOSPITAL CUMC CLINICAL		162	13	7%	175
NCH HEALTHCARE BONITA		113	60	35%	173
HOLIDAY CVS LLC DBA CVS PHARMACY #5154		167	5	3%	172
TEMPUS CLINICAL LABORATORY	1	147	23	13%	171
BAY PINES VAMC CLINICAL LABORATORY		4	164	98%	168
GENESIS MEDICAL LABORATORY MIAMI FL.		78	86	52%	164
NEW YORK STATE ELR - MOUNT SINAI LABORATORY		154	8	5%	162
LABTECH DIAGNOSTIC		87	73	46%	160
NEW YORK STATE ELR - NEW YORK HOSPITAL LABORATORIES	1	152	6	4%	159
QUALITOX LABORATORIES		96	56	37%	152
MAVERICK LABS		54	98	64%	152
FLORIDA HOSPITAL WAUCHULA		81	70	46%	151
JAMES A. HALEY VETERANS MICRO LAB			150	100%	150
FLORIDA WOMAN CARE LABORATORY LLC		129	20	13%	149
EUROFINS NTD, LLC		121	25	17%	146
UAB UNIVERSITY OF ALABAMA HOSPITAL LAB		138	6	4%	144
GESSLER CLINIC			144	100%	144
PHAROS HEALTH		69	74	52%	143
CENTRA CARE		21	122	85%	143
WUESTHOFF REF LABORATORY			141	100%	141
BUREAU OF CLINICAL LABORATORIES		119	22	16%	141
SANTA ROSA MEDICAL CENTER		1	138	99%	139
NEO GENOMICS - FORT MYERS	1	134	4	3%	139
MOLECULAR INFECTIOUS DISEASES		134	4	3%	138
PREMIER MEDICAL LABORATORY SERVICES		1	137	99%	138
C.W. BILL YOUNG VA MEDICAL CENTER		4	133	97%	137
ACUTIS DIAGNOSTICS	1	107	23	18%	131
INTEGRATED REGIONAL LABORATORIES		119	12	9%	131
MEMPHIS PATHOLOGY LABORATORY	1	124	5	4%	130
BMHSI-AEL MICROBIOLOGY LABORATORY	2	102	24	19%	128
ARCPPOINT LABS - FORT MYERS		78	48	38%	126
ASAP LAB LLC		90	32	26%	122
BAYA URGENT CARE			122	100%	122
LEHIGH REGIONAL MEDICAL CENTER LAB		106	15	12%	121
NEW YORK STATE ELR - ENZO CLINICAL LABS INC		117	1	1%	118
AMERICAN PATHOLOGY PARTNERS		117	1	1%	118
VAMC BAY PINES		1	114	99%	115
PALM BEACH COUNTY HEALTH DEPT LAB		113	2	2%	115
MICROGEN DX		2	111	98%	113
ALLIED HEALTH FORT PIERCE		112			112
LEON MEDICAL CENTER		7	102	94%	109
UR MEDICINE LABS- CENTRAL LABORATORY		106	2	2%	108
MEDICAL DIAGNOSTICS LABORATORIES,INC		17	90	84%	107
ST JUDE CHILDREN'S RESEARCH HOSPITAL		95	11	10%	106

COVID-19: testing by laboratory

Data through Aug 8, 2020 verified as of Aug 9, 2020 at 09:25 AM

Data in this report are provisional and subject to change.

The numbers in the table below represent the number for whom test results were received by the Department of Health. A person can be tested by more than one laboratory and can have both positive and negative results. **Therefore, the sum of the numbers in each column will be larger than the total number of people tested.**

Reporting lab	Inconclusive	Negative	Positive	Percent positive	Total
MILLENNIUM LAB SERVICES			106	100%	106
ROSEN MEDICAL CENTER		93	12	11%	105
FLORIDA HOSPITAL HEARTLAND MED CTR LAKE PLACID		73	31	30%	104
SPARROW HEALTHCARE	2	1	100	97%	103
AMELIA URGENT CARE		5	97	95%	102
STEWART REFERENCE LABORATORY		4	97	96%	101
ARCPOINT LABS OF WEST PALM BEACH			98	100%	98
BAPTIST HEALTH SOUTH FLORIDA		4	90	96%	94
DIAGNOSTIC SOLUTIONS		3	90	97%	93
USAFSAM/PHE		23	69	75%	92
SACRED HEART HOSPITAL ON THE GULF		46	46	50%	92
IRL MARKET LAB ALACHUA		61	31	34%	92
MACDILL AFB HOSPITAL		79	10	11%	89
CENTRACARE		1	87	99%	88
GENETWORKX		15	72	83%	87
FLORIDA COMMUNITY HEALTH CENTERS INC			87	100%	87
MARTIN MEMORIAL MEDICAL CENTER LAB		12	74	86%	86
ADVENT HEALTH -TAMPA		66	20	23%	86
HEALTH FIRST-HOLMES REGIONAL			81	100%	81
VAMC LAKE CITY		51	30	37%	81
TOM LEE COMMUNITY HEALTH CENTER		3	77	96%	80
ADVENTHEALTH CENTRA CARE OVIEDO		22	56	72%	78
GARCIA CLINICAL LABORATORY		1	77	99%	78
AVERO DIAGNOSTICS		52	24	32%	76
FAST TRACK URGENT CARE CENTER			75	100%	75
PRIVA PATH LABS			74	100%	74
EMERGENCY PHYSICIANS MEDICAL CENTER			74	100%	74
HOLIDAY CVS LLC DBA CVSPHARMACY #5155		73			73
MID-FLORIDA PATHOLOGY		50	23	32%	73
MAYO CLINIC LABS - ROCHESTER MAIN CAMPUS		71	1	1%	72
PACIFIC ANALYTICS			71	100%	71
BAYCARE HEALTH SYSTEM		1	69	99%	70
CENTRAL FLORIDA HEALTH CARE		46	23	33%	69
Highlands Regional Hospital		63	6	9%	69
HOLY CROSS HOSPITAL		1	67	99%	68
VA MEDICAL CENTER		7	61	90%	68
BAYFRONT HEALTH BROOKSVILLE			68	100%	68
DYNAMIC MEDICAL USA			67	100%	67
QPS, LLC		66	1	1%	67
AEL- MEMPHIS		17	50	75%	67
HOSPITAL FOR SPECIAL SURGERY		65	1	2%	66
VAMC GAINESVILLE		2	64	97%	66
AMELIA EXPRESS CARE		2	61	97%	63
DAVITA LABORATORY SERVICES		48	14	23%	62
REFUAH HEALTH CENTER LABORATORY		59			59
ADVENT HEALTH CENTRA CARE: WATERFORD LAKES		23	35	60%	58

COVID-19: testing by laboratory

Data through Aug 8, 2020 verified as of Aug 9, 2020 at 09:25 AM

Data in this report are provisional and subject to change.

The numbers in the table below represent the number for whom test results were received by the Department of Health. A person can be tested by more than one laboratory and can have both positive and negative results. **Therefore, the sum of the numbers in each column will be larger than the total number of people tested.**

Reporting lab	Inconclusive	Negative	Positive	Percent positive	Total
FINLAY CLINICAL LABORATORY		24	34	59%	58
MORTON PLANT HOSPITAL/LAB		1	56	98%	57
GENE BY GENE			56	100%	56
NEW YORK STATE ELR - WADSWORTH HEALTH CENTER		52	3	5%	55
NAVY HOSPITAL			55	100%	55
MORTON PLANT HOSPITAL			55	100%	55
BROWARD HEALTH MEDICAL CENTER		1	53	98%	54
FLORIDA CLINICAL LABORATORY-BIOREFERENCE LABORATORIES		10	44	81%	54
USA HEALTH UNIVERSITY HOSPITAL CLINICAL LABORATORY		51	1	2%	52
SARASOTA CO. HEALTH DEPT # 58		40	11	22%	51
FISHERMENS HOSPITAL CLINICAL LAB		48	2	4%	50
NEW YORK STATE ELR - EMPIRECITY LABORATORIES		42	8	16%	50
NIGHT LITE PEDIATRICS URGENT CARE		20	29	59%	49
ARTHREX MEDICAL CENTER		28	21	43%	49
P4 DIAGNOSTIX LABORATORY NETWORK		1	48	98%	49
BAYCARE LAB		1	48	98%	49
MILLENIUM PHYSICIANS GROUP			49	100%	49
INTEGRITY LABORATORIES			49	100%	49
CLINICAL REFERENCE LABORATORY		45	4	8%	49
OPTUM LABS LLC		2	46	96%	48
HURLBURT FIELD CLINIC		23	24	51%	47
SOLARIS DIAGNOSTICS		2	45	96%	47
AMERICAN RESEARCH LABS		1	46	98%	47
SHORELINE PHYSICIAN GROUP			47	100%	47
ALLSOUTH URGENT CARE			47	100%	47
H LEE MOFFITT CANCER CENTER MICRO		46			46
VHA PUBLIC HEALTH REFERENCE LABORATORY- PALO ALTO		27	19	41%	46
HEALTHLINK DIAGNOSTIC LABORATORIES		1	44	98%	45
PROVIDENCE HOSPITAL LABORATORY		43	2	4%	45
ADVENT HEALTH CENTRA CARE LONGWOOD		1	44	98%	45
LABCORP BIRMINGHAM	1	4	40	89%	45
325TH MEDICAL GROUP			44	100%	44
QUEST TAMPA (NEW YORK ELR)		34	10	23%	44
QUEST DIAGNOSTICS-N ST PETERSBURG-5TH			43	100%	43
ACCU REFERENCE MEDICAL LAB			43	100%	43
NAVAL HOSPITAL - JACKSONVILLE		1	42	98%	43
LAB CORP TAMPA			42	100%	42
FULGENT GENETICS	1	21	20	48%	42
BAYFRONT HEALTH ER PINELLAS PARK		18	23	56%	41
GULF COAST MOLECULAR LABORATORIES		13	28	68%	41
SEBASTIAN RIVER MEDICAL CENTER		11	30	73%	41
NEW YORK STATE ELR - MONTEFIORE MEDICAL CENTER LABORATORIES - MOSES		34	7	17%	41
FLORIDA HOSPITAL NEW SMYRNA		4	37	90%	41
DEPARTMENT OF VETERANS AFFAIRS JAMES A. HALEY VETERANS HOSPITAL			40	100%	40
MIAMI VA HEALTHCARE SYSTEM			40	100%	40
DOCTOR'S MEMORIAL HOSPITAL		2	38	95%	40

COVID-19: testing by laboratory

Data through Aug 8, 2020 verified as of Aug 9, 2020 at 09:25 AM

Data in this report are provisional and subject to change.

The numbers in the table below represent the number for whom test results were received by the Department of Health. A person can be tested by more than one laboratory and can have both positive and negative results. **Therefore, the sum of the numbers in each column will be larger than the total number of people tested.**

Reporting lab	Inconclusive	Negative	Positive	Percent positive	Total
EAST MANATEE FAMILY	1		39	98%	40
RCA LABORATORY SERVICES, LLC		10	30	75%	40
AVELLINO LAB USA, INC		38	2	5%	40
EGLIN REGIONAL MEDICAL CENTER		4	35	90%	39
STAGEZERO LIFE SCIENCES INC		34	5	13%	39
NEW YORK STATE ELR - KALEIDA HEALTH CENTER FOR LABORATORY		35	4	10%	39
LAB CORP RTP	1	2	34	92%	37
CAREMOUNT MEDICAL - PATHOLOGY		36			36
FAST TRACK URGENT CARE CENTER - CARROLLWOOD			36	100%	36
NEW PLANT CITY FAMILY CARE		13	23	64%	36
GENPATH			35	100%	35
ST. CLOUD MEDICAL GROUP		35			35
IRL		4	31	89%	35
JEFFERY WEINZWEIG			35	100%	35
SCIONLAB SERVICES LLC		28	7	20%	35
NEW YORK STATE ELR - QUEST DIAGNOSTICS NICHOLS		32	2	6%	34
FAWCETT MEMORIAL HOSPITAL-LAB		1	33	97%	34
DESOTO MEMORIAL HOSPITAL LAB			33	100%	33
Quest Diag Unspecfd		8	25	76%	33
UNKNOWN - BAD FACILITY CODE		2	31	94%	33
US BIOTEK LABORATORIES			33	100%	33
EXPERTUS LABORATORIES INC		11	21	66%	32
HEALTH FIRST-PALM BAY			32	100%	32
EXACT SCIENCES LABORATORIES, LLC		9	23	72%	32
MEDICAL DIAGNOSTIC LAB		1	31	97%	32
LABORATORY CORP OF AMERICA	1	9	21	68%	31
SMA SPECIALTY MEDICAL LAB		1	30	97%	31
NORTH FLORIDA PEDIATRICS-LAKE CITY			31	100%	31
QUEST DIAGNOSTICS-VERO BEACH-37TH ST		31			31
ST. MARYS MEDICAL CENTER		1	30	97%	31
ST VINCENT'S BIRMINGHAM LABORATORY		31			31
NEW YORK STATE ELR - WHITE PLAINS HOSPITAL CENTER LAB		31			31
NXGEN MDX		18	12	40%	30
CAPITAL REGIONAL MEDICAL CENTER		1	29	97%	30
CLINICAL RESEARCH SEQUENCING PLATFORM			30	100%	30
LABORATORY SPECIALISTS OF MICHIGAN			30	100%	30
MOBILE INFIRMARY MED CENTER PATH LAB		28	2	7%	30
FINLAY CLINICAL LABORATORY INC		26	3	10%	29
P4CLINICAL	3	2	24	83%	29
NEW YORK STATE ELR - NEWYORK-PRESBYTERIAN/QUEENS DIAGNOSTIC		28	1	3%	29
DICKERT		26	3	10%	29
TRADITION MEDICAL CENTER LABORATORY		9	20	69%	29
HUNTSVILLE HOSPITAL LABORATORY		22	7	24%	29
QUEST DIAGNOSTICS NICHOLS INSTITUTE- LPP		3	25	89%	28
QUEST DIAGNOSTIC INC	1	3	24	86%	28
BLOCK, NATION, CHASE, AND SMOLEN FAMILY MEDICINE		17	11	39%	28

COVID-19: testing by laboratory

Data through Aug 8, 2020 verified as of Aug 9, 2020 at 09:25 AM

Data in this report are provisional and subject to change.

The numbers in the table below represent the number for whom test results were received by the Department of Health. A person can be tested by more than one laboratory and can have both positive and negative results. **Therefore, the sum of the numbers in each column will be larger than the total number of people tested.**

Reporting lab	Inconclusive	Negative	Positive	Percent positive	Total
BIOREFERENCE LABORATORIES		1	27	96%	28
LAB PLUS, LLC AT SAINT THOMAS WEST HOSPITAL		20	8	29%	28
LABFIRST - DEPARTMENT OF PATHOLOGY		26	1	4%	27
NEXT MOLECULAR ANALYTICS		1	26	96%	27
CDC		17	9	35%	26
INTERLAB		1	25	96%	26
SUNCOAST LABS			26	100%	26
DOH-WEST PALM BEACH BRANCH LABORATORY			26	100%	26
ASSOCIATED CLINICAL LABORATORIES		25	1	4%	26
SANFORD LABORATORIES		24	2	8%	26
ADVENTHEALTH CENTRA CARE SANFORD		6	19	76%	25
CAPE CANAVERAL HOSPITAL			25	100%	25
BAYFRONT		21	4	16%	25
MY CLINICAL LAB			25	100%	25
GENESIS LABORATORY MANAGEMENT		1	24	96%	25
ADVENT HEALTH CENTRA CARE		4	21	84%	25
QDX PATHOLOGY SERVICES		15	10	40%	25
KENDALL REGIONAL MEDICAL CENTER LAB	1		24	96%	25
CHILDREN'S HOSPITAL OF ALABAMA		24			24
NEW YORK STATE ELR - STONY BROOK UNIVERSITY MEDICAL CENTER		21	3	13%	24
GRAVITY DIAGNOSTICS		14	10	42%	24
ST. ANTHONY'S HOSPITAL			24	100%	24
RDX BIOSCIENCE,			24	100%	24
NEW YORK STATE ELR - CATHOLIC HEALTH SYSTEM DEPT LABORATORY		24			24
QUEST DIAGNOSTICS INC.			24	100%	24
CITRUS MEMORIAL HEALTH SYSTEM LAB		2	21	91%	23
PRIDE DIAGNOSTICS		20	3	13%	23
FLORIDA MEDICAL CLINIC		1	22	96%	23
LABORATORY DYNAMICS		20	3	13%	23
NORTH FLORIDA/SOUTH GEORGA VETERANS HEALTH SYSTEM			23	100%	23
AURORA DIAGNOSTICS BERNHARDT LABORATORIES PATHOLOGY SERVICE		22			22
CAYUGA MEDICAL CENTER AT ITHACA		19	3	14%	22
POPLAR HEALTHCARE PLLC	1	10	11	50%	22
LABCORP OF AMERICA		8	14	64%	22
UNIVERSITY HEALTH SYSTEM INC		19	3	14%	22
PENNSYLVANIA DEPT OF HEALTH		19	3	14%	22
PALM BAY HOSPITAL		1	21	95%	22
PATRICK AIR FORCE BASE		1	20	95%	21
NEW YORK STATE ELR - UNIVERSITY HOSPITAL, STONY BROOK SOUTHAMPTON		21			21
THE CENTER FOR URGENT CARE		3	18	86%	21
GRAVITY DIAGNOSTICS, LLC		8	13	62%	21
CENTRA CARE - WATERFORD LAKES		2	19	90%	21
LAB			21	100%	21
BROWARD HEALTH CORAL SPRINGS EPIDEMIOLOGY DEPT			20	100%	20
CURATIVE LABS			20	100%	20
ASSOCIATED PATHOLOGISTS		16	4	20%	20

COVID-19: testing by laboratory

Data through Aug 8, 2020 verified as of Aug 9, 2020 at 09:25 AM

Data in this report are provisional and subject to change.

The numbers in the table below represent the number for whom test results were received by the Department of Health. A person can be tested by more than one laboratory and can have both positive and negative results. **Therefore, the sum of the numbers in each column will be larger than the total number of people tested.**

Reporting lab	Inconclusive	Negative	Positive	Percent positive	Total
MIAMI BEACH COMMUNITY HEALTH CENTER			20	100%	20
ST. CLOUD HOSPITAL		20			20
APP-UNIPATH, LLC		19	1	5%	20
SMA LAB		4	16	80%	20
AMMON LABS		10	9	47%	19
ARCPOINT LABS OF TAMPA		1	18	95%	19
MAYO CLINIC LABS - ROCHESTER SUPERIOR DRIVE		2	17	89%	19
INTEGRATED REGIONAL LABORATORIES - LARGO			19	100%	19
DIAGNOSTIC LABORATORY OF OKLAHOMA		18	1	5%	19
VA		15	4	21%	19
VENICE REGIONAL MEDICAL LAB SERVICES			19	100%	19
MED HEALTH SERVICES		18	1	5%	19
ADVENT HEALTH FISH MEMORIAL		2	17	89%	19
INTERCOASTAL MEDICAL GROUP			18	100%	18
NEW YORK STATE ELR - WESTCHESTER MEDICAL CENTER		18			18
LECONTE MEDICAL CENTER LAB		14	4	22%	18
FIRST CHOICE URGENT CARE			18	100%	18
VAMC			18	100%	18
STONE WASH CLINICAL LABORATORIES		2	16	89%	18
VIERA HOSPITAL			18	100%	18
BAY MEDICAL CENTER SACRED HEART HEALTH SYSTEM		3	15	83%	18
CBS LABORATORY		1	17	94%	18
PALO ALTO VA MEDICAL CENTER		1	17	94%	18
WUESTHOFF MEMORIAL HOSPITAL			18	100%	18
CLEVELAND CLINIC FOUNDATION		9	8	47%	17
NEW YORK STATE ELR - BROOKDALE UNIVERSITY HOSPITAL		16	1	6%	17
DOCTORS MEMORIAL HOSPITAL		8	9	53%	17
WATSON CLINIC LLP SOUTH			17	100%	17
PARRISH MEDICAL CENTER		1	16	94%	17
ST FRANCIS HOSPITAL		14	3	18%	17
NEW YORK STATE ELR - QUEST DIAGNOSTICS INCORPORATED		14	3	18%	17
LIFEBRITE	1		16	94%	17
TGH		1	15	94%	16
SEVEN RIVERS REGIONAL MEDICAL CENTER		4	12	75%	16
GENESIS DIAGNOSTICS			16	100%	16
WUESTHOFF MEDICAL CENTER-MELBOURNE			16	100%	16
MOLECULAR TESTING LABS			16	100%	16
MADISON CORE LABORATORIES		15	1	6%	16
MOLECULAR DIAGNOSTICS			16	100%	16
NEW YORK STATE ELR - LENOX HILL HOSPITAL		13	2	13%	15
FLORIDA DEPARTMENT OF HEALTH		10	5	33%	15
QUEST DIAGNOSTICS INCORPORATED			15	100%	15
NEW YORK STATE ELR - WILSON MEMORIAL REGIONAL MEDICAL CENTER		14	1	7%	15
LABCORP INC		2	13	87%	15
DIATHERIX		13	2	13%	15
CENTRA CARE CONWAY			15	100%	15

COVID-19: testing by laboratory

Data through Aug 8, 2020 verified as of Aug 9, 2020 at 09:25 AM

Data in this report are provisional and subject to change.

The numbers in the table below represent the number for whom test results were received by the Department of Health. A person can be tested by more than one laboratory and can have both positive and negative results. **Therefore, the sum of the numbers in each column will be larger than the total number of people tested.**

Reporting lab	Inconclusive	Negative	Positive	Percent positive	Total
JACKSON HEALTH SYSTEM			15	100%	15
NORTH SHORE UNIVERSITY HOSPITAL LABORATORY		14	1	7%	15
QUEST DIAGNOSTICS NICHOLS INSTITUTE - SJC (LPP)		10	5	33%	15
QUESTDIAGNOSTICS INCORPORATED		1	14	93%	15
IPSUM DIAGNOSTICS			15	100%	15
NEW YORK STATE ELR - ROCHESTER GENERAL HOSPITAL LABORATORY		14	1	7%	15
XPRESS WELLNESS URGENT CARE			14	100%	14
PARK WEST MEDICAL CENTER		13	1	7%	14
OUT OF STATE		14			14
TIDE LABORATORIES		4	10	71%	14
WHITE WILSON MEDICAL CENTER CLINIC			14	100%	14
GOLDEN GATE FAMILY CLINIC			14	100%	14
MILLENNIUM PHYSICIAN GROUP LCC			14	100%	14
SUNTREE INTERNAL MEDICINE		14			14
HEALTH CENTRAL HOSPITAL			14	100%	14
HEALTH FIRST CAPE CANAVERAL HOSPITAL			14	100%	14
BAPTIST SOUTH MEDICAL CENTER		2	11	85%	13
NEW YORK STATE ELR - ERIE COUNTY MEDICAL CTR CLINICAL LABS		13			13
XERA MED RESEARCH			13	100%	13
SOUTHEAST FAMILY HEALTHCARE CENTER			13	100%	13
LABSTAT		1	12	92%	13
LABCORP - CLEARWATER		3	10	77%	13
DEPARTMENT OF VETERANS AFFAIRS MEDICAL CENTER			13	100%	13
MEDCOMP SCIENCES			13	100%	13
NEW YORK STATE ELR - BRONX LEBANON HOSPITAL-MEDICAL CENTER		12	1	8%	13
SUNQUEST		2	11	85%	13
ORLANDO HEALTH		2	11	85%	13
NORTH OKALOOSA MEDICAL CENTER			13	100%	13
POARCH BANC CREEK INDIANS TRIBAL HEALTH DEPARTMENT			13	100%	13
TEN HEALTHCARE		2	10	83%	12
FHMG_CTR FOR SENIOR HEALTH		11	1	8%	12
HEALTH FIRST-VIERA HOSPITAL			12	100%	12
UVMCM MICROBIOLOGY		12			12
BROWARD DIALYSIS			12	100%	12
PROTEUS MOLECULAR AND CLINICAL LAB		8	4	33%	12
REDITUS LABORATORIES			12	100%	12
CLARITY LAB SOLUTIONS		3	9	75%	12
SELECT LABORATORIES MARION COUNTY, LLC.			12	100%	12
DOH		1	11	92%	12
INTEGRITY LABORATORIES, LLC		5	7	58%	12
PRECISION HEALTH SOLUTIONS LAB			12	100%	12
FLORIDA DEPT OF HEALTH		4	8	67%	12
TOTAL RENAL LABORATORIES INC		7	5	42%	12
BAYFRONT HEALTH SPRING HILL			12	100%	12
ADVANCED URGENT CARE		10	2	17%	12
FLORIDA COMMUNITY HEALTH CENTER OF ST. LUCIE			11	100%	11

COVID-19: testing by laboratory

Data through Aug 8, 2020 verified as of Aug 9, 2020 at 09:25 AM

Data in this report are provisional and subject to change.

The numbers in the table below represent the number for whom test results were received by the Department of Health. A person can be tested by more than one laboratory and can have both positive and negative results. **Therefore, the sum of the numbers in each column will be larger than the total number of people tested.**

Reporting lab	Inconclusive	Negative	Positive	Percent positive	Total
DELRAY MEDICAL CENTER LAB			11	100%	11
TRUGENX			11	100%	11
MAGNOLIA DIAGNOSTIC			11	100%	11
LAB INTERMARKET FACILITY LAB			11	100%	11
BOND CLINIC			11	100%	11
ESCAMBIA COMMUNITY CLINIC			11	100%	11
FHMG LAKE MARY PEDS		10	1	9%	11
NIGHT LITE PEDIATRICS WINTER GARDEN		7	4	36%	11
NEW YORK STATE ELR - SARATOGA HOSPITAL LABORATORY		11			11
AMERICAN HEALTH ASSOCIATES OF TAMPA		2	9	82%	11
AMERICAN ESOTERIC LABORATORIES			11	100%	11
INDIAN RIVER MEDICAL CENTER		11			11
ADVENTHEALTH PALM COAST			11	100%	11
UPMC CHAUTAUQUA AT WCA LABORATORY		11			11
BAYCARE OUTREACH LABORATORY SERVICES		1	9	90%	10
NORTH FLORIDA PEDIATRICS		1	9	90%	10
NEW YORK STATE ELR - NEW YORK CITY DEPARTMENT OF HEALTH & MENTAL		9	1	10%	10
PERSONALIZED GENETIC TESTING			10	100%	10
BROWARD HEALTH CARE			10	100%	10
QUEST INFECTIOUS DISEASE	1	5	4	40%	10
VENICE REGIONAL MEDICAL CENTER			10	100%	10
LAKE BALDWIN CBOC		9	1	10%	10
LABCORP - MIAMI		4	6	60%	10
CORE LABORATORY		1	9	90%	10
MEDICAL LABORATORY DIAGNOSTICS			10	100%	10
NEW JERSEY DEPARTMENT OF HEALTH COMMUNICABLE DISEASE SERVICE		3	7	70%	10
NEW YORK STATE ELR - CATHOLIC HEALTH SERVICES REGIONAL LABORATORY		8	2	20%	10
SELECT REFERENCE LABORATORIES, LLC			10	100%	10
JACKSON NORTH MEDICAL CENTER		1	9	90%	10
PARKWEST MEDICAL CENTER		9	1	10%	10
BAYFRONT HEALTH PORT CHARLOTTE			10	100%	10
WESTPAC LABS			9	100%	9
KEYS MEDICAL GROUP			9	100%	9
FLORIDA HOSPITAL LABS			9	100%	9
ADVENT HEALTH SEBRING			9	100%	9
NEW YORK STATE ELR - VASSAR BROTHERS MEDICAL CENTER LABORATORY		9			9
EAST ALABAMA MEDICAL CENTER LABORATORY		6	3	33%	9
NEW YORK STATE ELR - GOOD SAMARITAN HOSPITAL LABORATORY		9			9
LEON CHD		9			9
MICHIGAN DEPARTMENT OF HEALTH AND HUMAN SERVICES			9	100%	9
MINUTE CLINIC INCORPORATE		8	1	11%	9
DYNAMIC DNA LAB		1	8	89%	9
BAY CARE OCCUPATIONAL CLINIC			9	100%	9
CLINICAL PATHOLOGY LABS		1	8	89%	9
NEW YORK STATE ELR - LOURDES HOSPITAL INC		9			9
ELLENTON URGENT CARE			9	100%	9

COVID-19: testing by laboratory

Data through Aug 8, 2020 verified as of Aug 9, 2020 at 09:25 AM

Data in this report are provisional and subject to change.

The numbers in the table below represent the number for whom test results were received by the Department of Health. A person can be tested by more than one laboratory and can have both positive and negative results. **Therefore, the sum of the numbers in each column will be larger than the total number of people tested.**

Reporting lab	Inconclusive	Negative	Positive	Percent positive	Total
HUNTINGTON HOSPITAL LABORATORY		8	1	11%	9
TYNDALL AFB			9	100%	9
INTERNAL LAB		6	3	33%	9
CONSOLIDATED LAB SERVICES		8			8
DOCTOR'S IN HOUSE LAB			8	100%	8
THE COMMONWEALTH OF MASSACHUSETTS			8	100%	8
BAYCARE LABORATORIES			8	100%	8
ST VINCENTS MEDICAL CENTER RIVERSIDE NURSING			8	100%	8
BAY PINES VA		1	7	88%	8
NORTH CAROLINA DEPARTMENT OF HEALTH & HUMAN SERVICES			8	100%	8
NEW YORK STATE ELR - JAMES J PETERS VA MEDICAL CENTER		6	2	25%	8
NEW YORK STATE ELR - NORTH CENTRAL BRONX HOSP		7	1	13%	8
SPORTS DRUG TESTING LABORATORY			8	100%	8
STATE LAB		1	7	88%	8
BOCA BIOLISTICS REFERENCE LABORATORY			8	100%	8
DEVANSH LAB WERKS INC		6	2	25%	8
UMHC/SYLVESTER AT KENDALL		1	7	88%	8
WOLFSON (USE BAPTIST)			8	100%	8
GENEUS DIAGNOSTICS			8	100%	8
PROMEDICA LABORATORIES		7	1	13%	8
Diatherix Laboratories, LLC		2	6	75%	8
NEW YORK STATE ELR - ST PETER'S BENDER LABORATORY		8			8
PRATTVILLE BAPTIST HOSPITAL		7	1	13%	8
CENTRA CARE – SAND LAKE			8	100%	8
MIDWAY SPECIALTY CARE CENTER			8	100%	8
FLORIDA DEPARTMENT OF HEALTH IN LAKE COUNTY		3	4	57%	7
NO NAME		5	2	29%	7
NADAL PEDIATRICS - VICTORIA STREET (3385)			7	100%	7
BIOFIRE			7	100%	7
NORTHWELL HEALTH PLAINVIEW HOSPITAL LABORATORY		5	2	29%	7
AMELIA MEDICAL CARE			7	100%	7
NEW YORK STATE ELR - LABORATORY ALLIANCE OF CENTRAL NEW		7			7
LONGLEAF DIAGNOSTIC LABORATORIES		2	5	71%	7
NORTH BAY HOSPITAL			7	100%	7
PENSACOLA PEDIATRICS			7	100%	7
BAYONET POINT MEDICAL CENTER			7	100%	7
FLORIDA CLINICAL LAB			7	100%	7
ST CATHERINE OF SIENA HOSPITAL		7			7
WATSON CLINIC LLP MAIN			7	100%	7
ST VINCENT'S EAST LABORATORY		6	1	14%	7
FLORIDA DEPARTMENT OF HEALTH IN HILLSBOROUGH COUNTY			7	100%	7
SYLVESTER AT PLANTATION LABORATORY		6	1	14%	7
CLEVELAND CLINIC			7	100%	7
ROCKLEDGE			7	100%	7
HIGHLANDS MEDICAL CENTER		7			7
UNIVERSITY HOSPITAL - STONY BROOK EASTERN		7			7

COVID-19: testing by laboratory

Data through Aug 8, 2020 verified as of Aug 9, 2020 at 09:25 AM

Data in this report are provisional and subject to change.

The numbers in the table below represent the number for whom test results were received by the Department of Health. A person can be tested by more than one laboratory and can have both positive and negative results. **Therefore, the sum of the numbers in each column will be larger than the total number of people tested.**

Reporting lab	Inconclusive	Negative	Positive	Percent positive	Total
PECONIC BAY MEDICAL CENTER LABORATORY		6	1	14%	7
SOUTHEAST ALABAMA MEDICAL CENTER			7	100%	7
X-GENE MOLECULAR LABS		1	6	86%	7
NEW YORK STATE ELR - HUDSON VALLEY HOSPITAL CENTER LABORATORY		6	1	14%	7
ORMOND BEACH CENTRA CARE			7	100%	7
HEALTHMARK REGIONAL HOSPITAL LAB		3	4	57%	7
CANTON-POTSDAM HOSPITAL LABORATORY		7			7
NEW YORK PRESBYTERIAN - ALLEN HOSPITAL		7			7
LAKE CITY VETERANS HOSPITAL			7	100%	7
NORTHWEST FLORIDA COMMUNITY HOSPITAL		1	6	86%	7
LEE MEMORIAL LAB GULF COAST			6	100%	6
TAMIAMI LAB MILLENIUM			6	100%	6
TPCA CLINICAL LABORATORIES		3	3	50%	6
LEE MEMORIAL HEALTH PARK LAB			6	100%	6
CREATIVE TESTING SOLUTIONS			6	100%	6
LABORATORY OF FLORIDA			6	100%	6
STATEN ISLAND UNIVERSITY HOSPITAL-POUCH		6			6
ARCHBOLD MEMORIAL HOSPITAL/LAB		3	3	50%	6
MICHIGAN DEPARTMENT OF COMMUNITY HEALTH		1	5	83%	6
TRUE HEALTH DIAGNOSTICS		1	5	83%	6
FLORIDA WOMAN CARE LABORATORY			6	100%	6
LABCORP NEW PORT RICHEY			6	100%	6
LONGWOOD FAMILY PRACTICE		6			6
ST JOSEPH HOSPITAL		5	1	17%	6
PATHOGENIUS LABORATORIES		2	4	67%	6
SHELBY COUNTY HEALTH CARE CORPORATION		4	2	33%	6
CONNECTICUT DEPARTMENT OF HEALTH		5	1	17%	6
ST. JOSEPH HOSPITAL AND HEALTH CARE INC.			6	100%	6
EGL GENETIC DIAGNOSTICS		1	5	83%	6
MONTEFIORE NEW ROCHELLE HOSPITAL		6			6
PALM BEACH PATHOLOGY		4	2	33%	6
ADVENTHEALTH CENTRA CARE ORMOND BEACH			6	100%	6
NEW YORK STATE ELR - JAMAICA HOSPITAL MEDICAL CENTER		6			6
LEE COUNTY HEALTH DEPARTMENT		4	2	33%	6
ACH			6	100%	6
NEIGHBORHOOD MEDICAL CENTER		6			6
DOCTORS MEMORIAL FAMILY MEDICINE			6	100%	6
ST ELIZABETH MEDICAL CENTER LABORATORY		6			6
CHEMISYS LABORATORIES			5	100%	5
JFK MEDICAL CENTER NORTH LAB			5	100%	5
BROOKWOOD BAPTIST MEDICAL CENTER		5			5
LAKELAND REGIONAL HEALTH			5	100%	5
ADVENT HEALTH CENTRA CARE PALM COAST			5	100%	5
UPMC HEALTH SYSTEM		4	1	20%	5
DOH JACKSONVILLE CENTRAL LABORATORY		3	2	40%	5
MINUTECLINIC DIAGNOSTIC OF RHODE ISLAND, LLC #729		4	1	20%	5

COVID-19: testing by laboratory

Data through Aug 8, 2020 verified as of Aug 9, 2020 at 09:25 AM

Data in this report are provisional and subject to change.

The numbers in the table below represent the number for whom test results were received by the Department of Health. A person can be tested by more than one laboratory and can have both positive and negative results. **Therefore, the sum of the numbers in each column will be larger than the total number of people tested.**

Reporting lab	Inconclusive	Negative	Positive	Percent positive	Total
DALE MEDICAL CENTER		2	3	60%	5
ADVENTHEALTH PEDIATRICS/LAKE MARY PEDS		4	1	20%	5
NEW YORK STATE ELR - SOUTHSIDE HOSPITAL NORTHWELL HEALTH LABORATORY		4	1	20%	5
SUNCOAST COMMUNITY HEALTH CENTERS PEDIATRICS		1	4	80%	5
CHILDREN'S HOSPITAL OF PHILADELPHIA		5			5
UNKNOWN LAB			5	100%	5
LAB CORP OF AMERICA		1	4	80%	5
XRL SXF REF LAB		5			5
Cleveland Clinic Laboratories		1	4	80%	5
KEY PRIMARY CASE			5	100%	5
FHMG-FLORIDA HOSPITAL MEDICAL GROUP		3	2	40%	5
ADVENTHEALTH MEDICAL GROUP		4	1	20%	5
QUOTIENT SCIENCES			5	100%	5
BIOTECH			5	100%	5
TALLAHASSEE PRIMARY CARE ASSOC, PA		5			5
SPECIALITY LABORATORIES,INC		4	1	20%	5
AEL KNOXVILLE			5	100%	5
FRANCES WARDE MEDICAL LABORATORY		2	3	60%	5
TMH PHYSICIAN PARTNERS - MONTICELLO		5			5
THE VILLAGES CLINICAL LAB		4	1	20%	5
LABCORP - NAPLES			5	100%	5
LEHIGH VALLEY HOSPITAL		3	2	40%	5
LABCORP BURLINGTON CYTO		4	1	20%	5
ARNOT OGDEN MEDICAL CENTER LABORATORY		5			5
ST ANTHONY NORTH			5	100%	5
BROWARD COUNTY HEALTH DEPT.			5	100%	5
BOCA RATON REGIONAL HOSPITAL LAB			5	100%	5
FLOWERS HOSPITAL		1	4	80%	5
COMMUNITY HEALTH CENTER			5	100%	5
LAWTON CHILES HEALTH CENTER			4	100%	4
NEWYORK-PRESBYTERIAN/ LAWRENCE HOSPITAL LABORATORY		4			4
STATEN ISLAND UNIVERSITY HOSPITAL		4			4
ABBOTT			4	100%	4
INTERMARKET FACILITY			4	100%	4
PRECISION LABS LLC		1	3	75%	4
MANATEE PEDIATRICS			4	100%	4
OKLAHOMA STATE UNIVERSITY DIAGNOSTIC LAB			4	100%	4
BALDWIN PEDIATRICS			4	100%	4
LINCOLN MEDICAL AND MENTAL HEALTH CENTER		4			4
PATHGROUP			4	100%	4
ILLINOIS DEPT OF PUBLIC HEALTH LAB - SPRINGFIELD			4	100%	4
QUEST DIAGNOSTICS- MELBOURNE			4	100%	4
BEAUMONT LABORATORY			4	100%	4
BAY CARE			4	100%	4
NICHOLS INSTITUTE QUEST DIAGNOSTICS		2	2	50%	4
GENUS3		1	3	75%	4

COVID-19: testing by laboratory

Data through Aug 8, 2020 verified as of Aug 9, 2020 at 09:25 AM

Data in this report are provisional and subject to change.

The numbers in the table below represent the number for whom test results were received by the Department of Health. A person can be tested by more than one laboratory and can have both positive and negative results. **Therefore, the sum of the numbers in each column will be larger than the total number of people tested.**

Reporting lab	Inconclusive	Negative	Positive	Percent positive	Total
NEW YORK STATE ELR - SAMARITAN HOSPITAL LABORATORY		4			4
ADVENTHEALTH CENTRA CARE LAKE MARY			4	100%	4
QUEST DIAGNOSTIC INC TECHINICAL			4	100%	4
THOMAS JEFFERSON UNIVERSITY HOSPITAL		4			4
COASTAL LABORATORIES			4	100%	4
MEDLOGIC, LLC		1	3	75%	4
STATEN ISLAND UNIVERSITY HOSPITAL SEGUINE AVE		4			4
SOUTHWESTERN REGIONAL MEDICAL CENTER - TULSA		4			4
DOCTOR'S IN HOUSE LABORATORY			4	100%	4
PEDIATRIC HEALTH CARE ALLIANCE			4	100%	4
Covance Central Laboratory			4	100%	4
NEW HAMPSHIRE DEPARTMENT OF HEALTH AND HUMAN SERVICES		3	1	25%	4
ACHS		2	2	50%	4
GENUS DIAGNOSTICS			4	100%	4
FISHERMEN'S HOSPITAL			4	100%	4
NOAH CLINICAL LABORATORY			4	100%	4
DCH REGIONAL MEDICAL CENTER LABORATORY		4			4
METROPOLITAN HOSPITAL CENTER		4			4
DTR LABS		3	1	25%	4
NEW YORK STATE ELR - BROOKLYN HOSPITAL CENTER DOWNTOWN CAMPUS		4			4
MISSOURI DEPARTMENT OF HEALTH AND SENIOR SERVICES			4	100%	4
EXPRESS TESTING-ONE			4	100%	4
COVENIENT CARE MEDICAL CLINIC			4	100%	4
FINLAY C. LABORATORY		3	1	25%	4
IRL MARKET LAB			4	100%	4
DAVITA LABORATORY		4			4
COMMUNITY HEALTH OF SOUTH FLORIDA			4	100%	4
COLORADO DEPARTMENT OF PUBLIC HEALTH AND ENVIRONMENT			4	100%	4
VIRGINIA DIVISION OF CONSOLIDATED LABORATORIES			3	100%	3
PHYSICIANS STAT			3	100%	3
PENNSYLVANIA DEPARTMENT OF HEALTH BUREAU OF LABORATORIES			3	100%	3
INDIAN RIVER CHD VERO BEACH		2	1	33%	3
PALMS WEST HOSPITAL			3	100%	3
KEY WEST URGENT CARE, INC		3			3
ILLINOIS DEPARTMENT OF PUBLIC HEALTH			3	100%	3
DORAL URGENT CARE			3	100%	3
FLORIDA HOSPITAL			3	100%	3
NORTH NAPLES HOSPITAL RESPIRATORY THERAPY DEPARTMENT			3	100%	3
PUBLIC HEALTH LAB		3			3
QUEST DIAGNOSTIC			3	100%	3
ST. JOSEPH'S HOSPITAL NORTH			3	100%	3
QUATRACOR PLLC		3			3
JOHNS HOPKINS MEDICAL LABORATORIES		1	2	67%	3
SAMARITAN MEDICAL CENTER		3			3
BAYFRONT HEALTH PUNTA GORDA			3	100%	3
FAMILY HEALTH CENTERS OF SWF LABS			3	100%	3

COVID-19: testing by laboratory

Data through Aug 8, 2020 verified as of Aug 9, 2020 at 09:25 AM

Data in this report are provisional and subject to change.

The numbers in the table below represent the number for whom test results were received by the Department of Health. A person can be tested by more than one laboratory and can have both positive and negative results. **Therefore, the sum of the numbers in each column will be larger than the total number of people tested.**

Reporting lab	Inconclusive	Negative	Positive	Percent positive	Total
LABCORP DIAGNOSTICS-MIAMI		2	1	33%	3
WAKEMED		1	2	67%	3
AIM LABORATORIES			3	100%	3
VA OUTPATIENT			3	100%	3
BARONESS ERLANGER HOSPITAL		3			3
NORTH BROWARD HOSPITAL DISTRICT HEALTHCARE FOR THE HOMELESS			3	100%	3
VIRTUA VOORHEES HOSPITAL		3			3
TIMBER RIDGE LABORATORY			3	100%	3
NEW YORK STATE ELR - LONG ISLAND JEWISH MED CTR		3			3
BOZEMAN HEALTH DEACONESS HOSPITAL		3			3
COMMUNITY HEALTH NORTHWEST FLORIDA			3	100%	3
MHHS All Lab Subsection		3			3
CENTRAL FLORIDA HEALTH CARE INC			3	100%	3
PINELLAS COUNTY HEALTH DEPARTMENT		2	1	33%	3
WOODHULL MEDICAL AND MENTAL HEALTH CTR		3			3
ST LUKES HOSPITAL LABORATORY		2	1	33%	3
BAYCARE MEDICAL GROUP INC			3	100%	3
BRANCH MEDICAL CLINIC			3	100%	3
CENTRA CARE – LAKE NONA		1	2	67%	3
MIAMI CANCER INSTITUTE			3	100%	3
MALABAR/ADVENT CENTRA CARE			3	100%	3
DOH-TAMPA BRANCH LABORATORY (MLK BLVD)			3	100%	3
ASCENSION ST. VINCENT'S PRIMARY CARE			3	100%	3
WESLEY CHAPEL INTERNAL MEDICINE AND PEDIATRICS			3	100%	3
NEW YORK STATE ELR - ORANGE REGIONAL MEDICAL CENTER LABORATORY		3			3
JOE DIMAGGIO CHILDREN'S HOSPITAL		1	2	67%	3
LAKE WALES MEDICAL CENTER INC			3	100%	3
BAPTIST MEDICAL CENTER EAST		2	1	33%	3
NEW YORK STATE ELR - JACOBI MEDICAL CENTER		3			3
GULF COAST MEDICAL GROUP			3	100%	3
VA GULF COAST VETERANS HEALTH CARE SYSTEM			3	100%	3
BAYCARE OUTREACH LABORATORY HOSPITAL			3	100%	3
ALACHUA COUNTY HEALTH DEPARTMENT			3	100%	3
MARSHALL MEDICAL CENTER SOUTH LAB		2	1	33%	3
NAPHCARE, INC.			3	100%	3
HEALTH CARE LABORATORY SERVICES			3	100%	3
METHODIST MEDICAL CENTER		2	1	33%	3
ACCESS HEALTH CARE		2	1	33%	3
EISENHOWER ARMY MEDICAL CENTER			3	100%	3
MONTEFIORE ST LUKE'S CORNWALL HOSPITAL		2	1	33%	3
EMERGENCY MEDICAL CENTER			3	100%	3
NORTHSHORE UNIVERSITY HEALTHSYSTEM EVANSTON HOSPITAL LAB			3	100%	3
NORTHERN DUTCHESS HOSPITAL LABORATORY		3			3
JACKSON SOUTH COMMUNITY HOSPITAL LAB			3	100%	3
CONNECTDX			2	100%	2
SHELBY BAPTIST MEDICAL CENTER			2	100%	2

COVID-19: testing by laboratory

Data through Aug 8, 2020 verified as of Aug 9, 2020 at 09:25 AM

Data in this report are provisional and subject to change.

The numbers in the table below represent the number for whom test results were received by the Department of Health. A person can be tested by more than one laboratory and can have both positive and negative results. **Therefore, the sum of the numbers in each column will be larger than the total number of people tested.**

Reporting lab	Inconclusive	Negative	Positive	Percent positive	Total
JOHN D. ARCHBOLD MEM. HOSPITAL			2	100%	2
MAYO			2	100%	2
CELERION			2	100%	2
SPARROW CENTRAL LAB			2	100%	2
SSM HEALTH ST LOUIS MICROBIOLOGY LABORATORY		1	1	50%	2
ERIE COUNTY MEDICAL CTR CLINICAL LABS		2			2
BFT LAB			2	100%	2
LINCOLN DIAGNOSTIC LAB		2			2
MAILBOX DIAGNOSTICS		1	1	50%	2
COASTAL MED URGENT CARE			2	100%	2
BIRMINGHAM VAMC		1	1	50%	2
OHIO STATE UNIVERSITY MEDICAL CENTER			2	100%	2
HEALTH FIRST IBM-UX			2	100%	2
CENTRA CARE HUNTER'S CREEK			2	100%	2
HOME ACCESS HEALTH			2	100%	2
MEMORIAL SLOAN KETTERING CANCER CENTER		1	1	50%	2
EXOSOME DIAGNOSTICS		2			2
OHIO DEPARTMENT OF HEALTH LABORATORY		2			2
Cleveland Clinic Weston			2	100%	2
VRL EUROFINs			2	100%	2
SCDHEC BUREAU OF LABORATORIES			2	100%	2
SARASOTA MEMORIAL MEDICAL URGENT CARE CENTER			2	100%	2
NLC LABS			2	100%	2
NEW YORK STATE ELR - NEW YORK PRESBYTERIAN-LOWER MANHATTAN		2			2
COLLIER COUNTY HEALTH DEPT.			2	100%	2
GEISINGER MEDICAL CENTER		2			2
WHOLE CHILD PEDIATRICS			2	100%	2
GEORGIA DEPARTMENT OF PUBLIC HEALTH			2	100%	2
NEW YORK STATE ELR - ERIE COUNTY PUBLIC HEALTH CLINICAL		2			2
FLORIDA CLINICAL LABORATORY INC			2	100%	2
NEW YORK STATE ELR - LONG ISLAND JEWISH VALLEY STREAM		2			2
TREASURE COAST COMMUNITY HEALTH			2	100%	2
NEW YORK STATE ELR - BELLEVUE HOSPITAL CENTER DEPARTMENT		2			2
NEW YORK STATE ELR - AUBURN COMMUNITY HOSPITAL		2			2
JOHNSON CITY MEDICAL CENTER		1	1	50%	2
ENGLEWOOD HOSPITAL AND MEDICAL CENTER			2	100%	2
NEW YORK STATE ELR - GLENS FALLS HOSPITAL DEPARTMENT OF PATHOLOGY		2			2
NEW YORK STATE DEPARTMENT OF HEALTH		1	1	50%	2
ALLIANCE PEDIATRICS			2	100%	2
UC CORAL GABLES			2	100%	2
AHSE ROP		2			2
NEBRASKA MEDICAL CENTER			2	100%	2
HEART OF FLORIDA HMA			2	100%	2
MIDMICHIGAN MEDICAL CENTER			2	100%	2
PREMIER LABORATORY SERVICES, LLC			2	100%	2
PPD			2	100%	2

COVID-19: testing by laboratory

Data through Aug 8, 2020 verified as of Aug 9, 2020 at 09:25 AM

Data in this report are provisional and subject to change.

The numbers in the table below represent the number for whom test results were received by the Department of Health. A person can be tested by more than one laboratory and can have both positive and negative results. **Therefore, the sum of the numbers in each column will be larger than the total number of people tested.**

Reporting lab	Inconclusive	Negative	Positive	Percent positive	Total
MEDRITE			2	100%	2
UNIVERSITY OF WASHINGTON MEDICAL CENTER			2	100%	2
CONEMAUGH MEMORIAL MEDICAL CENTER		2			2
VERMONT DEPARTMENT OF HEALTH LABORATORY		1	1	50%	2
EXECUTIVE MEDICAL SERVICES		2			2
ACADIAN DIAGNOSTIC LABORATORIES		2			2
ONSLow MEMORIAL HOSPITAL LABORATORY		2			2
MINUTE CLINIC LLC #2216		2			2
LABCORP - OHIO			2	100%	2
QUEST DIAGNOSTICS-OCALA-SE 3RD		2			2
GALEN BAYLOR EXTENSION		2			2
LEESBURG REGIONAL MEDICAL CENTER		1	1	50%	2
PREMIER MEDICAL LABORATORY			2	100%	2
SHARP MEMORIAL HOSPITAL MICROBIOLOGY DEPT			2	100%	2
CVS PHARMACY, INC DBA CVS/PHARMACY #10581		2			2
ST VINCENT'S CHILTON		1	1	50%	2
ST. JOSEPH REGIONAL MEDICAL CENTER			2	100%	2
KETTERING HEALTH			2	100%	2
SIGNATURE CARE PFLUGERVILLE			2	100%	2
CORAL GABLES HOSPITAL			2	100%	2
FLORIDA HEALTH CARE PLANS			2	100%	2
LAKE MARY KIDS CENTRA CARE			2	100%	2
VIGILINT HEALTHCARE		1	1	50%	2
DEACONESS HOSPITAL			2	100%	2
AMERICAN FAMILY CARE- ORANGE BEACH			2	100%	2
ALTRU DIAGNOSTICS INC			2	100%	2
ADVANCED URGENT CARE CENTER OF THE UPPER KEYS			2	100%	2
RUSH UNIVERSITY MEDICAL CENTER LABORATORY			2	100%	2
FCHC (OB)-DARWIN SQUARE CTR.			2	100%	2
AMERICAN MEDICAL LABORATORIES			2	100%	2
UCLA HEALTHCARE CLINICAL LABS			2	100%	2
UK HEALTHCARE			2	100%	2
VIRTUA MEMORIAL HOSPITAL BURLINGTON COUNTY			2	100%	2
RICHMOND UNIVERSITY MEDICAL CENTER		1	1	50%	2
UNIVERSITY OF MIAMI			2	100%	2
ST PETERSBURG PEDIATRICS-EAST BAY			2	100%	2
LABCORP PHOENIX			2	100%	2
ST CHARLES HOSPITAL LABORATORY		2			2
GUTHRIE MEDICAL GROUP LABORATORIES		2			2
WALGREENS #5317		2			2
BIO-TECH CLINICAL LABORATORIES			2	100%	2
MINUTECLINIC DIAGNOSTIC OF RHODE ISLAND, LLC #590		2			2
QUEST DIAGNOSTICS INCORPORATED			2	100%	2
MONTANA PUBLIC HEALTH LAB			2	100%	2
WATAUGA MEDICAL CENTER		1	1	50%	2
MONROE COUNTY HOSPITAL		2			2

COVID-19: testing by laboratory

Data through Aug 8, 2020 verified as of Aug 9, 2020 at 09:25 AM

Data in this report are provisional and subject to change.

The numbers in the table below represent the number for whom test results were received by the Department of Health. A person can be tested by more than one laboratory and can have both positive and negative results. **Therefore, the sum of the numbers in each column will be larger than the total number of people tested.**

Reporting lab	Inconclusive	Negative	Positive	Percent positive	Total
MINUTECLINIC DIAGNOSTIC OF RHODE ISLAND, LLC #1544		2			2
ROCKEFELLER UNIVERSITY CLINICAL GENOMICS LABORATOR		2			2
IOWA DEPARTMENT OF PUBLIC HEALTH			2	100%	2
LABCORP - LEESBURG			2	100%	2
LABCORP RARITAN		2			2
PRIMARY CARE OF THE TREASURE COAST			2	100%	2
AMEERAH LABS			2	100%	2
OMNICARE PHARMACY OFTEXAS 1, LP DBA OMNICARE		2			2
UNIVERSITY HOSPITAL OF BROOKLYN		2			2
ALLIANCE LABS @LRMC			2	100%	2
ALVERNO CLINICAL LABORATORIES			2	100%	2
UNIVERSITY HOSPITAL			2	100%	2
ALABAMA DEPARTMENT OF PUBLIC HEALTH			2	100%	2
BAY CARE LAB SERVICES/ST. ANTHONY'S HOSPITAL			2	100%	2
NOVANT HEALTH GOHEALTH URGENT CARE-HARRISBURG			2	100%	2
OKLAHOMA STATE DEPARTMENT OF HEALTH-PUBLIC HEALTH LABORATORY			2	100%	2
BIODESIX, INC.		2			2
UNIVERSITY OF CHICAGO MEDICAL CENTER LAB			2	100%	2
THOMAS LANGLEY			2	100%	2
MADISON COUNTY MEMORIAL HOSP		1	1	50%	2
PHYSICIANS LABORATORY SERVICES			2	100%	2
ADVANCED MEDICAL CARE			2	100%	2
SOUTH GEORGIA MEDICAL CENTER			2	100%	2
INTERLACHEN PEDIATRICS		2			2
BETH ISRAEL DEACONESS MEDICAL CENTER			2	100%	2
QUEST DIAGNOSTICS-OCALA-SW HIGHWAY 200		2			2
NOVANT HEALTH INPATIENT CARE			2	100%	2
LEGACY LABORATORY SERVICES			2	100%	2
LABCORP - STUART		1	1	50%	2
CALHOUN LIBERTY HOSPITAL			2	100%	2
QUEENS HOSPITAL CENTER		2			2
OMNI			2	100%	2
INTERNAL MEDICINE ASSOCIATES-DUNELLON			2	100%	2
JACKSON LABORATORY OF GENOMIC MEDICINE		2			2
URGENT CARE TCMA			2	100%	2
CAPTAIN JAMES A. LOVELL FEDERAL HEALTHCARE CENTER			2	100%	2
UT MEMPHIS UNIVERSITY HEALTH SERVICES			2	100%	2
NEW YORK STATE ELR - COLUMBIA MEMORIAL HOSPITAL LABORATORY		2			2
UF KANAPAHA LAB BEAKER		1			1
COLORADO DEPARTMENT OF HEALTH LABORATORY SERVICES DIVISION			1	100%	1
UTMB PATHOLOGY CLINICAL SERVICES LABORATORY			1	100%	1
Viracor Eurofins			1	100%	1
TRINITAS REGIONAL MEDICAL CENTER			1	100%	1
COMPUNET CLINICAL LAB			1	100%	1
THE UNIVERSITY OF VERMONT MEDICAL CENTER		1			1
VIDANT MEDICAL CENTER			1	100%	1

COVID-19: testing by laboratory

Data through Aug 8, 2020 verified as of Aug 9, 2020 at 09:25 AM

Data in this report are provisional and subject to change.

The numbers in the table below represent the number for whom test results were received by the Department of Health. A person can be tested by more than one laboratory and can have both positive and negative results. **Therefore, the sum of the numbers in each column will be larger than the total number of people tested.**

Reporting lab	Inconclusive	Negative	Positive	Percent positive	Total
TIMPANOGOS REGIONAL HOSPITAL			1	100%	1
CHATSWORTH ASSISTED LIVING COMMUNITY AT PGA NATIONAL			1	100%	1
WEST			1	100%	1
UAB			1	100%	1
WARD MEMORIAL HOSPITAL		1			1
HANCOCK REGIONAL HOSPITAL		1			1
BROOKSVILLE REGIONAL HOSPITAL			1	100%	1
ALABAMA REFERENCE LAB			1	100%	1
US LABORATORIES			1	100%	1
TAMPA		1			1
UNITED HEALTHCARE			1	100%	1
WEST PACIFIC MEDICAL LABORATORY			1	100%	1
VA GREATER LOS ANGELES HEALTH CARE SYSTEM			1	100%	1
UNIVERSITY LAB			1	100%	1
VA HOSPITAL			1	100%	1
GEORGE SAFRAN MD PC		1			1
TIEHH BIOTERRORISM RESPONSE LAB			1	100%	1
VALLEY HOSPITAL MEDICAL CENTER		1			1
WELLINGTON WEST 100176			1	100%	1
WASHINGTON STATE DEPARTMENT OF HEALTH PUBLIC HEALTH LABORATORIES			1	100%	1
BAYONET POINT HOSPITAL LAB			1	100%	1
ST JOSEPHS CHILDRENS HOSPITAL OUTREACH			1	100%	1
BARDMOOR LABORATORY			1	100%	1
SOUTHEAST GEORGIA HEALTH SYSTEM			1	100%	1
YORK HOSPITAL - LABORATORY			1	100%	1
UNIVERSITY OF MISSOURI HEALTH CARE			1	100%	1
UNIVERSITY HOSPITALS OF CLEVELAND			1	100%	1
SPECTOR SCIENTIFIC LAB			1	100%	1
ST.ELIZABETH HEALTH CENTER	1				1
APPALACHIAN REGIONAL HEALTHCARE SYSTEM		1			1
ST FRANCIS			1	100%	1
WEST KENDALL HOSPITAL			1	100%	1
DALLAS MEDICAL CENTER			1	100%	1
State Lab Unspecifd			1	100%	1
THE HEART HOSPITAL BAYLOR PLANO			1	100%	1
TEXAS DEPARTMENT OF STATE HEALTH SERVICES			1	100%	1
LABCORP - LADY LAKE			1	100%	1
SANFORD REGIONAL HOSPITAL WORTHINGTON		1			1
TANNER MEDICAL CENTER EAST AL		1			1
ST. MARY MEDICAL CENTER		1			1
SENTARA NORFOLK GENERAL HOSPITAL CENTRAL LAB			1	100%	1
TUFTS MEDICAL CENTER			1	100%	1
UW HOSPITAL AND CLINICS			1	100%	1
ADVENTHEALTH CENTRA CARE APOPKA			1	100%	1
WELLNOW URGENT CARE		1			1
AFFILIATED LABORATORIES INC			1	100%	1

COVID-19: testing by laboratory

Data through Aug 8, 2020 verified as of Aug 9, 2020 at 09:25 AM

Data in this report are provisional and subject to change.

The numbers in the table below represent the number for whom test results were received by the Department of Health. A person can be tested by more than one laboratory and can have both positive and negative results. **Therefore, the sum of the numbers in each column will be larger than the total number of people tested.**

Reporting lab	Inconclusive	Negative	Positive	Percent positive	Total
WILMINGTON VA MEDICAL CENTER			1	100%	1
SV MOBILE HEALTH			1	100%	1
TENNESSEE DOH - KNOXVILLE			1	100%	1
BRISTOL REGINAL MEDICAL CENTER			1	100%	1
KETTERING MEDICAL CENTER			1	100%	1
JEFFERSON COUNTY HEALTH DEPARTMENT-MONTICELLO		1			1
ALLIANCE LABORATORY SERVICES			1	100%	1
UNKNOWN - MI			1	100%	1
KENTUCKY CABINET FOR HEALTH AND FAMILY SERVICES			1	100%	1
BIODORON LABORATORIES			1	100%	1
UNIVERSITY OF KANSAS MEDICAL CENTER			1	100%	1
VIRACOR			1	100%	1
VELOCITY CARE			1	100%	1
URGENT CARE WEST CLINIC			1	100%	1
UNIVERSITY OF FLORIDA			1	100%	1
VA OUTPATIENT CLINIC			1	100%	1
VITAE DIAGNOSTICS			1	100%	1
VA OUT PATIENT CENTER			1	100%	1
WILLIAM A HINTON STATE LABORATORY INSTITUTE			1	100%	1
UNITED CLINICAL LABORATORIES			1	100%	1
SOUTHWEST FLORIDA DIVISION LAB			1	100%	1
TRUMAN MEDICAL CENTER - HOSPITAL HILL			1	100%	1
SKY RIDGE MEDICAL CENTER - MICRO			1	100%	1
DOCTOR'S WALK-IN CLINIC / QUEST DIAGNOSTICS			1	100%	1
UNK			1	100%	1
ADVENTIST HINSDALE HOSPITAL LABORATORY			1	100%	1
STANLY REGIONAL MEDICAL CENTER			1	100%	1
LABCORP - PALM BEACH GARDENS			1	100%	1
WEST VIRGINIA UNIVERSITY HOSPITALS			1	100%	1
UNITED LABORATORY SERVICE			1	100%	1
ST. LUKE'S HOSPITAL - BETHLEHEM CAMPUS		1			1
GEORGETOWN URGENT CARE			1	100%	1
SUNY AT STONY BROOK			1	100%	1
SCRIPPS CLINIC MEDICAL			1	100%	1
HARTFORD HOSPITAL ANCILLARY LAB		1			1
ST. LUCIE COUNTY HEALTH DEPARTMENT		1			1
LABCORP-PORT ST.LUCIE		1			1
HARLEM HOSPITAL CENTER		1			1
MAGNOLIA ADULT, LLC			1	100%	1
MARCO ISLAND HOSPITAL INC D/B/A			1	100%	1
HIGHLANDS CLINICAL LABORATORY			1	100%	1
LATE HOURS URGENT CARE			1	100%	1
FUNGAL REFERENCE LABORATORY		1			1
OHIO DEPARTMENT OF HEALTH			1	100%	1
OMNICARE PHARMACY OF TEXAS 1, LP		1			1
PALM BEACH COUNTY HEALTH DEPARTMENT LABORATORY			1	100%	1

COVID-19: testing by laboratory

Data through Aug 8, 2020 verified as of Aug 9, 2020 at 09:25 AM

Data in this report are provisional and subject to change.

The numbers in the table below represent the number for whom test results were received by the Department of Health. A person can be tested by more than one laboratory and can have both positive and negative results. **Therefore, the sum of the numbers in each column will be larger than the total number of people tested.**

Reporting lab	Inconclusive	Negative	Positive	Percent positive	Total
LAB CORP PHOENIX			1	100%	1
HOUSTON HEALTH DEPARTMENT - BUREAU OF LABORATORY SERVICES			1	100%	1
NORTH FLORIDA PEDIATRICS JASPER			1	100%	1
KANSAS DEPARTMENT OF HEALTH			1	100%	1
JOHN D. ARCHBOLD MEMORIAL HOSPITAL			1	100%	1
HARDIN MEMORIAL HOSPITAL - HEARTLAND PATHOLOGY CONSULTANTS			1	100%	1
SACRED HEART MEDICAL GROUP			1	100%	1
PARKWAY REGIONAL MEDICAL CENTER LAB			1	100%	1
PORT ST LUCIE REHABILITATION AND HEALTHCARE			1	100%	1
HOLY NAME MEDICAL CENTER		1			1
FORT SANDERS REGIONAL LABORATORY		1			1
SANFORD SOUTH UNIVERSITY		1			1
SEA LEVEL LABS			1	100%	1
COCOA BEACH/ADVENT CENTRA		1			1
ILLINOIS DEPT OF PUBLIC HEALTH LABS			1	100%	1
REGIONAL MEDICAL LABORATORY			1	100%	1
REMISE OCCUPATIONAL HEALTH SOLUTIONS INC			1	100%	1
LabCorp L#09258090 M#09258105			1	100%	1
MEDICAL CENTER ENTERPRISE			1	100%	1
MEDONE URGENT CARE			1	100%	1
CELEBRATION HOSPITAL			1	100%	1
LAKEWOOD RANCH ER 24/7			1	100%	1
MARION COUNTY HEALTH DEPARTMENT			1	100%	1
CFCH - FROSTPROOF			1	100%	1
FLORIDA HOSPITAL KISSIMMEE			1	100%	1
DEPARTMENT OF HEALTH AND HUMAN SERVICES DIVISION OF BEHAVIORAL HEALTH		1			1
NORTH BROWARD MEDICAL CENTER			1	100%	1
FLORIDA HOSPITAL ALTAMONTE			1	100%	1
MIAMI BEACH URGENT CARE			1	100%	1
NAVAL BRANCH MEDICAL CLINIC			1	100%	1
NORTHERN WESTCHESTER HOSPITAL LABORATORY		1			1
PHELPS HOSPITAL LABORATORY		1			1
EDGAR PRICE FAMILY & CHILDREN HEALTHCARE CENTER			1	100%	1
DSI LABORATORIES-NAPLES-7TH			1	100%	1
NOT GIVEN			1	100%	1
PALM SPRINGS GENERAL HOSPITAL			1	100%	1
PEDIATRIC ASSOCIATES - JACKSONVILLE			1	100%	1
DERMDX, DIV OF AURORA DIAGNOSTICS/BERNHARDT LAB		1			1
DOCTORS CLINICAL LABORATORY, INC			1	100%	1
EAST TENNESSEE STATE UNIVERSITY		1			1
CHARLOTTE CHD PORT CHARLOTTE		1			1
CLIFTON-FINE HOSPITAL LABORATORY		1			1
COMMONWEALTH OF MASSACHUSETTS			1	100%	1
ELMHURST MEMORIAL HOSPITAL			1	100%	1
GENETRAIT LABORATORIES			1	100%	1
GRAND VIEW HOSPITAL			1	100%	1

COVID-19: testing by laboratory

Data through Aug 8, 2020 verified as of Aug 9, 2020 at 09:25 AM

Data in this report are provisional and subject to change.

The numbers in the table below represent the number for whom test results were received by the Department of Health. A person can be tested by more than one laboratory and can have both positive and negative results. **Therefore, the sum of the numbers in each column will be larger than the total number of people tested.**

Reporting lab	Inconclusive	Negative	Positive	Percent positive	Total
HEALTH ALLIANCE			1	100%	1
DHEC - S.C PUBLIC HEALTH LAB			1	100%	1
EXPRESS GENE MOLECULAR DIAGNOSTICS LABORATORY			1	100%	1
COASTAL MEDICAL LAB			1	100%	1
KANA MEDICAL			1	100%	1
ECLRS			1	100%	1
ADVANCED URGENT CARE OF MARATHON			1	100%	1
HAWAII DEPARTMENT OF HEALTH LAB			1	100%	1
HELIX DIAGNOSTICS			1	100%	1
FALMOUTH BY THE SEA			1	100%	1
BAPTIST HEALTH MEDICAL CENTER			1	100%	1
BAYFRONT MEDICAL			1	100%	1
BEAUFORT MEMORIAL			1	100%	1
BEAUMONT HOSPITAL, GROSSE POINTE			1	100%	1
ELITE CARE			1	100%	1
DUKE HEALTH REGIONAL HOSPITAL			1	100%	1
BASCOM PALMER-MICRO LAB			1	100%	1
INDIAN RIVER CLINICAL LABORATORY, INC.		1			1
BEAUMONT REFERENCE LABORATORY			1	100%	1
PEACHEALTH LABORATORIES		1			1
PIEDMONT HOSPITAL LAB			1	100%	1
NORTH SHORE HEMATOLOGY-ONCOLOGY ASSOCIATES, PC		1			1
FLORIDA DEPARTMENT OF HEALTH IN MIAMI DADE COUNTY			1	100%	1
NORTHWEST FLORIDA CLINICAL LAB			1	100%	1
APS-SUMMIT CARE PHARMACY, LLC DBA OMNICARE		1			1
ACCESSLAB		1			1
MEDICAL CENTER AT OCEAN REEF			1	100%	1
GENETIC ASSAYS INC			1	100%	1
REFERENCE LABORATORY			1	100%	1
RIVERSIDE METHODIST HOSPITAL LAB			1	100%	1
AMD			1	100%	1
LABCORP SOUTH CHARLESTON			1	100%	1
MARINA DEL REY HOSPITAL LAB			1	100%	1
MARYLAND DEPARTMENT OF HEALTH AND MENTAL HYGIENE			1	100%	1
INTERMOUNTAIN MEDICAL CENTER			1	100%	1
CAROMONT HEALTH			1	100%	1
CLEVELAND CLINIC OHIO LABORATORIES			1	100%	1
MD NOW URGENT CARE CENTER INC.			1	100%	1
MERCY HEALTH—MUSKEGON		1			1
METRO KNOXVILLE HMA		1			1
MISSOURI DEPARTMENT OF HEALTH AND SENIOR SERVICES - STATE PH LAB		1			1
BMC/JACSONVILLE		1			1
MEMORIAL HEALTH UNIVERSITY MEDICAL CENTER			1	100%	1
BERKSHIRE MEDICAL CENTER			1	100%	1
NEW YORK CITY DEPARTMENT OF HEALTH			1	100%	1
CONEY ISLAND HOSPITAL		1			1

COVID-19: testing by laboratory

Data through Aug 8, 2020 verified as of Aug 9, 2020 at 09:25 AM

Data in this report are provisional and subject to change.

The numbers in the table below represent the number for whom test results were received by the Department of Health. A person can be tested by more than one laboratory and can have both positive and negative results. **Therefore, the sum of the numbers in each column will be larger than the total number of people tested.**

Reporting lab	Inconclusive	Negative	Positive	Percent positive	Total
MHS LAB		1			1
MOLECULAR PATHOLOGY LABORATORY			1	100%	1
LABCORP-CRYSTAL RIVER			1	100%	1
Lourdes Hospital			1	100%	1
MCH PHYSICIANS GROUP			1	100%	1
CITRUS PARK			1	100%	1
CAH ACQUISITION COMPANY 11 LLC			1	100%	1
NORTHSIDE HOSPITAL DULUTH			1	100%	1
NORTHWESTERN MEMORIAL HOSPITAL			1	100%	1
HEALTH NETWORK LABORATORIES		1			1
CATHOLIC HEALTH SYSTEM DEPT LABORATORY		1			1
NEW YORK STATE ELR - MONTEFIORE MEDICAL CENTER LABORATORIES - WEILER			1	100%	1
FLORIDA DEPARTMENT OF HEALTH PALM BEACH COUNTY			1	100%	1
OSWEGO HOSPITAL LABORATORY		1			1
FLORIDA CLINICAL LABORATORY - BIOREFERENCE LABORATORIES			1	100%	1
LABCORP - HOLLYWOOD			1	100%	1
NEW YORK STATE ELR - ST BARNABAS HOSPITAL		1			1
FLORIDA HOSPITAL LAB			1	100%	1
PRORENATA LABS			1	100%	1
RIVIERA BEACH HEALTH CENTER LAB			1	100%	1
ROBERT WOOD JOHNSON HOSPITAL			1	100%	1
DELAWARE DIAGNOSTICS LABS			1	100%	1
QUEST DIAGNOSTICS-WEST HILLS		1			1
LABCORP LAFAYETTE		1			1
RIVERSIDE MEDICAL GROUP		1			1
ONEIDA HEALTHCARE CENTER		1			1
ADVANCED MEDICAL LABORATORIES (AML)			1	100%	1
DOCS URGENT CARE			1	100%	1
MAGNOLIA PEDIATRICS			1	100%	1
BAYCARE OUTREACH LAB			1	100%	1
BAYCARE ALLIANT HOSPITAL			1	100%	1
JRS LABORATORY			1	100%	1
CQUENTIA NGS, LLC			1	100%	1
ACCESS HEALTH CARE PHYSICIANS			1	100%	1
ORMC-ARDEN/EOI			1	100%	1
PATHLINE			1	100%	1
MID FLORIDA CLINICAL LABORATORY			1	100%	1
MINUTECLINIC DIAGNOSTIC OF TEXAS		1			1
AFC URGENT CARE			1	100%	1
BioReference Laboratories, Inc			1	100%	1
SMITH KLINE			1	100%	1
SONIC REFERENCE LABORATORY			1	100%	1
ACL LABORATORIES INDUSTRIAL TOXICOLOGY			1	100%	1
BLOUNT MEMORIAL HOSPITAL		1			1
BLOOD SYSTEMS LABORATORIES			1	100%	1
SPRING HILL REGIONAL HOSPITAL			1	100%	1

COVID-19: testing by laboratory

Data through Aug 8, 2020 verified as of Aug 9, 2020 at 09:25 AM

Data in this report are provisional and subject to change.

The numbers in the table below represent the number for whom test results were received by the Department of Health. A person can be tested by more than one laboratory and can have both positive and negative results. **Therefore, the sum of the numbers in each column will be larger than the total number of people tested.**

Reporting lab	Inconclusive	Negative	Positive	Percent positive	Total
BAYLOR ESOTERIC AND MOLECULAR LAB			1	100%	1
THE CHILDREN'S HOSPITAL OF PHILADELPHIA		1			1
BAYLOR COLLEGE OF MEDICINE			1	100%	1
EXCEL URGENT CARE OF NJ			1	100%	1
BEEBE MEDICAL CENTER LABORATORY		1			1
SUNY UPSTATE MEDICAL UNIVERSITY			1	100%	1
LEESBURG FAMILY MEDICINE		1			1
LOYOLA UNIVERSITY MEDICAL CENTER LABORATORY			1	100%	1
BAYCARE MEDICAL GROUP			1	100%	1
CAROLINAS HEALTHCARE SYSTEM LAB			1	100%	1
SOUTHWEST REGIONAL PCR LABORATORY			1	100%	1
LABCORP HOUSTON			1	100%	1
MEDICAL ARTS LABORATORY			1	100%	1
MPG JACKSONVILLE ATLANTIC BLVD		1			1
Mt Sinai Aventura			1	100%	1
ARNOLD PALMER HOSPITAL LABORATORY			1	100%	1
BAPTIST HEALTH EXPRESS CARE AT KEY BISCAYNE			1	100%	1
MINUTECLINIC DIAGNOSTIC OF TEXAS, LLC		1			1
MONTANA DEPARTMENT OF PUBLIC HEALTH & HUMAN SERVICES			1	100%	1
ORANGE COUNTY HEALTH DEPT			1	100%	1
PEDIATRIC HEALTHCARE ALLIANCE			1	100%	1
PERDIDO URGENT CARE			1	100%	1
CALIFORNIA PUBLIC HEALTH LABORATORY			1	100%	1
NORTH CAROLINA STATE LABORATORY OF PUBLIC HEALTH, SPECTRUM LAB NETWORK			1	100%	1
NORTH RIVER FAMILY HEALTH CENTER			1	100%	1
PRISMA HEALTH TUOMEY LABORATORY			1	100%	1
CBC LAB			1	100%	1
SEMINOLE COUNTY HEALTH DEPARTMENT			1	100%	1
SOUTH LAKE FAMILY HEALTH CENTER			1	100%	1
BIOMERIEUX			1	100%	1
QUEST - HOUSTON LAB			1	100%	1
CGH MEDICAL CENTER			1	100%	1
ARKANSAS DEPARTMENT OF HEALTH			1	100%	1
MEDICAL CLINIC OF HOUSTON			1	100%	1
GIFFORD MEMORIAL HOSPITAL		1			1
MEDSTAR HARBOR HOSPITAL			1	100%	1
LABCORP - ORLANDO		1			1
LABCORP KANSAS CITY			1	100%	1
LAKEVIEW REGIONAL HOSPITAL			1	100%	1
MEMORIAL HERMANN CONSOLIDATED LABORATORY SERVICES			1	100%	1
MONTEFIORE NYACK HOSPITAL AFFILIATED LABORATORY		1			1
MUNSON MEDICAL CENTER			1	100%	1
NEW YORK STATE ELR - MERCY MEDICAL CENTER		1			1
MINUTE CLINIC DIAGNOSTIC OF VIRGINIA		1			1
MINUTECLINIC DIAGNOSTIC			1	100%	1
LABCORP - DAYTONA BEACH			1	100%	1

COVID-19: testing by laboratory

Data through Aug 8, 2020 verified as of Aug 9, 2020 at 09:25 AM

Data in this report are provisional and subject to change.

The numbers in the table below represent the number for whom test results were received by the Department of Health. A person can be tested by more than one laboratory and can have both positive and negative results. **Therefore, the sum of the numbers in each column will be larger than the total number of people tested.**

Reporting lab	Inconclusive	Negative	Positive	Percent positive	Total
RIVERVIEW REGIONAL MEDICAL CENTER		1			1
SCIENCE CARE			1	100%	1
SHANDS AT LAKE SHORE LAB			1	100%	1
PARROTT MEDICAL CLINIC			1	100%	1
PROGENESIS INC			1	100%	1
QUEST ELR		1			1
BAPTIST ER TOWN CTR			1	100%	1
SUNRISE DIAGNOSTIC LABORATORY			1	100%	1
LABCORP - JACKSONVILLE			1	100%	1
INTERMOUNTAIN CENTRAL LAB			1	100%	1
SMITH NORTHVIEW HOSPITAL LAB			1	100%	1
AZALEA HEALTH			1	100%	1
ADVANCED LABORATORY SERVICES			1	100%	1
Total	26,010	4,571,866	676,365	13%	5,274,241