

Coronavirus: summary of persons being monitored, persons under investigation, and cases

Data through Jul 4, 2020 verified as of Jul 5, 2020 at 09:25 AM

Data in this report are provisional and subject to change.

Monitored persons: people the Florida Department of Health was notified of for possible monitoring because they are a contact of a case, traveled from China, or were identified by the Centers for Disease Control and Prevention (CDC) as a part of a airline/ship contact investigation	
Total reports	79,217
Total persons of high, medium, or unknown risk	75,527
High/medium/unknown risk still being monitored	17,060

Persons tested: includes PCR and antigen test results received by the Department of Health from the state public health laboratory (BPHL), as well as commercial and hospital laboratories	
Total tested	2,202,095
Positive	200,111
Negative	2,000,088
Inconclusive	1,896
Awaiting testing	1,508

Cases: people with positive PCR or antigen test result	
Total cases	200,111
Florida residents	197,076
Non-Florida residents	3,035
Type of testing	
Florida residents	
Positive by BPHL/CDC	8,085
Positive by commercial/hospital lab	188,991
Non-Florida residents	
Positive by BPHL/CDC	160
Positive by commercial/hospital lab	2,875
Characteristics	
Florida residents hospitalized	15,895
Florida resident deaths	3,731
Non-Florida resident deaths	101
Hospitalized counts include anyone who was hospitalized at some point during their illness. It does not reflect the number of people currently hospitalized.	
More information on deaths identified through death certificate data is available on the National Center for Health Statistics website at www.cdc.gov/nchs/nvss/vsrr/COVID19/index.htm .	
Risk factors for Florida residents	
Traveled	2,642
Contact with a known case	60,645
Traveled and contact with a known case	2,575
Neither	131,214
No travel and no contact	21,872
Travel is unknown	88,404
Contact is unknown	29,560
Contact is pending	77,721
Travel can be unknown and contact can be unknown or pending for the same case, these numbers will sum to more than the "neither" total.	

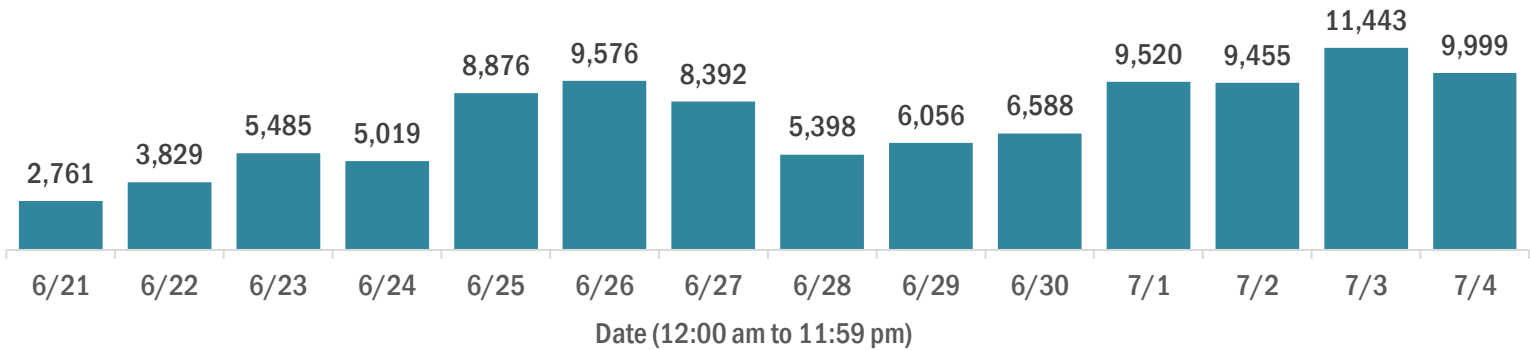
Coronavirus: cases and laboratory testing over time

Data through Jul 4, 2020 verified as of Jul 5, 2020 at 09:25 AM

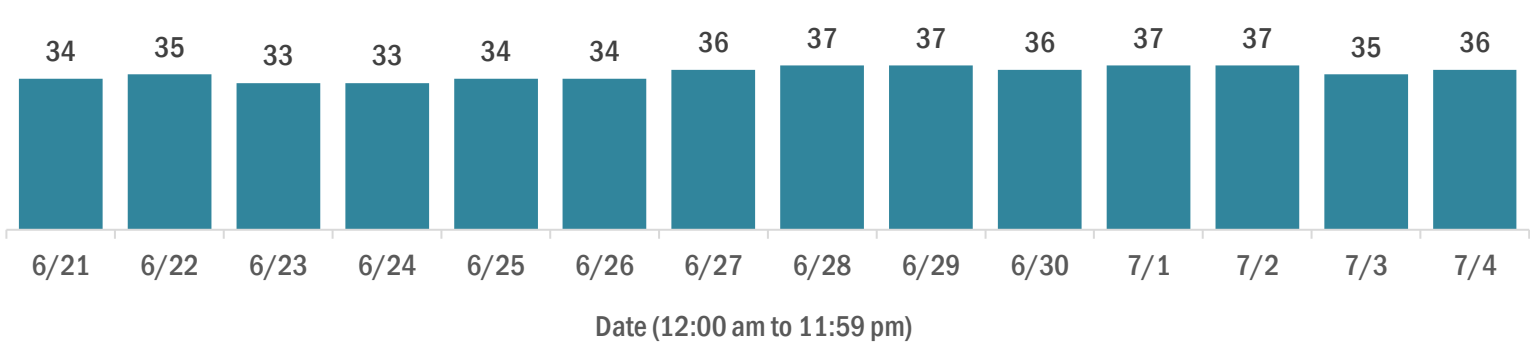
Data in this report are provisional and subject to change.

Cases in Florida residents per day for the past 2 weeks

Number of cases per day



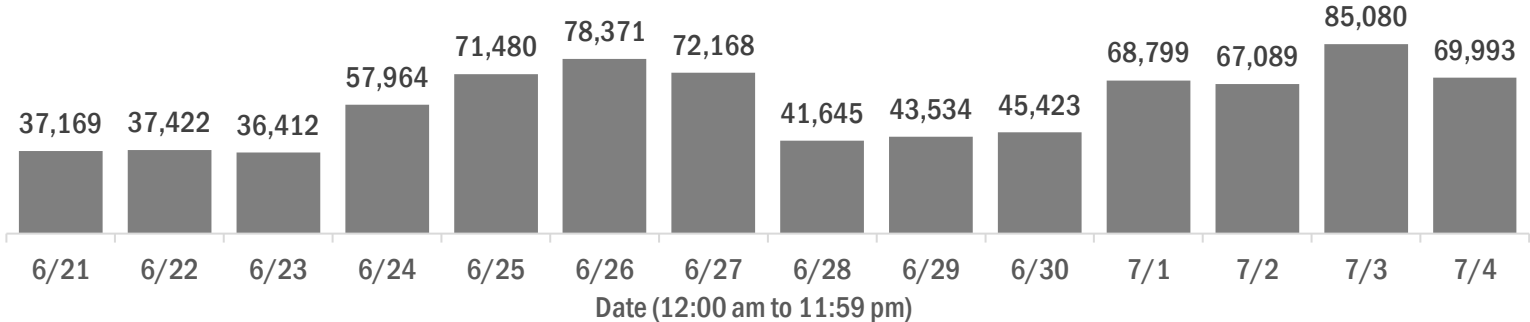
Median age of cases by day



Laboratory testing for Florida residents and non-Florida residents over the past 2 weeks

Number of people tested per day

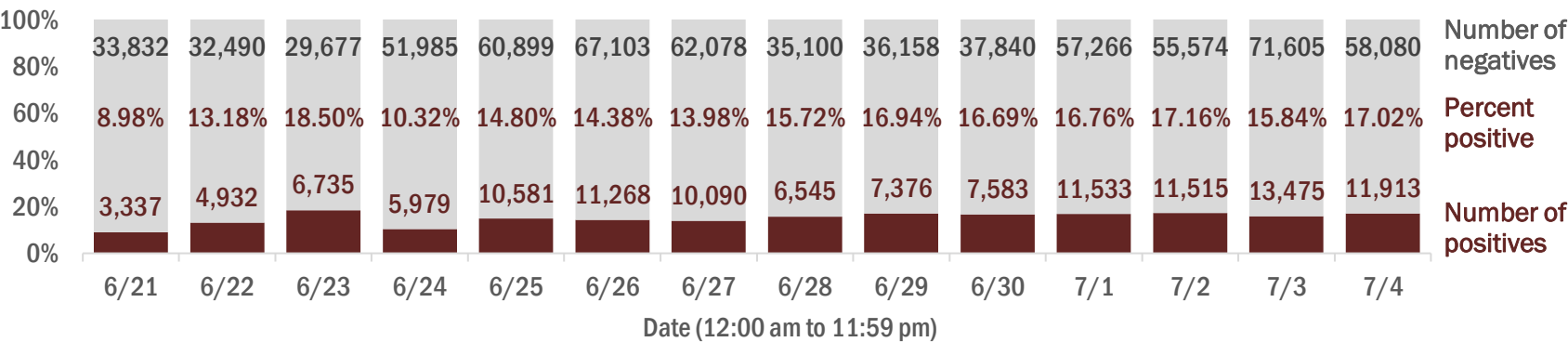
These counts include the number of people for whom the department received PCR or antigen laboratory results by day. People tested on multiple days will be included for each day a new result was received. A person is only counted once for each day they are tested, regardless of whether multiple specimens are tested or multiple results are received.



Number and percent of positive labs

The percent of positive results ranged from 8.98% to 18.50% over the past 2 weeks and was 17.02% yesterday.

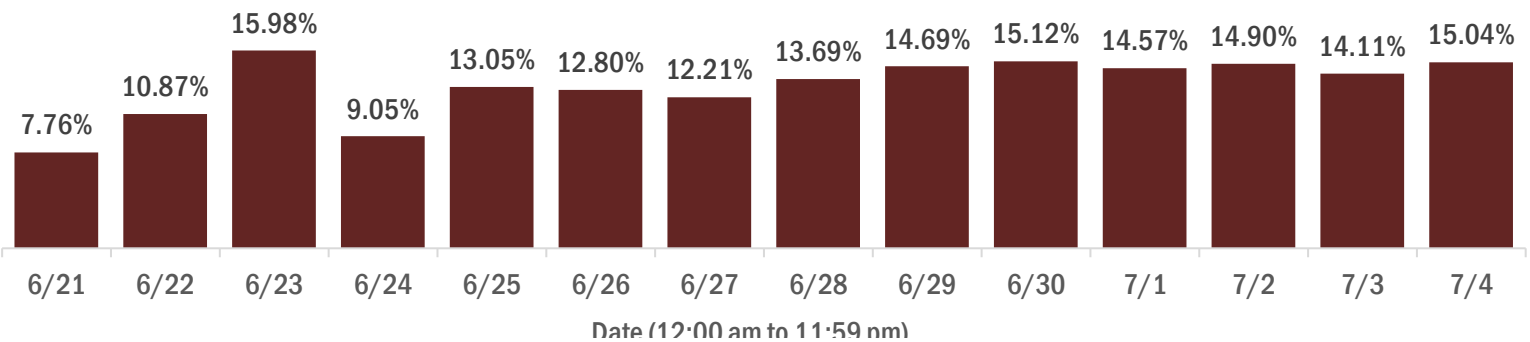
These counts include the number of people for whom the department received PCR or antigen laboratory results by day. People tested on multiple days will be included for each day a new result was received. A person is only counted once for each day they are tested, regardless of whether multiple specimens are tested or multiple results are received. If a person has a positive specimen and a negative specimen in the same day, only the positive result is counted.



Percent positivity for new cases

The percent of positive results ranged from 7.76% to 15.98% over the past 2 weeks and was 15.04% yesterday.

This percent is the number of people who test PCR- or antigen-positive for the first time divided by all the people tested that day, excluding people who have previously tested positive.



Coronavirus: characteristics of 197,076 Florida resident cases

Data through Jul 4, 2020 verified as of Jul 5, 2020 at 09:25 AM

Data in this report are provisional and subject to change.

Age group	Cases		Hospitalizations		Deaths	
0-4 years	3,102	2%	73	0%	0	0%
5-14 years	6,346	3%	60	0%	1	0%
15-24 years	31,990	16%	382	2%	7	0%
25-34 years	40,970	21%	989	6%	20	1%
35-44 years	31,931	16%	1,469	9%	68	2%
45-54 years	29,886	15%	2,140	13%	146	4%
55-64 years	24,029	12%	2,752	17%	337	9%
65-74 years	14,420	7%	3,063	19%	772	21%
75-84 years	8,612	4%	2,771	17%	1,040	28%
85+ years	5,479	3%	2,196	14%	1,340	36%
Unknown	311	0%	0	0%	0	0%
Total	197,076		15,895		3,731	

Gender	Cases	
Male	96,898	49%
Female	99,409	50%
Unknown	769	0%
Total	197,076	

Ethnicity	Cases		Hospitalizations		Deaths	
Hispanic	54,692	28%	5,548	35%	964	26%
Non-Hispanic	67,601	34%	9,572	60%	2,513	67%
Unknown	74,783	38%	775	5%	254	7%
Total	197,076		15,895		3,731	

Race, ethnicity	Cases		Hospitalizations		Deaths	
White	81,562	41%	9,488	60%	2,562	69%
Hispanic	38,439	20%	4,099	26%	785	21%
Non-Hispanic	36,239	18%	5,119	32%	1,672	45%
Unknown ethnicity	6,884	3%	270	2%	105	3%
Black	30,567	16%	4,202	26%	776	21%
Hispanic	1,507	1%	212	1%	24	1%
Non-Hispanic	25,942	13%	3,891	24%	728	20%
Unknown ethnicity	3,118	2%	99	1%	24	1%
Other	17,302	9%	1,746	11%	257	7%
Hispanic	10,329	5%	1,131	7%	138	4%
Non-Hispanic	4,051	2%	523	3%	103	3%
Unknown ethnicity	2,922	1%	92	1%	16	0%
Unknown race	67,645	34%	459	3%	136	4%
Hispanic	4,417	2%	106	1%	17	0%
Non-Hispanic	1,369	1%	39	0%	10	0%
Unknown ethnicity	61,859	31%	314	2%	109	3%
Total	197,076		15,895		3,731	

Hospitalization counts include anyone who was hospitalized at some point during their illness. It does not reflect the number of people currently hospitalized. **Other race** includes any person with a race of American Indian/Alaskan native, Asian, native Hawaiian/Pacific Islander, or other.

Coronavirus: deaths in Florida residents and staff of long-term care facilities

Data through Jul 4, 2020 verified as of Jul 5, 2020 at 09:25 AM

Data in this report are provisional and subject to change.

For current cases in residents or staff of long-term care facilities, please visit: <https://floridahealthcovid19.gov/>

County	Deaths		County	Deaths		County	Deaths	
Dade	527	27%	Indian River	9	0%	Monroe	1	0%
Palm Beach	235	12%	Osceola	9	0%	Nassau	1	0%
Broward	167	9%	Walton	9	0%	St. Johns	1	0%
Pinellas	149	8%	Orange	8	0%	Sumter	1	0%
Lee	119	6%	Seminole	8	0%	Total	1,937	
Hillsborough	96	5%	Calhoun	6	0%			
Manatee	87	4%	Lake	5	0%			
Polk	68	4%	Gadsden	4	0%			
Sarasota	63	3%	Jefferson	4	0%			
Charlotte	48	2%	Leon	4	0%			
Collier	39	2%	Okaloosa	4	0%			
Escambia	36	2%	Baker	3	0%			
Volusia	36	2%	Brevard	3	0%			
Duval	34	2%	Madison	3	0%			
St. Lucie	26	1%	Marion	3	0%			
Clay	24	1%	Bradford	2	0%			
Suwannee	20	1%	Putnam	2	0%			
Hendry	18	1%	Citrus	1	0%			
Martin	14	1%	Desoto	1	0%			
Pasco	14	1%	Hardee	1	0%			
Washington	12	1%	Hernando	1	0%			
Alachua	10	1%	Levy	1	0%			

Note: cases are summarized by the county of usual residence. Residents and staff may be cases associated with facilities that are not in their county of usual residence, resulting in cases being included below for counties that do not have facilities with known cases.

Coronavirus: characteristics of 200,111 cases

Data through Jul 4, 2020 verified as of Jul 5, 2020 at 09:25 AM

Data in this report are provisional and subject to change.

Tables below include cases in Florida residents and non-Florida residents.

All 67 Florida counties have cases:

County	FL resident			Non-FL resident	Total
Dade	46,445	<div></div>	24%	566	47,011
Broward	20,900	<div></div>	11%	339	21,239
Palm Beach	16,678	<div></div>	8%	158	16,836
Hillsborough	14,241	<div></div>	7%	95	14,336
Orange	13,782	<div></div>	7%	250	14,032
Duval	9,025	<div></div>	5%	121	9,146
Pinellas	8,458	<div></div>	4%	75	8,533
Lee	7,354	<div></div>	4%	144	7,498
Polk	5,175	<div></div>	3%	21	5,196
Collier	4,930	<div></div>	3%	89	5,019
Manatee	3,689	<div></div>	2%	27	3,716
Seminole	3,326	<div></div>	2%	13	3,339
Osceola	2,901	<div></div>	1%	65	2,966
Escambia	2,384	<div></div>	1%	425	2,809
Pasco	2,742	<div></div>	1%	15	2,757
Volusia	2,668	<div></div>	1%	17	2,685
Brevard	2,504	<div></div>	1%	17	2,521
Martin	2,304	<div></div>	1%	16	2,320
St. Lucie	2,171	<div></div>	1%	11	2,182
Sarasota	2,121	<div></div>	1%	39	2,160
Lake	1,826	<div></div>	1%	19	1,845
Leon	1,752	<div></div>	1%	46	1,798
Alachua	1,549	<div></div>	1%	29	1,578
St. Johns	1,303	<div></div>	1%	22	1,325
Hendry	1,085	<div></div>	1%		1,085
Clay	987	<div></div>	1%	4	991
Indian River	920	<div></div>	0%	12	932
Marion	922	<div></div>	0%	5	927
Charlotte	919	<div></div>	0%	3	922
Okaloosa	890	<div></div>	0%	16	906
Santa Rosa	859	<div></div>	0%	8	867
Desoto	748	<div></div>	0%		748
Bay	680	<div></div>	0%	33	713
Suwannee	599	<div></div>	0%	15	614
Hernando	534	<div></div>	0%	7	541

County	FL resident			Non-FL resident	Total
Putnam	538	<div></div>	0%	2	540
Hardee	500	<div></div>	0%	6	506
Gadsden	464	<div></div>	0%	4	468
Okeechobee	421	<div></div>	0%	2	423
Sumter	417	<div></div>	0%	3	420
Jackson	397	<div></div>	0%	9	406
Highlands	402	<div></div>	0%	3	405
Hamilton	381	<div></div>	0%	3	384
Flagler	374	<div></div>	0%	9	383
Citrus	378	<div></div>	0%		378
Monroe	350	<div></div>	0%	17	367
Columbia	358	<div></div>	0%	3	361
Walton	284	<div></div>	0%	34	318
Nassau	303	<div></div>	0%	10	313
Madison	243	<div></div>	0%	4	247
Liberty	244	<div></div>	0%		244
Unknown	44	<div></div>	0%	182	226
Levy	207	<div></div>	0%	3	210
Holmes	196	<div></div>	0%	3	199
Glades	179	<div></div>	0%		179
Washington	118	<div></div>	0%	3	121
Gilchrist	114	<div></div>	0%		114
Baker	102	<div></div>	0%		102
Taylor	97	<div></div>	0%	2	99
Calhoun	97	<div></div>	0%		97
Bradford	95	<div></div>	0%		95
Wakulla	84	<div></div>	0%	3	87
Union	85	<div></div>	0%		85
Dixie	78	<div></div>	0%		78
Jefferson	56	<div></div>	0%	2	58
Gulf	49	<div></div>	0%	5	54
Lafayette	36	<div></div>	0%		36
Franklin	14	<div></div>	0%	1	15
Total	197,076			3,035	200,111

Coronavirus: characteristics of 197,076 Florida resident cases

Data through Jul 4, 2020 verified as of Jul 5, 2020 at 09:25 AM

Data in this report are provisional and subject to change.

The table below includes the cities and counties of residence for cases in Florida residents based on the patient's ZIP Code.

Note that city is not always received as part of the initial notification and may be missing while the case is being investigated.

City and county	Cases
Miami, Dade	28,413
Orlando, Orange	10,474
Tampa, Hillsborough	9,060
Jacksonville, Duval	8,279
Hialeah, Dade	6,551
Fort Lauderdale, Broward	4,673
Hollywood, Broward	4,337
West Palm Beach, Palm Beach	3,973
Saint Petersburg, Pinellas	3,932
Fort Myers, Lee	3,239
Homestead, Dade	3,175
Naples, Collier	3,020
Bradenton, Manatee	2,556
Lake Worth, Palm Beach	2,393
Pompano Beach, Broward	2,380
Kissimmee, Osceola	2,297
Pensacola, Escambia	2,089
Boca Raton, Palm Beach	1,849
Tallahassee, Leon	1,729
Lakeland, Polk	1,646
Immokalee, Collier	1,586
Sarasota, Sarasota	1,580
Lehigh Acres, Lee	1,519
Cape Coral, Lee	1,508
Miami Beach, Dade	1,498
Boynton Beach, Palm Beach	1,489
Clearwater, Pinellas	1,462
Miramar, Broward	1,431
Port Saint Lucie, St. Lucie	1,390
Gainesville, Alachua	1,303
Miami Gardens, Dade	1,202
Winter Haven, Polk	1,144
Stuart, Martin	1,139
Delray Beach, Palm Beach	1,071
Opa Locka, Dade	977
Lake Worth Beach, Palm Beach	930
Brandon, Hillsborough	905
Riverview, Hillsborough	867
Largo, Pinellas	832
Jupiter, Palm Beach	827
Coral Springs, Broward	801
Apopka, Orange	757
Plant City, Hillsborough	754
Missing, Broward	740
Fort Pierce, St. Lucie	737
Indiantown, Martin	732
North Miami Beach, Dade	711
Melbourne, Brevard	707
Sanford, Seminole	689
Sunrise, Broward	683
New Port Richey, Pasco	673
Davie, Broward	668
Arcadia, Desoto	652
Ocala, Marion	634
Winter Park, Orange	616
Deerfield Beach, Broward	610
Belle Glade, Palm Beach	610
Clewiston, Hendry	600
Doral, Dade	592

Coronavirus: characteristics of 197,076 Florida resident cases

Data through Jul 4, 2020 verified as of Jul 5, 2020 at 09:25 AM

Data in this report are provisional and subject to change.

The table below includes the cities and counties of residence for cases in Florida residents based on the patient's ZIP Code.

Note that city is not always received as part of the initial notification and may be missing while the case is being investigated.

City and county	Cases
Royal Palm Beach, Palm Beach	589
Saint Augustine, St. Johns	589
Daytona Beach, Volusia	586
Vero Beach, Indian River	581
Palmetto, Manatee	578
Oviedo, Seminole	573
North Miami, Dade	564
Florida City, Dade	553
Palm Beach Gardens, Palm Beach	547
Altamonte Springs, Seminole	544
Plantation, Broward	532
Port Charlotte, Charlotte	525
Winter Garden, Orange	524
Live Oak, Suwannee	522
Clermont, Lake	509
Palm Bay, Brevard	492
Saint Cloud, Osceola	491
Tamarac, Broward	478
Bonita Springs, Lee	475
Deland, Volusia	463
Margate, Broward	460
Panama City, Bay	458
Orange Park, Clay	453
Deltona, Volusia	447
Ocoee, Orange	444
Land O Lakes, Pasco	441
Seminole, Pinellas	434
Wesley Chapel, Pasco	433
Palm Harbor, Pinellas	424
Pinellas Park, Pinellas	412
Davenport, Polk	411
Okeechobee, Okeechobee	406
Longwood, Seminole	404
Wellington, Palm Beach	397
Coral Gables, Dade	392
Coconut Creek, Broward	379
Lutz, Hillsborough	379
North Lauderdale, Broward	375
Jacksonville Beach, Duval	372
Hallandale, Broward	371
Ruskin, Hillsborough	370
Labelle, Hendry	366
Milton, Santa Rosa	360
Weston, Broward	356
Pembroke Pines, Broward	352
Casselberry, Seminole	349
Windermere, Orange	349
Fort Walton Beach, Okaloosa	342
Missing, Palm Beach	336
Lake City, Columbia	333
Cocoa, Brevard	333
Valrico, Hillsborough	330
Oakland Park, Broward	328
Spring Hill, Hernando	324
Lake Mary, Seminole	320
Quincy, Gadsden	311
Wimauma, Hillsborough	310
Palatka, Putnam	306
Punta Gorda, Charlotte	302

Coronavirus: characteristics of 197,076 Florida resident cases

Data through Jul 4, 2020 verified as of Jul 5, 2020 at 09:25 AM

Data in this report are provisional and subject to change.

The table below includes the cities and counties of residence for cases in Florida residents based on the patient's ZIP Code.

Note that city is not always received as part of the initial notification and may be missing while the case is being investigated.

City and county	Cases
Palm Coast, Flagler	301
Aventura, Dade	301
Tavares, Lake	296
Jasper, Hamilton	294
South Miami, Dade	290
Bartow, Polk	289
South Bay, Palm Beach	288
Winter Springs, Seminole	279
Haines City, Polk	271
Pahokee, Palm Beach	269
Missing, Dade	261
Maitland, Orange	259
North Fort Myers, Lee	243
Miami Lakes, Dade	242
Ponte Vedra Beach, St. Johns	238
Leesburg, Lake	238
North Port, Sarasota	237
Wauchula, Hardee	235
Bristol, Liberty	231
Tarpon Springs, Pinellas	222
Ormond Beach, Volusia	220
Seffner, Hillsborough	219
Kissimmee, Polk	216
Missing, Collier	216
Port Richey, Pasco	214
Fellsmere, Indian River	213
Middleburg, Clay	212
Zephyrhills, Pasco	207
Auburndale, Polk	204
Loxahatchee, Palm Beach	201
Lake Wales, Polk	198
Riviera Beach, Palm Beach	195
Dunedin, Pinellas	194
Dade City, Pasco	190
Lantana, Palm Beach	190
Cantonment, Escambia	185
Port Orange, Volusia	184
Bonifay, Holmes	182
Hudson, Pasco	182
Merritt Island, Brevard	177
Eustis, Lake	176
Mulberry, Polk	175
Sneads, Jackson	175
Palm City, Martin	174
Saint Johns, St. Johns	174
Gulf Breeze, Santa Rosa	174
Odessa, Hillsborough	173
Orange City, Volusia	172
Sebring, Highlands	172
Green Cove Springs, Clay	168
Holiday, Pasco	168
Moore Haven, Glades	165
Lauderhill, Broward	162
Crestview, Okaloosa	162
Estero, Lee	159
Venice, Sarasota	156
Dover, Hillsborough	156
Brooksville, Hernando	155
Wilton Manors, Broward	155

Coronavirus: characteristics of 197,076 Florida resident cases

Data through Jul 4, 2020 verified as of Jul 5, 2020 at 09:25 AM

Data in this report are provisional and subject to change.

The table below includes the cities and counties of residence for cases in Florida residents based on the patient's ZIP Code.

Note that city is not always received as part of the initial notification and may be missing while the case is being investigated.

City and county	Cases
Missing, Hillsborough	154
Titusville, Brevard	154
Bushnell, Sumter	149
Cooper City, Broward	148
Hobe Sound, Martin	148
Atlantic Beach, Duval	147
Dania, Broward	146
Destin, Okaloosa	145
Madison, Madison	143
Debary, Volusia	143
Rockledge, Brevard	143
Parrish, Manatee	141
Navarre, Santa Rosa	139
Sarasota, Manatee	138
Fernandina Beach, Nassau	138
Gibsonton, Hillsborough	136
Missing, Orange	134
Frostproof, Polk	131
Palm Springs, Palm Beach	129
Lauderdale Lakes, Broward	129
Pinecrest, Dade	128
The Villages, Sumter	127
Oldsmar, Pinellas	127
Avon Park, Highlands	126
Key West, Monroe	126
Defuniak Springs, Walton	125
Marianna, Jackson	123
Apollo Beach, Hillsborough	122
Missing, Duval	121
Key Biscayne, Dade	121
Groveland, Lake	119
Fleming Island, Clay	119
Bowling Green, Hardee	118
Fort Meade, Polk	115
Panama City Beach, Bay	113
Mount Dora, Lake	112
Safety Harbor, Pinellas	112
New Smyrna Beach, Volusia	111
Missing, Polk	111
Ponte Vedra, St. Johns	108
Inverness, Citrus	105
Missing, Pasco	104
Ellenton, Manatee	103
Crescent City, Putnam	103
Chiefland, Levy	102
North Palm Beach, Palm Beach	99
Parkland, Broward	98
Lithia, Hillsborough	97
Chipley, Washington	95
Pace, Santa Rosa	93
Missing, Hardee	92
Missing, Hendry	91
Neptune Beach, Duval	90
Sun City Center, Hillsborough	88
Missing, Lee	88
Trenton, Gilchrist	85
Perry, Taylor	84
Missing, Desoto	82
Sebastian, Indian River	82

Coronavirus: characteristics of 197,076 Florida resident cases

Data through Jul 4, 2020 verified as of Jul 5, 2020 at 09:25 AM

Data in this report are provisional and subject to change.

The table below includes the cities and counties of residence for cases in Florida residents based on the patient's ZIP Code.

Note that city is not always received as part of the initial notification and may be missing while the case is being investigated.

City and county	Cases
Alachua, Alachua	82
Santa Rosa Beach, Walton	82
Polk City, Polk	81
Cocoa Beach, Brevard	81
Jacksonville, St. Johns	81
Missing, St. Johns	79
Jennings, Hamilton	78
Palmetto Bay, Dade	77
Blountstown, Calhoun	77
Niceville, Okaloosa	74
Jensen Beach, Martin	74
Satellite Beach, Brevard	74
Summerfield, Marion	74
Crawfordville, Wakulla	73
Starke, Bradford	70
Holly Hill, Volusia	68
Macclenny, Baker	68
Thonotosassa, Hillsborough	67
Missing, Santa Rosa	66
Missing, Brevard	66
Missing, Osceola	65
Missing, Madison	65
Crystal River, Citrus	63
Clearwater Beach, Pinellas	63
Lake Placid, Highlands	60
Newberry, Alachua	60
Yulee, Nassau	60
Lynn Haven, Bay	60
Missing, Citrus	59
Lake Park, Palm Beach	57
Key Largo, Monroe	56
Myakka City, Manatee	56
Shalimar, Okaloosa	55
Carol City, Dade	53
Pierson, Volusia	53
Minneola, Lake	53
Edgewater, Volusia	53
Lake Alfred, Polk	51
Chuluota, Seminole	51
Palm Beach, Palm Beach	50
Mary Esther, Okaloosa	50
Callahan, Nassau	50
Tequesta, Palm Beach	50
Spring Hill, Pasco	49
Tavernier, Monroe	48
Monticello, Jefferson	48
Ave Maria, Collier	48
Englewood, Charlotte	48
Missing, Sarasota	48
Gulfport, Pinellas	48
Williston, Levy	48
Zolfo Springs, Hardee	48
Missing, Marion	47
Belleview, Marion	47
Mascotte, Lake	47
West Melbourne, Brevard	47
Sorrento, Lake	47
Geneva, Seminole	46
Gotha, Orange	46

Coronavirus: characteristics of 197,076 Florida resident cases

Data through Jul 4, 2020 verified as of Jul 5, 2020 at 09:25 AM

Data in this report are provisional and subject to change.

The table below includes the cities and counties of residence for cases in Florida residents based on the patient's ZIP Code.

Note that city is not always received as part of the initial notification and may be missing while the case is being investigated.

City and county	Cases
Havana, Gadsden	45
Marathon, Monroe	45
Nokomis, Sarasota	45
Old Town, Dixie	44
Dunnellon, Marion	44
Cape Canaveral, Brevard	43
Missing, Volusia	42
Indialantic, Brevard	42
Marco Island, Collier	41
Missing, Seminole	41
Lady Lake, Lake	41
Missing, Indian River	41
Trinity, Pasco	41
Missing, St. Lucie	41
De Leon Springs, Volusia	40
Missing, Escambia	37
Medley, Dade	37
Fort Myers Beach, Lee	37
Homosassa, Citrus	37
Missing, Manatee	36
Eagle Lake, Polk	36
Kenneth City, Pinellas	35
Missing, Pinellas	35
Southwest Ranches, Broward	35
Missing, Highlands	34
Lake Butler, Union	34
Montverde, Lake	34
Midway, Gadsden	34
Interlachen, Putnam	34
Missing, Martin	33
Greenacres, Palm Beach	32
Missing, Hernando	32
Mims, Brevard	32
Bronson, Levy	32
Molino, Escambia	31
West Miami, Dade	31
High Springs, Alachua	31
Missing, Monroe	30
Mayo, Lafayette	30
Hilliard, Nassau	30
Rotunda West, Charlotte	30
Lakewood Ranch, Manatee	29
Chattahoochee, Gadsden	29
Cross City, Dixie	29
Flagler Beach, Flagler	29
Zellwood, Orange	29
Missing, Unknown	29
Belle Isle, Orange	29
Raiford, Union	28
Alva, Lee	28
Oxford, Sumter	27
Port Saint Joe, Gulf	27
O Brien, Suwannee	27
Beverly Hills, Citrus	27
Bunnell, Flagler	27
Englewood, Sarasota	26
Wildwood, Sumter	26
Seville, Volusia	26
East Palatka, Putnam	26

Coronavirus: characteristics of 197,076 Florida resident cases

Data through Jul 4, 2020 verified as of Jul 5, 2020 at 09:25 AM

Data in this report are provisional and subject to change.

The table below includes the cities and counties of residence for cases in Florida residents based on the patient's ZIP Code.

Note that city is not always received as part of the initial notification and may be missing while the case is being investigated.

City and county	Cases
Umatilla, Lake	25
South Pasadena, Pinellas	25
Lake Panasoffkee, Sumter	25
Miramar Beach, Walton	25
Missing, Lake	24
South Daytona, Volusia	24
Indian Rocks Beach, Pinellas	24
Lecanto, Citrus	24
El Portal, Dade	24
Christmas, Orange	24
Fort White, Columbia	24
Jay, Santa Rosa	24
Freeport, Walton	23
Coconut Grove, Dade	23
Bal Harbour, Dade	23
Oakland, Orange	23
Gretna, Gadsden	22
Florida Dept Of Corrections, Union	22
Biscayne Park, Dade	22
Fruitland Park, Lake	22
Melbourne Beach, Brevard	22
Archer, Alachua	21
Webster, Sumter	21
Surfside, Dade	21
Keystone Heights, Clay	21
Hernando, Citrus	21
Hallandale Beach, Broward	21
Felda, Hendry	20
Osprey, Sarasota	20
Viera, Brevard	20
Citra, Marion	20
Celebration, Osceola	20
Cutler Bay, Dade	20
Bell, Gilchrist	19
Dundee, Polk	19
Weeki Wachee, Hernando	19
Greenwood, Jackson	19
Sanibel, Lee	19
Baker, Okaloosa	19
Missing, Leon	19
Missing, Jackson	19
Missing, Okaloosa	19
Indian Harbour Beach, Brevard	18
Citrus Springs, Citrus	18
Cottdonale, Jackson	18
Branford, Suwannee	18
Dunnellon, Citrus	17
Sanderson, Baker	17
Missing, Flagler	17
Islamorada, Monroe	17
Howey-In-The-Hills, Lake	16
Canal Point, Palm Beach	16
Atlantis, Palm Beach	16
Wewahitchka, Gulf	16
Hawthorne, Alachua	16
Mcalpin, Suwannee	16
Century, Escambia	16
Juno Beach, Palm Beach	16
Hastings, St. Johns	15

Coronavirus: characteristics of 197,076 Florida resident cases

Data through Jul 4, 2020 verified as of Jul 5, 2020 at 09:25 AM

Data in this report are provisional and subject to change.

The table below includes the cities and counties of residence for cases in Florida residents based on the patient's ZIP Code.

Note that city is not always received as part of the initial notification and may be missing while the case is being investigated.

City and county	Cases
Fern Park, Seminole	15
Missing, Nassau	15
Missing, Okeechobee	15
Hypoluxo, Palm Beach	15
Melrose, Putnam	15
Malabar, Brevard	15
Greenville, Madison	15
Madeira Beach, Pinellas	15
Hialeah Gardens, Dade	15
Ocklawaha, Marion	15
Unknown, Orange	15
Poinciana, Polk	14
Missing, Walton	14
North Bay Village, Dade	14
Satsuma, Putnam	14
Lauderdale By The Sea, Broward	14
Lee, Madison	14
Grand Island, Lake	14
Lawtey, Bradford	14
Sunny Isles Beach, Dade	14
Center Hill, Sumter	14
Temple Terrace, Hillsborough	14
San Antonio, Pasco	13
Altha, Calhoun	13
Missing, Gadsden	13
Glen Saint Mary, Baker	13
Missing, Clay	13
Miami Springs, Dade	13
Youngstown, Bay	13
Vernon, Washington	12
Morriston, Levy	12
Osteen, Volusia	12
Lake Hamilton, Polk	12
Carrollwood, Hillsborough	12
Pomona Park, Putnam	12
Babson Park, Polk	12
Ochopee, Collier	12
Big Pine Key, Monroe	12
Bokeelia, Lee	12
Princeton, Dade	11
Belleair Beach, Pinellas	11
Malone, Jackson	11
Elkton, St. Johns	11
Kendall, Dade	11
Grand Ridge, Jackson	11
Greensboro, Gadsden	10
Alafaya, Orange	10
Reddick, Marion	10
Bradenton Beach, Manatee	10
The Villages, Lake	10
Southport, Bay	10
Yalaha, Lake	10
Missing, Levy	10
West Park, Broward	10
Crystal Beach, Pinellas	9
Bryceville, Nassau	9
Grant-Valkaria, Brevard	9
Naranja, Dade	9
Odessa, Pasco	9

Coronavirus: characteristics of 197,076 Florida resident cases

Data through Jul 4, 2020 verified as of Jul 5, 2020 at 09:25 AM

Data in this report are provisional and subject to change.

The table below includes the cities and counties of residence for cases in Florida residents based on the patient's ZIP Code.

Note that city is not always received as part of the initial notification and may be missing while the case is being investigated.

City and county	Cases
Missing, Gilchrist	9
Missing, Holmes	9
Haverhill, Palm Beach	9
Lake Helen, Volusia	9
Lighthouse Point, Broward	9
Sweetwater, Dade	9
Coleman, Sumter	9
Waverly, Polk	9
Miami Shores, Dade	8
Okahumpka, Lake	8
Patrick Air Force Base, Brevard	8
Oak Hill, Volusia	8
San Mateo, Putnam	8
Anthony, Marion	8
Graceville, Jackson	8
Hollister, Putnam	8
Fort Denaud, Hendry	8
Waldo, Alachua	8
Micanopy, Alachua	8
Holmes Beach, Manatee	8
Belleair, Pinellas	8
Eglin Air Force Base, Okaloosa	8
Weirsdale, Marion	8
Silver Springs, Marion	8
Missing, Bay	8
Missing, Washington	7
Heathrow, Seminole	7
Hosford, Liberty	7
Venus, Highlands	7
Sumterville, Sumter	7
Missing, Suwannee	7
Lake Suzy, Desoto	7
Callaway, Bay	7
Bay Harbor Islands, Dade	7
Nocatee, Desoto	7
Wellborn, Suwannee	7
Placida, Charlotte	7
Ona, Hardee	7
Mcdavid, Escambia	7
Alford, Jackson	7
Barefoot Bay, Brevard	7
White Springs, Hamilton	7
Lady Lake, Sumter	7
Edgewood, Orange	7
Bellview, Escambia	7
Reunion, Osceola	7
Singer Island, Palm Beach	7
Fruit Cove, St. Johns	7
Matlacha, Lee	6
Missing, Liberty	6
Missing, Charlotte	6
Steinhatchee, Taylor	6
Pinetta, Madison	6
Missing, Jefferson	6
Astatula, Lake	6
Missing, Glades	6
Golden Beach, Dade	6
Floral City, Citrus	6
Saint James City, Lee	6

Coronavirus: characteristics of 197,076 Florida resident cases

Data through Jul 4, 2020 verified as of Jul 5, 2020 at 09:25 AM

Data in this report are provisional and subject to change.

The table below includes the cities and counties of residence for cases in Florida residents based on the patient's ZIP Code.

Note that city is not always received as part of the initial notification and may be missing while the case is being investigated.

City and county	Cases
Valparaiso, Okaloosa	6
Missing, Gulf	6
Altoona, Lake	6
Astor, Lake	6
Baldwin, Duval	6
Village Of Palmetto Bay, Dade	6
Laurel Hill, Okaloosa	6
Mangonia Park, Palm Beach	5
Sun City, Hillsborough	5
Goulds, Dade	5
Longboat Key, Manatee	5
Santa Fe, Alachua	5
Summerland Key, Monroe	5
Terra Ceia, Manatee	5
Paisley, Lake	5
Dania Beach, Broward	5
Treasure Island, Pinellas	5
Missing, Sumter	5
Bayonet Point, Pasco	5
Carrabelle, Franklin	5
North Redington Beach, Pinellas	5
Sopchoppy, Wakulla	5
Sebastian, Brevard	5
Saint Pete Beach, Pinellas	5
Fountain, Bay	5
Labelle, Glades	5
Florahome, Putnam	5
Missing, Baker	4
Long Boat Key, Manatee	4
Missing, Taylor	4
Eastpoint, Franklin	4
Kathleen, Polk	4
Homeland, Polk	4
Lutz, Pasco	4
Tierra Verde, Pinellas	4
Siesta Key, Sarasota	4
Inlet Beach, Walton	4
Kissimmee, Orange	4
Apalachicola, Franklin	4
Ponce Inlet, Volusia	4
Destin, Walton	4
Missing, Dixie	4
Kindred, Osceola	4
Poinciana, Osceola	4
Holt, Okaloosa	4
Missing, Lafayette	4
Tioga, Alachua	4
Missing, Bradford	4
Ocean Ridge, Palm Beach	4
Missing, Alachua	4
Lorida, Highlands	3
Harmony, Osceola	3
Celebration, Orange	3
Northdale, Hillsborough	3
Wahneta, Polk	3
Balm, Hillsborough	3
Bascom, Jackson	3
Buena Ventura Lakes, Osceola	3
Campbellton, Jackson	3

Coronavirus: characteristics of 197,076 Florida resident cases

Data through Jul 4, 2020 verified as of Jul 5, 2020 at 09:25 AM

Data in this report are provisional and subject to change.

The table below includes the cities and counties of residence for cases in Florida residents based on the patient's ZIP Code.

Note that city is not always received as part of the initial notification and may be missing while the case is being investigated.

City and county	Cases
Perdido Key, Escambia	3
Key Colony Beach, Monroe	3
Indian Lake Estates, Polk	3
Missing, Calhoun	3
Walnut Hill, Escambia	3
Westville, Holmes	3
Brooker, Bradford	3
Candler, Marion	3
La Crosse, Alachua	3
Mango, Hillsborough	3
Mayport, Duval	3
Intercession City, Osceola	3
Captiva, Lee	3
Belleair Bluffs, Pinellas	3
Azalea Park, Orange	3
Tice, Lee	3
Tyndall Air Force Base, Bay	3
Ponce De Leon, Walton	3
Palmdale, Glades	3
Bonifay, Washington	3
Cloud Lake, Palm Beach	3
Hampton, Bradford	3
Pensacola Beach, Santa Rosa	3
Winter Park, Seminole	3
Yankeetown, Levy	2
Unknown, Dade	2
Plymouth, Orange	2
Forest City, Orange	2
Davenport, Osceola	2
Dinsmore, Duval	2
Alturas, Polk	2
Palma Sola, Manatee	2
Sydney, Hillsborough	2
Bay Pines, Pinellas	2
Cudjoe Key, Monroe	2
Cutler Ridge, Dade	2
Lamont, Jefferson	2
Lealman, Pinellas	2
Missing, Hamilton	2
Missing, Wakulla	2
Clarksville, Calhoun	2
Hawthorne, Putnam	2
Lockhart, Orange	2
Miami, Unknown	2
Kinard, Calhoun	2
Ridge Manor, Pasco	2
University Park, Manatee	2
Graceville, Holmes	2
Fort Mccoy, Marion	2
Fisher Island, Dade	2
Boca Grande, Lee	2
Pembroke Park, Broward	2
Pine Hills, Orange	2
North Venice, Sarasota	2
Tallevast, Manatee	2
Stock Island, Monroe	2
Saint Marks, Wakulla	2
Rubonia, Manatee	2
San Carlos Park, Lee	2

Coronavirus: characteristics of 197,076 Florida resident cases

Data through Jul 4, 2020 verified as of Jul 5, 2020 at 09:25 AM

Data in this report are provisional and subject to change.

The table below includes the cities and counties of residence for cases in Florida residents based on the patient's ZIP Code.

Note that city is not always received as part of the initial notification and may be missing while the case is being investigated.

City and county	Cases
Sharpes, Brevard	2
Lehigh, Lee	2
Longboat Key, Sarasota	2
Earleton, Alachua	2
Eatonville, Orange	2
Aloma, Orange	2
Branford, Lafayette	2
Gulf Breeze, Escambia	2
Hernando Beach, Hernando	2
Hiawassee, Orange	2
Eloise, Polk	2
Centerville, Leon	2
Unknown, Seminole	2
Sugarloaf, Monroe	2
Wabasso, Indian River	2
Ybor City, Hillsborough	2
Braden River, Manatee	2
Elfers, Pasco	2
Fpo, Duval	2
City Of Sunrise, Broward	2
Eaton Park, Polk	2
Miromar Lakes, Lee	2
Missing, Putnam	2
Mount Plymouth, Lake	2
Highland City, Polk	2
Kenansville, Osceola	2
Gulf Stream, Palm Beach	2
West Palm Beach, Unknown	2
Port Saint John, Brevard	2
Perrine, Dade	2
Saint Leo, Pasco	2
Unknown Out Of Area, Palm Beach	2
Sand Lake, Orange	2
Durant, Hillsborough	2
At Large, Broward	2
Goodland, Collier	2
Miami, Martin	2
Nobleton, Hernando	2
Pasadena, Pinellas	1
Pensacola Naval Hospital, Escambia	1
Mount Dora, Orange	1
New Church, Palm Beach	1
Missing, Franklin	1
Litchfield Park, Unknown	1
Lauderhill, Unknown	1
Franklin, Orange	1
Haines City, Orange	1
Jena, Taylor	1
Lake Butler, Bradford	1
Altamonte Springs, Orange	1
Apo, Collier	1
Unknown, Duval	1
San Pao, Pinellas	1
Point Washington, Walton	1
West Delray Beach, Palm Beach	1
West Hollywood, Broward	1
Hillsboro Beach, Broward	1
Holder, Citrus	1
Homeless, Palm Beach	1

Coronavirus: characteristics of 197,076 Florida resident cases

Data through Jul 4, 2020 verified as of Jul 5, 2020 at 09:25 AM

Data in this report are provisional and subject to change.

The table below includes the cities and counties of residence for cases in Florida residents based on the patient's ZIP Code.

Note that city is not always received as part of the initial notification and may be missing while the case is being investigated.

City and county	Cases
Indian River Shores, Indian River	1
Indian Rock Beach, Pinellas	1
New Smyrna, Volusia	1
Everglades National Park, Dade	1
Fanning Springs, Gilchrist	1
Fernandina, Nassau	1
Georgetown, Putnam	1
Cedar Key, Levy	1
Dowling Park, Suwannee	1
Cypress Gardens, Polk	1
Pooler, Broward	1
Okeechobee, Martin	1
Oneco, Manatee	1
Port Richey, Alachua	1
Salem, Taylor	1
Samoset, Manatee	1
South Palm Beach, Palm Beach	1
Westchase, Hillsborough	1
Twentynine Palms, Broward	1
Union Park, Orange	1
Virginia Gardens, Dade	1
Wakulla Springs, Wakulla	1
Windermere, Unknown	1
Westville, Walton	1
Venice, Manatee	1
Saint Johns, Duval	1
Alpharetta, Broward	1
Clarcona, Orange	1
Enterprise, Volusia	1
Ft Pierce, St. Lucie	1
Homeless, Hillsborough	1
Homeless, Monroe	1
Homeless, Pinellas	1
Hutchinson Island, St. Lucie	1
Lacoochee, Pasco	1
Lamont, Taylor	1
Miccosukee, Leon	1
Pensacola Beach, Escambia	1
Pine Castle, Orange	1
Cape Haze, Charlotte	1
Alva, Escambia	1
Bayou George, Bay	1
Clearwater, Pasco	1
Clewiston, Palm Beach	1
Homossa, Orange	1
Hudson, Pinellas	1
Sorrento, Orange	1
Sanford, Orange	1
Rivera Beach, Palm Beach	1
Perth Amboy, Hillsborough	1
Pompano Beach, Unknown	1
Steinhatchee, Dixie	1
Uknown, Unknown	1
University Of Tampa, Hillsborough	1
Okeechobee, St. Lucie	1
Oklawaha, Marion	1
Palm Shores, Brevard	1
Parker, Bay	1
Missing, Union	1

Coronavirus: characteristics of 197,076 Florida resident cases

Data through Jul 4, 2020 verified as of Jul 5, 2020 at 09:25 AM

Data in this report are provisional and subject to change.

The table below includes the cities and counties of residence for cases in Florida residents based on the patient's ZIP Code.

Note that city is not always received as part of the initial notification and may be missing while the case is being investigated.

City and county	Cases
Sewalls Point, Martin	1
South Daytona Beach, Volusia	1
Switzerland, St. Johns	1
Tampa Palms, Hillsborough	1
Tampa, Pinellas	1
Tangerine, Orange	1
Tewksbury, Orange	1
Unknown, Columbia	1
Unknown, Palm Beach	1
Welaka, Putnam	1
Wesley Chapel, Alachua	1
Buckingham, Lee	1
Arnondale, Hillsborough	1
Aollywoss, Dade	1
Bay Lake, Orange	1
Caryville, Washington	1
Bradley, Polk	1
Estero, Collier	1
Clermont, Orange	1
Clermont, Polk	1
Fl, Dade	1
Fellsmele, Brevard	1
Inlet Beach, Bay	1
Jacksonville, Unknown	1
Milton, Escambia	1
Manalapan, Palm Beach	1
Unknown, Broward	1
Valkaria, Brevard	1
Venice, Hillsborough	1
West Bradenton, Manatee	1
West Villages, Sarasota	1
Wintergarden, Orange	1
River Ranch, Polk	1
Quail Heights, Dade	1
Seven Springs, Pasco	1
Tallahassee, Unknown	1
The Villages, Marion	1
Lake Como, Putnam	1
Lake Monroe, Seminole	1
Laud-By-The-Sea, Broward	1
Loxahatchee Groves, Palm Beach	1
Palm Beach Shores, Palm Beach	1
Port Everglades, Broward	1
Jupiter, Duval	1
Indian Shores, Pinellas	1
Long Key, Monroe	1
Greenacres, Unknown	1
Duette, Manatee	1
Everglades City, Collier	1
Fwb, Walton	1
Gibsonia, Polk	1
Bayshore Gardens, Manatee	1
Bonita Springs, Collier	1
Anna Maria, Manatee	1
Apopka, Unknown	1
Bonita Springs, Manatee	1
Saint Cloud, Manatee	1
Redington Beach, Pinellas	1
Valrico, Orange	1

Coronavirus: characteristics of 197,076 Florida resident cases

Data through Jul 4, 2020 verified as of Jul 5, 2020 at 09:25 AM

Data in this report are provisional and subject to change.

The table below includes the cities and counties of residence for cases in Florida residents based on the patient's ZIP Code.

Note that city is not always received as part of the initial notification and may be missing while the case is being investigated.

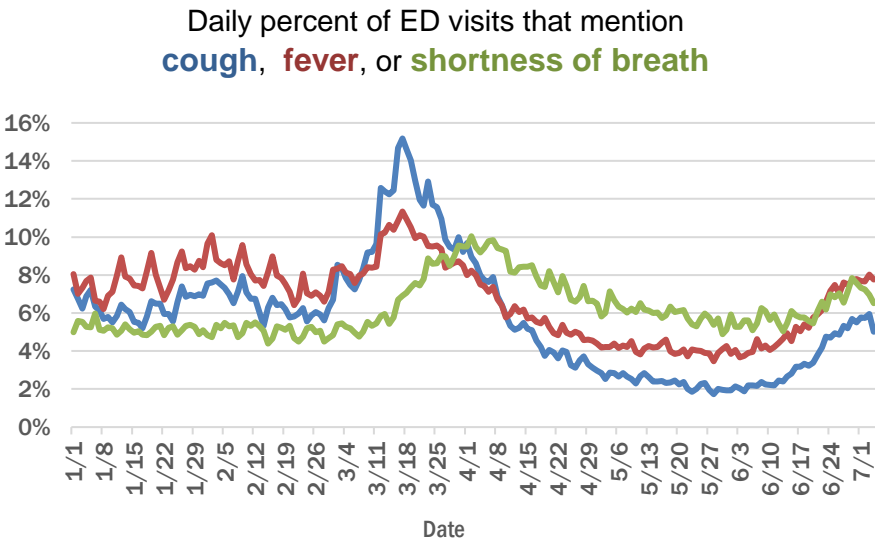
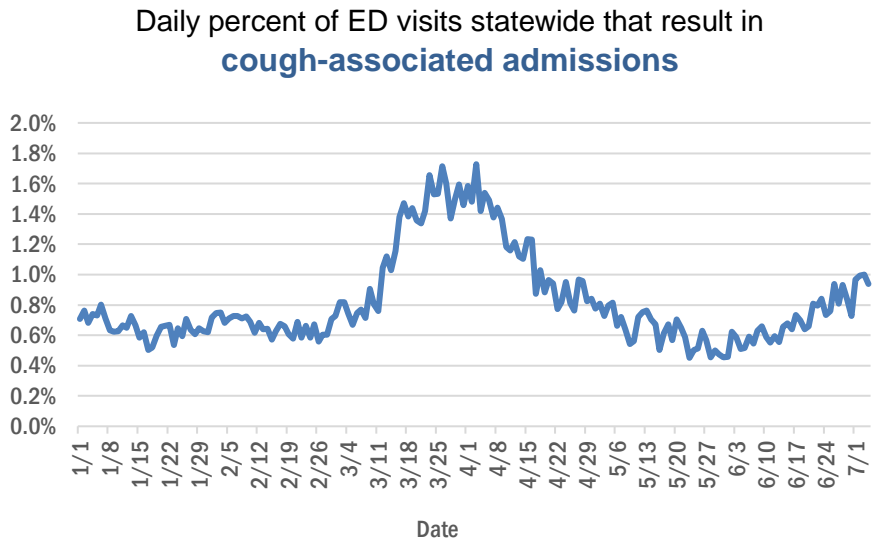
City and county	Cases
Town N Country, Hillsborough	1
Winterpark, Unknown	1
Ocala, Unknown	1
Panacea, Wakulla	1
Paxton, Walton	1
Penney Farms, Clay	1
Orlando, Brevard	1
Loughman, Polk	1
Florida State University, Leon	1
Champions Gate, Polk	1
Chokoloskee, Collier	1
Gastonia, Polk	1
Goldenrod, Seminole	1
Green Acres, Palm Beach	1
Lake City, Suwannee	1
Lake Harbor, Palm Beach	1
Logwood, Seminole	1
Saint Petersburg, Dade	1
Smiawic, Dade	1
Scottsmoor, Brevard	1
Wimauma, Manatee	1
Total	197,076

Coronavirus: additional surveillance information

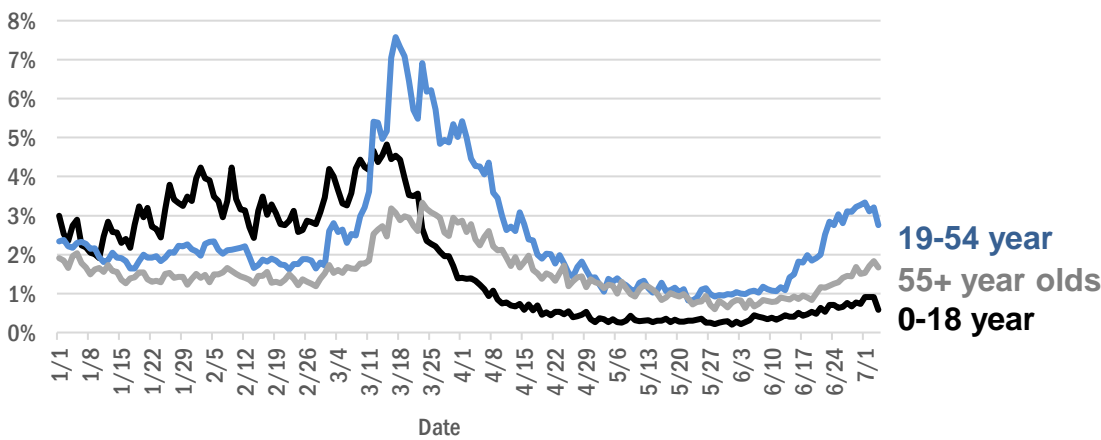
Data through Jul 4, 2020 verified as of Jul 5, 2020 at 09:25 AM

Data in this report are provisional and subject to change.

Statewide emergency department (ED) chief complaint and admission data



Daily percent of ED visits statewide that mention cough by age group



The Electronic Surveillance System for the Early Notification of Community-Based Epidemics (ESSENCE-FL) includes chief complaint data from 211 of 212 Florida EDs. Data are transmitted electronically to ESSENCE-FL daily or hourly.

Coronavirus: All persons with tests reported

Data through Jul 4, 2020 verified as of Jul 5, 2020 at 09:25 AM

Data in this report are provisional and subject to change.

The table below includes persons with laboratory results that the Department of Health has received electronically or by mail/fax for Florida residents and non-Florida residents.

County	Awaiting testing	Inconclusive	Negative	Positive	Percent positive	Total tested
Dade	168	442	309,170	47,011	13%	356,623
Broward	45	113	204,497	21,239	9%	225,849
Palm Beach	172	250	143,397	16,836	10%	160,483
Hillsborough	119	93	127,191	14,336	10%	141,620
Orange	134	180	140,763	14,032	9%	154,975
Duval	56	168	109,351	9,146	8%	118,665
Pinellas	45	43	96,214	8,533	8%	104,790
Lee	21	22	57,040	7,498	12%	64,560
Polk	20	32	47,464	5,196	10%	52,692
Collier	106	23	32,257	5,019	13%	37,299
Manatee	3	22	42,445	3,716	8%	46,183
Seminole	20	32	37,877	3,339	8%	41,248
Osceola	57	49	27,288	2,966	10%	30,303
Escambia	2	12	34,942	2,809	7%	37,763
Pasco	34	14	36,682	2,757	7%	39,453
Volusia	7	30	41,061	2,685	6%	43,776
Brevard	2	9	49,242	2,521	5%	51,772
Martin	35	24	15,603	2,320	13%	17,947
St. Lucie	89	11	22,643	2,182	9%	24,836
Sarasota	8	5	38,626	2,160	5%	40,791
Lake	36	22	35,838	1,845	5%	37,705
Leon	10	70	32,265	1,798	5%	34,133
Alachua		11	43,619	1,578	3%	45,208
St. Johns	24	26	21,839	1,325	6%	23,190
Hendry		6	4,575	1,085	19%	5,666
Clay		13	18,149	991	5%	19,153
Indian River	25	3	15,172	932	6%	16,107
Marion	139	5	24,946	927	4%	25,878
Charlotte	6	5	12,597	922	7%	13,524
Okaloosa	2	15	14,717	906	6%	15,638
Santa Rosa	1	3	13,403	867	6%	14,273
Desoto	14	6	4,616	748	14%	5,370
Bay	3	13	8,162	713	8%	8,888
Suwannee		4	3,969	614	13%	4,587
Hernando	1	2	10,724	541	5%	11,267
Putnam	2	1	6,831	540	7%	7,372
Hardee	1	2	2,308	506	18%	2,816
Gadsden	3	12	5,895	468	7%	6,375
Okeechobee		1	3,599	423	11%	4,023
Sumter	23	7	7,928	420	5%	8,355
Jackson	1	10	5,240	406	7%	5,656
Highlands	6	16	9,516	405	4%	9,937
Hamilton	1	2	2,566	384	13%	2,952
Flagler	2	5	8,471	383	4%	8,859
Citrus	2	3	10,473	378	3%	10,854
Monroe	41		6,115	367	6%	6,482
Columbia	3	5	6,128	361	6%	6,494
Walton		4	3,650	318	8%	3,972

Coronavirus: All persons with tests reported

Data through Jul 4, 2020 verified as of Jul 5, 2020 at 09:25 AM

Data in this report are provisional and subject to change.

The table below includes persons with laboratory results that the Department of Health has received electronically or by mail/fax for Florida residents and non-Florida residents.

County	Awaiting testing	Inconclusive	Negative	Positive	Percent positive	Total tested
Nassau	9	5	7,810	313	4%	8,128
Madison	1	5	2,026	247	11%	2,278
Liberty		2	2,141	244	10%	2,387
Unknown		14	2,577	226	8%	2,817
Levy		2	3,314	210	6%	3,526
Holmes		4	2,427	199	8%	2,630
Glades		1	523	179	25%	703
Washington	3	1	1,799	121	6%	1,921
Gilchrist	1	3	2,328	114	5%	2,445
Baker	1		1,933	102	5%	2,035
Taylor		2	1,457	99	6%	1,558
Calhoun		3	891	97	10%	991
Bradford	1	2	2,707	95	3%	2,804
Wakulla	1	4	2,373	87	4%	2,464
Union	1		2,347	85	3%	2,432
Dixie			1,395	78	5%	1,473
Jefferson		1	1,290	58	4%	1,349
Gulf	1		1,822	54	3%	1,876
Lafayette		1	551	36	6%	588
Franklin			1,313	15	1%	1,328
Total	1,508	1,896	2,000,088	200,111	9%	2,202,095

Coronavirus: testing by laboratory

Data through Jul 4, 2020 verified as of Jul 5, 2020 at 09:25 AM

Data in this report are provisional and subject to change.

The numbers in the table below represent the number for whom test results were received by the Department of Health. A person can be tested by more than one laboratory and can have both positive and negative results. **Therefore, the sum of the numbers in each column will be larger than the total number of people tested.**

Reporting lab	Inconclusive	Negative	Positive	Percent positive	Total
QUEST DIAGNOSTICS - TAMPA	960	403,984	43,839	10%	448,783
LABORATORY CORPORATION OF AMERICA	299	302,417	34,034	10%	336,750
BIO REFERENCE LABORATORIES, INC	903	266,228	34,592	11%	301,723
GENETWORX	654	193,890	10,984	5%	205,528
NORTHWEST LABORATORY	46	96,388	1,683	2%	98,117
ADVENT HEALTH LAB	87	84,593	8,280	9%	92,960
REALTOX LABS LLC	563	84,438	5,464	6%	90,465
MAYO CLINIC LABORATORIES	62	39,840	2,686	6%	42,588
QUEST DIAGNOSTICS NICHOLS INSTITUTE, INC.	96	33,197	2,974	8%	36,267
MEDICAL DIAGNOSTIC LABORATORIES	210	32,626	3,342	9%	36,178
BIOCOLLECTIONS WORLDWIDE, INC	38	30,345	3,963	12%	34,346
BAYCARE LABORATORIES LLC	77	31,908	2,194	6%	34,179
SACRED HEART HOSPITAL LABORATORY	2	30,292	2,187	7%	32,481
UF PATHLABS	33	28,994	652	2%	29,679
TAMPA GENERAL HOSPITAL	4	27,748	1,728	6%	29,480
MEMORIAL REGIONAL HOSPITAL SOUTH	14	24,882	3,120	11%	28,016
TESTING MATTERS INC		24,652	2,987	11%	27,639
ORLANDO REG MED CENTER CLINICAL LAB	116	25,934	1,515	5%	27,565
DIATHERIX LABORATORIES		23,294	2,198	9%	25,492
BPHL-JACKSONVILLE	7	21,174	3,312	14%	24,493
JACKSON MEMORIAL HOSPITAL CLINICAL LAB	67	20,543	3,482	14%	24,092
ARUP LABORATORIES		21,517	947	4%	22,464
VIRACOR-EUROFINS LABORATORIES		16,245	4,671	22%	20,916
BPHL-MIAMI	162	16,371	2,912	15%	19,445
BPHL-TAMPA (SPECTRUM BLVD)	43	15,214	2,001	12%	17,258
SHANDS AT THE UNIVERSITY OF FLORIDA	3	14,615	411	3%	15,029
ST JOSEPHS HOSPITAL SOUTH LABORATORY	30	10,891	1,899	15%	12,820
LAKELAND REGIONAL MEDICAL CENTER	20	11,047	893	7%	11,960
AIT LABORATORIES		10,717	953	8%	11,670
CAPE CORAL HOSPITAL CLINICAL LABORATORY		9,534	1,337	12%	10,871
ST VINCENT'S MEDICAL CENTER - RIVERSIDE	1	10,005	622	6%	10,628
MEMORIAL HOSPITAL- MIRAMAR	8	8,718	1,869	18%	10,595
ARNOLD PALMER MEDICAL CENTER CLINICAL LAB	113	8,978	1,443	14%	10,534
BROWARD GENERAL MEDICAL CENTER-CLINICAL LAB	2	8,964	641	7%	9,607
BAPTIST HOSPITAL OF MIAMI CLINICAL LABORATORY	4	8,094	1,089	12%	9,187
WALGREENS	3	8,099	966	11%	9,068
STATLAB_MOBILE		8,159	566	6%	8,725
CLEVELAND CLINIC HOSPITAL LAB	3	7,745	491	6%	8,239
SHANDS JACKSONVILLE MEDICAL CENTER INC	23	7,860	308	4%	8,191
DELRAY MEDICAL CENTER	2	6,337	1,440	19%	7,779
FLORIDA HOSPITAL - TAMPA	5	7,411	355	5%	7,771
NAPLES COMMUNITY HOSPITAL	9	7,146	616	8%	7,771
LABCORP BURLINGTON (ELR)	2	7,420	279	4%	7,701
BAPTIST MEDICAL CENTER JACKSONVILLE	1	7,223	327	4%	7,551
ADVENTHEALTH DAYTONA BEACH	3	7,063	280	4%	7,346
REAL DIAGNOSTICS	77	6,449	465	7%	6,991
ST JOSEPHS HOSPITAL LABORATORY	6	6,027	508	8%	6,541

Coronavirus: testing by laboratory

Data through Jul 4, 2020 verified as of Jul 5, 2020 at 09:25 AM

Data in this report are provisional and subject to change.

The numbers in the table below represent the number for whom test results were received by the Department of Health. A person can be tested by more than one laboratory and can have both positive and negative results. **Therefore, the sum of the numbers in each column will be larger than the total number of people tested.**

Reporting lab	Inconclusive	Negative	Positive	Percent positive	Total
INTEGRATED REGIONAL LABORATORIES LLP		5,697	559	9%	6,256
MOUNT SINAI MEDICAL CENTER	2	5,705	429	7%	6,136
FLORIDA HOSPITAL WESLEY CHAPEL	10	5,436	617	10%	6,063
JFK MEDICAL CENTER LAB	1	5,039	948	16%	5,988
SARASOTA MEMORIAL HOSPITAL MAIN LAB	12	5,436	354	6%	5,802
MORTON PLANT HOSPITAL-ADLER INSTITUTE	5	5,291	286	5%	5,582
PALMETTO GENERAL HOSPITAL LAB	2	4,701	875	16%	5,578
SOUTH MIAMI HOSPITAL LAB	8	4,752	592	11%	5,352
MEMORIAL REGIONAL HOSPITAL CLINICAL LABORATORY	4	5,006	310	6%	5,320
TALLAHASSEE MEMORIAL HOSPITAL	1	4,924	210	4%	5,135
BAPTIST HOSPITAL OF MIAMI MOLECULAR DIAGNOSTICS	35	4,285	537	11%	4,857
SAINT MARY'S MEDICAL CENTER	2	4,325	470	10%	4,797
INDIAN RIVER MEDICAL CENTER LAB		4,533	153	3%	4,686
CORAL SPRINGS MED CTR		4,125	534	11%	4,659
MEDICAL CENTER OF TRINITY CLINICAL LABORATORY		3,671	963	21%	4,634
LARKIN COMMUNITY HOSPITAL	10	3,904	682	15%	4,596
LEE HEALTH COCONUT POINT CLINICAL LAB		3,473	1,017	23%	4,490
OVIEDO MEDICAL CENTER		3,293	1,156	26%	4,449
WELLINGTON REGIONAL MED CTR LAB	2	3,976	470	11%	4,448
NORTH FLORIDA REGIONAL MEDICAL CENTER		4,217	203	5%	4,420
FLORIDA HOSPITAL WATERMAN LABORATORY	8	4,155	157	4%	4,320
AEGIS SCIENCES CORPORATION	20	3,795	112	3%	3,927
WEST KENDALL BAPTIST HOSPITAL LABORATORY	2	3,282	551	14%	3,835
ECCO LAB GROUP CO	99	3,059	669	17%	3,827
MEMORIAL HOSPITAL WEST LABORATORY SERVICES	6	3,385	428	11%	3,819
NICKLAUS CHILDREN'S HOSPITAL	4	3,527	267	7%	3,798
BRANDON REGIONAL HOSPITAL		3,242	474	13%	3,716
HOMESTEAD HOSPITAL CLINICAL LABORATORY		3,113	545	15%	3,658
JUPITER MEDICAL CENTER LAB	7	3,199	438	12%	3,644
ST ANTHONY'S HOSPITAL LAB	8	3,228	326	9%	3,562
NEW YORK STATE ELR - SUNRISE MEDICAL LABORATORIES		3,288	77	2%	3,365
ST VINCENTS CLAY COUNTY		3,061	265	8%	3,326
ELABNETWORK		2,907	340	10%	3,247
LARGO MEDICAL CENTER		2,679	502	16%	3,181
MEMORIAL HOSPITAL JACKSONVILLE	7	2,659	409	13%	3,075
QUEST DIAGNOSTICS NICHOLS INSTITUTE - SJC (ELR)	4	2,732	308	10%	3,044
ORANGE PARK MEDICAL CENTER	4	2,358	489	17%	2,851
POINCIANA MEDICAL CENTER		2,081	765	27%	2,846
ST LUCIE MEDICAL CENTER		2,382	433	15%	2,815
WINTER HAVEN HOSPITAL CLINICAL LABORATORY	1	2,538	270	10%	2,809
LAWNWOOD REGIONAL MEDICAL CENTER		2,444	313	11%	2,757
MEASE COUNTRYSIDE LAB		2,579	151	6%	2,730
MOFFITT CANCER CENTER	5	2,634	17	1%	2,656
BAPTIST MEDICAL CENTER SOUTH		2,509	132	5%	2,641

Coronavirus: testing by laboratory

Data through Jul 4, 2020 verified as of Jul 5, 2020 at 09:25 AM

Data in this report are provisional and subject to change.

The numbers in the table below represent the number for whom test results were received by the Department of Health. A person can be tested by more than one laboratory and can have both positive and negative results. **Therefore, the sum of the numbers in each column will be larger than the total number of people tested.**

Reporting lab	Inconclusive	Negative	Positive	Percent positive	Total
GOOD SAMARITAN MEDICAL CENTER LAB	1	2,308	311	12%	2,620
MANATEE MEMORIAL HOSPITAL		2,405	191	7%	2,596
MARTIN HOSPITAL SOUTH LAB		2,504	90	3%	2,594
FLORIDA HOSPITAL HEARTLAND MED CTR CLINICAL LAB	1	2,355	101	4%	2,457
CLEVELAND CLINIC MARTIN SOUTH HOSPITAL		2,288	148	6%	2,436
NCH NORTH NAPLES HOSPITAL LAB		2,183	235	10%	2,418
GULF COAST MEDICAL CENTER MICROLAB		1,936	462	19%	2,398
HALIFAX MEDICAL CENTER LAB	3	2,140	254	11%	2,397
WESTSIDE REGIONAL MED CTR	1	2,057	270	12%	2,328
OSCEOLA REGIONAL MEDICAL CENTER	1	2,189	120	5%	2,310
Lee Memorial Hospital		1,940	303	14%	2,243
AVENTURA HOSPITAL LAB		1,758	483	22%	2,241
CORAL GABLES HOSPITAL CLINICAL LABORATORY		1,837	377	17%	2,214
BROWARD HEALTH NORTH CLINICAL LABORATORY		1,998	204	9%	2,202
WEST BOCA MEDICAL CENTER LAB		2,047	152	7%	2,199
LAKEWOOD RANCH MEDICAL CENTER		1,953	239	11%	2,192
PALM BEACH GARDENS MEDICAL CTR LAB		1,998	155	7%	2,153
BAPTIST HOSPITAL LABORATORY	4	1,920	213	10%	2,137
HEALTH PARK MEDICAL CENTER CLINICAL LAB		1,781	355	17%	2,136
MARTIN MEMORIAL HEALTH SYSTEM LABORATORY		1,937	162	8%	2,099
NORTH SHORE MEDICAL CENTER		1,674	414	20%	2,088
DOCTORS HOSPITAL	2	1,806	275	13%	2,083
MERCY HOSPITAL A CAMPUS OF PLANTATION GEN HOSP LAB		1,741	326	16%	2,067
NORTHWEST MEDICAL CENTER		1,716	322	16%	2,038
BIO COLLECTIONS INC	2	1,632	380	19%	2,014
PALMS WEST HOSPITAL LAB		1,633	353	18%	1,986
FLORIDA HOSPITAL ZEPHYRHILLS		1,890	59	3%	1,949
BETHESDA HOSPITAL EAST		1,752	169	9%	1,921
WEST MARION COMMUNITY HOSPITAL LAB		1,595	295	16%	1,890
NEMOURS CHILDRENS HOSPITAL		1,825	32	2%	1,857
QUEST DIAGNOSTICS NICHOLS	8	1,540	283	15%	1,831
FLORIDA HOSPITAL FLAGLER	2	1,737	75	4%	1,814
CARDIOTROPIC LABS		1,443	303	17%	1,746
ST JOSEPHS NORTH HOSPITAL LAB		1,576	155	9%	1,731
OAK HILL HOSPITAL		1,653	60	4%	1,713
FLORIDA MEDICAL CENTER - A CAMPUS OF NORTH SHORE	2	1,516	193	11%	1,711
Capital Regional Medical Ctr		1,371	247	15%	1,618
IMPERIAL POINT MEDICAL CENTER		1,477	100	6%	1,577
FLORIDA HOSPITAL DELAND		1,371	197	13%	1,568
WESTCHESTER HOSPITAL	10	1,343	208	13%	1,561
BLAKE MEDICAL CENTER		1,356	182	12%	1,538
MORTON PLANT-MEASE		1,458	68	4%	1,526
OPTEO LABORATORY		1,500	24	2%	1,524
HIGHLANDS REGIONAL MEDICAL CENTER		1,226	291	19%	1,517
QUEST DIAGNOSTICS	2	1,285	209	14%	1,496

Coronavirus: testing by laboratory

Data through Jul 4, 2020 verified as of Jul 5, 2020 at 09:25 AM

Data in this report are provisional and subject to change.

The numbers in the table below represent the number for whom test results were received by the Department of Health. A person can be tested by more than one laboratory and can have both positive and negative results. **Therefore, the sum of the numbers in each column will be larger than the total number of people tested.**

Reporting lab	Inconclusive	Negative	Positive	Percent positive	Total
REGIONAL MEDCIAL CENTER BAYONET POINT	1	1,403	81	5%	1,485
NORTHSIDE HOSPITAL AND HEART INSTITUTE		1,230	241	16%	1,471
FLORIDA HOSPITAL OF CARROLLWOOD		1,345	113	8%	1,458
DR. P. PHILLIPS HOSPITAL		1,441	8	1%	1,449
OCALA REGIONAL MEDICAL CENTER		1,375	66	5%	1,441
LAKE CITY MEDICAL CENTER		1,122	296	21%	1,418
WEST FLORIDA HOSPITAL LAB		1,273	140	10%	1,413
ST PETERSBURG GENERAL HOSPITAL		1,043	345	25%	1,388
BAPTIST MEDICAL CENTER - BEACHES		1,324	38	3%	1,362
SOUTH LAKE HOSPITAL CLINICAL LAB		1,327	14	1%	1,341
PLANTATION GENERAL HOSPITAL		1,091	225	17%	1,316
LEESBURG REGIONAL MEDICAL CENTER		1,178	98	8%	1,276
MEMORIAL HOSPITAL PEMBROKE	2	1,129	143	11%	1,274
HIALEAH HOSPITAL	3	910	310	25%	1,223
SOUTH FLORIDA BAPTIST HOSPITAL MICRO		1,097	123	10%	1,220
CENTRAL FLORIDA REGIONAL HOSPITAL		1,090	117	10%	1,207
CLINICORE LABS		1,112	88	7%	1,200
ST VINCENT'S MEDICAL CENTER - SOUTHSIDE		1,165	20	2%	1,185
FLORIDA HOSPITAL NORTH PINELLAS	5	1,115	51	4%	1,171
BAPTIST MEDICAL CENTER - NASSAU		1,146	24	2%	1,170
GULF COAST MEDICAL CENTER LAB		1,068	96	8%	1,164
UNIVERSITY OF MIAMI HOSPITAL	5	767	379	33%	1,151
WEST PALM HOSPITAL LAB		1,014	131	11%	1,145
PHYSICIANS REGIONAL MEDICAL CENTER - PINE RIDGE RD		941	176	16%	1,117
VISTA CLINICAL		740	376	34%	1,116
CLEVELAND CLINIC TRADITION HOSPITAL		961	136	12%	1,097
CITRUS MEMORIAL HOSPITAL LABORATORY		1,064	19	2%	1,083
BAYFRONT MEDICAL CENTER		813	232	22%	1,045
SOUTH SEMINOLE HOSPITAL LABORATORY		1,007	16	2%	1,023
MILLENNIUM PHYSICIAN GROUP		821	171	17%	992
LMHS		901	75	8%	976
QUEST DIAGNOSTICS - IRVING	6	783	187	19%	976
UNIVERSITY HOSPITAL AND MEDICAL CENTER		801	158	16%	959
DOCTORS HOSPITAL OF SARASOTA CLINICAL LABORATORY		890	60	6%	950
FORT WALTON BEACH MEDICAL CENTER		825	94	10%	919
PHYSICIANS REGIONAL MEDICAL CENTER - COLLIER BLVD	1	745	154	17%	900
ORLANDO VA MEDICAL CENTER		836	61	7%	897
BETHESDA HOSPITAL WEST		835	59	7%	894
MEASE DUNEDIN HOSPITAL		844	43	5%	887
NCH NORTHEAST		708	141	17%	849
LOWER KEYS MEDICAL CENTER		815	32	4%	847
MEMORIAL HOSPITAL MICRO		787	57	7%	844
VIKOR SCIENTIFIC	2	599	240	29%	841
QUEST DIAGNOSTICS - MIRAMAR	6	274	554	66%	834
BAPTIST NORTH EMERGENCY CENTER		679	149	18%	828
BAPTIST EMERGENCY CENTER OAKLEAF		672	152	18%	824
APPLIED INGENUITY DIAGNOSTICS LLC		785	18	2%	803

Coronavirus: testing by laboratory

Data through Jul 4, 2020 verified as of Jul 5, 2020 at 09:25 AM

Data in this report are provisional and subject to change.

The numbers in the table below represent the number for whom test results were received by the Department of Health. A person can be tested by more than one laboratory and can have both positive and negative results. **Therefore, the sum of the numbers in each column will be larger than the total number of people tested.**

Reporting lab	Inconclusive	Negative	Positive	Percent positive	Total
BAPTIST HEALTH EMERGENCY CENTER COUNTRY WALK		677	124	15%	801
SOUTH BAY HOSPITAL MICRO		680	84	11%	764
FLORIDA HOSPITAL FISH MEMORIAL		672	75	10%	747
FLORIDA HOSPITAL ORLANDO		745	1	0%	746
THE VILLAGES REGIONAL HOSPITAL		694	33	5%	727
ADVENTHEALTH OCALA LABORATORY		684	27	4%	711
BARTOW REGIONAL MEDICAL CENTER		628	82	12%	710
BMCT Molecular Diagnostics Subsection		559	143	20%	702
PALMS OF PASADENA HOSPITAL		615	66	10%	681
QUEST DIAGNOSTICS INFECTIOUS DISEASE INC		269	379	58%	648
TWIN CITIES HOSPITAL		597	25	4%	622
PUTNAM COMMUNITY MEDICAL CENTER		584	35	6%	619
VISTA CLINICAL DIAGNOSTICS		352	245	41%	597
CAPSTONE HEALTHCARE		403	187	32%	590
AVENTUS BIOLABS	1	378	211	36%	590
SYNERGY LABORATORIES	1	559	26	4%	586
MEDCOMP SCIENCES LLC	14	384	186	32%	584
LAKESIDE MEDICAL CENTER		367	216	37%	583
GULF BREEZE HOSPITAL LAB	1	510	40	7%	551
QUEST NEW ENGLAND	3	514	31	6%	548
ORLANDO HEALTH		10	507	98%	517
RAULERSON HOSPITAL		453	63	12%	516
EGLIN AIRFORCE BASE LAB		477	38	7%	515
ENGLEWOOD COMMUNITY HOSPITAL		481	18	4%	499
MARTIN MEMORIAL HEALTH SYSTEMS LABORATORY		447	40	8%	487
QUEST DIAGNOSTICS - WEST HILLS		452	19	4%	471
MAKO MEDICAL LABORATORIES	8	201	254	55%	463
ARUP		433	12	3%	445
NCH HEALTHCARE BONITA		371	69	16%	440
SACRED HEART-EMERALD COAST		357	59	14%	416
PATIENTS CHOICE LABORATORIES		174	211	55%	385
LEE MEMORIAL HOSPITAL LAB			380	100%	380
VAMC ORLANDO		296	83	22%	379
QUEST	1	82	296	78%	379
QUEST DIAGNOSTICS NICHOLS INSTITUTE	5	349	15	4%	369
ACCESS MEDICAL LABORATORIES		94	263	74%	357
ACCESSDX	2	184	165	47%	351
LAB24 INC			348	100%	348
QUEST DIAGNOSTICS - ATLANTA		291	40	12%	331
AMERICAN HEALTH ASSOCIATES	4	91	236	71%	331
BAPTIST EMERGENCY CENTER CLAY		308	21	6%	329
BROWARD HEALTH		320			320
MARINERS HOSPITAL		285	31	10%	316
AVERO DIAGNOSTICS - IRVING		286	27	9%	313
QUEST DIAGNOSTICS WOOD DALE		289	22	7%	311
DAVITA LABS		282	26	8%	308
APPLIED INGENUITY DIAGNOSTICS		272	25	8%	297

Coronavirus: testing by laboratory

Data through Jul 4, 2020 verified as of Jul 5, 2020 at 09:25 AM

Data in this report are provisional and subject to change.

The numbers in the table below represent the number for whom test results were received by the Department of Health. A person can be tested by more than one laboratory and can have both positive and negative results. **Therefore, the sum of the numbers in each column will be larger than the total number of people tested.**

Reporting lab	Inconclusive	Negative	Positive	Percent positive	Total
CLARITY LABS		239	48	17%	287
SOUTHEAST ALABAMA MEDICAL CENT		273	12	4%	285
PANCARE OF FLORIDA, INC			283	100%	283
JACKSON HOSPITAL LAB		249	22	8%	271
LABCORP RTP	1	38	231	86%	270
QUEST DIAGNOSTICS LENEXA	1	246	19	7%	266
HEALTHQUEST ESOTERICS		63	190	75%	253
DYNIX DIAGNOSTICS		184	68	27%	252
ECCOLAB GROUP		72	172	70%	244
NCH HEALTHCARE SYSTEM MICROBIOLOGY LAB			237	100%	237
PATIENTS FIRST - MAHAN DRIVE		139	98	41%	237
BARDMOOR LABORATORY		207	26	11%	233
TAMPA COMMUNITY HOSPITAL		161	70	30%	231
MEMORIAL PEMBROKE 24/7 CARE CENTER		187	41	18%	228
MAKO GENOMICS		217	8	4%	225
PHYSICIANS STAT LAB		132	87	40%	219
NEW YORK STATE ELR - LENCO MEDICAL LABORATORY		197	11	5%	208
PWN HEALTH		72	127	64%	199
BIOREFERENCE LABORATORIES		16	183	92%	199
CORE DIAGNOSTIC LABORATORIES LLC		173	23	12%	196
GENESIS REFERENCE LABORATORIES		1	195	99%	196
CLEVELAND CLINIC		187	6	3%	193
FLORIDA_HOSPITAL (DON'T USE)			189	100%	189
MEDSCAN LABORATORY INC		136	52	28%	188
UAB HIGHLANDS LABORATORY		187			187
JACKSON HOSPITAL CLINICAL LABORATORY		171	13	7%	184
LUMINUS DIAGNOSTICS		139	38	21%	177
THERADOC		143	26	15%	169
NCF DIAGNOSTICS & DNA TECHNOLOGIES	8	14	141	87%	163
FLO-MEDILAB SERVICES		54	103	66%	157
ST CLOUD REGIONAL MEDICAL CENTER		125	30	19%	155
MILLENNIUM PATHOLOGY			153	100%	153
HENDRY REGIONAL MEDICAL CENTER		2	151	99%	153
LABCORP		18	133	88%	151
LAB CORP		53	96	64%	149
NEW YORK STATE ELR - DEPARTMENT OF CLINICAL LABS		145	4	3%	149
GENESIS MEDICAL LABORATORY MIAMI FL.		78	68	47%	146
ASSOCIATED CLINICAL LABORATORIES		115	30	21%	145
ACUTIS DIAGNOSTICS		140	4	3%	144
MEMPHIS PATHOLOGY LABORATORY		131	4	3%	135
ORLANDO VAMC		79	56	41%	135
TENNESSEE DOH - NASHVILLE	1	118	13	10%	132
BAPTIST MD ANDERSON CANCER CENTER		131			131
NEW YORK STATE ELR - NORTH SHORE LONG ISLAND JEWISH HEALTH		116	13	10%	129
INFORM DIAGNOSTICS		127	1	1%	128
SANFORD REFERENCE LAB		123			123
BMHSI-AEL MICROBIOLOGY LABORATORY	2	102	18	15%	122

Coronavirus: testing by laboratory

Data through Jul 4, 2020 verified as of Jul 5, 2020 at 09:25 AM

Data in this report are provisional and subject to change.

The numbers in the table below represent the number for whom test results were received by the Department of Health. A person can be tested by more than one laboratory and can have both positive and negative results. **Therefore, the sum of the numbers in each column will be larger than the total number of people tested.**

Reporting lab	Inconclusive	Negative	Positive	Percent positive	Total
PATHGROUP LABS LLC		85	36	30%	121
CAREMOUNT MEDICAL - PATHOLOGY		111	3	3%	114
LABCORP TAMPA	1	15	97	86%	113
PATIENT'S FIRST		1	111	99%	112
ALLIED HEALTH FORT PIERCE		112			112
PATHNOSTICS		21	89	81%	110
QUALITOX LABORATORIES		93	17	15%	110
INTEGRATED REGIONAL LABORATORIES		99	10	9%	109
ASAP LAB LLC		90	17	16%	107
NEW YORK STATE ELR - NYU HOSPITALS CENTER CLINICAL LABORATORIES		103	4	4%	107
UAB UNIVERSITY OF ALABAMA HOSPITAL LAB		103	3	3%	106
LEHIGH REGIONAL MEDICAL CENTER LAB		93	12	11%	105
ORLANDO VETERANS AFFAIRS MEDICAL CENTER		32	68	68%	100
LABTECH DIAGNOSTIC		83	16	16%	99
NEW YORK STATE ELR - EMPIRECITY LABORATORIES		90	4	4%	94
NEO GENOMICS - FORT MYERS		93	1	1%	94
UHEALTH CORAL GABLES/LENNAR MED CTR		87	7	7%	94
DIAGNOSTIC SOLUTIONS		3	90	97%	93
PALM BEACH COUNTY HEALTH DEPT LAB		91	1	1%	92
FLAGLER HOSPITAL	3	15	74	80%	92
IRL MARKET LAB		60	31	34%	91
SMA SPECIALITY MEDICAL LAB		43	47	52%	90
UNKNOWN		7	83	92%	90
ASCEND CLINICAL		85	3	3%	88
JAY HOSPITAL CLINICAL LABORATORY		81	7	8%	88
ROSEN MEDICAL CENTER		83	4	5%	87
BOSTON HEART DIAGNOSTICS CORP		81	3	4%	84
SUNRISE MEDICAL LABORATORIES		58	26	31%	84
BUREAU OF CLINICAL LABORATORIES		70	14	17%	84
RCA LABORATORY SERVICES, LLC		50	33	40%	83
HOLY CROSS HOSPITAL LABORATORY			82	100%	82
JAMES A. HALEY VETERANS MICRO LAB			82	100%	82
VAMC WEST PALM LAB			81	100%	81
NEW YORK STATE ELR - NEW YORK PRESBYTERIAN HOSPITAL CUMC CLINICAL		70	11	14%	81
BAY PINES VAMC CLINICAL LABORATORY		1	79	99%	80
SPARROW HEALTHCARE		1	78	99%	79
GENETWORKX		15	64	81%	79
BIOCERNA LLC	2	58	15	20%	75
MICROGEN DX		1	73	99%	74
MILLENNIUM PATHOLOGY/MICROBIOLOGY LABORATORY			72	100%	72
FLORIDA HOSPITAL WAUCHULA		38	34	47%	72
USAFSAM/PHE		23	47	67%	70
VETERANS AFFAIRS MEDICAL CENTER LAB			69	100%	69
Highlands Regional Hospital		63	5	7%	68
STEWART REFERENCE LABORATORY			68	100%	68
CENTRAL FLORIDA HEALTH CARE		46	21	31%	67
ADVENT HEALTH DAYTONA		1	62	98%	63

Coronavirus: testing by laboratory

Data through Jul 4, 2020 verified as of Jul 5, 2020 at 09:25 AM

Data in this report are provisional and subject to change.

The numbers in the table below represent the number for whom test results were received by the Department of Health. A person can be tested by more than one laboratory and can have both positive and negative results. **Therefore, the sum of the numbers in each column will be larger than the total number of people tested.**

Reporting lab	Inconclusive	Negative	Positive	Percent positive	Total
DAVITA LABORATORY SERVICES		48	14	23%	62
AVECINA MEDICAL OAKLEAF			61	100%	61
NEW YORK STATE ELR - NEW YORK HOSPITAL LABORATORIES		56	4	7%	60
FLORIDA COMMUNITY HEALTH CENTERS INC			59	100%	59
MARTIN MEMORIAL LABORATORY AT ST LUCIE WEST		54	4	7%	58
ADVANCE MEDICAL OF NAPLES			57	100%	57
NEW YORK STATE ELR - MOUNT SINAI LABORATORY		52	5	9%	57
HOLY CROSS HOSPITAL		1	55	98%	56
MEDICAL DIAGNOSTICS LABORATORIES,INC		15	40	73%	55
P4 CLINICAL, LLC			54	100%	54
GESSLER CLINIC			53	100%	53
HOLMES REGIONAL MEDICAL CENTER		3	49	94%	52
ST JUDE CHILDREN'S RESEARCH HOSPITAL		49	3	6%	52
VAMC LAKE CITY		51	1	2%	52
FLORIDA HOSPITAL HEARTLAND MED CTR LAKE PLACID		42	9	18%	51
BROWARD HEALTH MEDICAL CENTER		1	49	98%	50
P4 DIAGNOSTIX LABORATORY NETWORK		1	48	98%	49
GENE BY GENE			49	100%	49
SARASOTA CO. HEALTH DEPT # 58		37	11	23%	48
MARTIN MEMORIAL MEDICAL CENTER LAB		10	38	79%	48
EXPRESS GENE MOLECULAR DIAGNOSTIC LABORATORY			47	100%	47
CENTRA CARE			47	100%	47
VAMC BAY PINES		1	46	98%	47
H LEE MOFFITT CANCER CENTER MICRO		46			46
BIOREFERENCE LABORATORY		1	44	98%	45
FULGENT DIAGNOSTICS	3	36	6	13%	45
AVERO DIAGNOSTICS		39	5	11%	44
UR MEDICINE LABS- CENTRAL LABORATORY		42			42
HURLBURT FIELD CLINIC		23	18	44%	41
BAPTIST HEALTH SOUTH FLORIDA		3	37	93%	40
BAYCARE LAB		1	39	98%	40
MILLENNIUM LAB SERVICES			40	100%	40
FISHERMENS HOSPITAL CLINICAL LAB		37	1	3%	38
LABCORP BURLINGTON (LPP)		9	29	76%	38
NAVY HOSPITAL			38	100%	38
UNITED CLINICAL LABORATORY LLC			38	100%	38
FINLAY CLINICAL LABORATORY		24	14	37%	38
QUEST TAMPA (NEW YORK ELR)		29	7	19%	36
ORLANDO VA PALMS		2	34	94%	36
Assurance Scientific Laboratories		26	9	26%	35
NEW YORK STATE ELR - WADSWORTH HEALTH CENTER		32	3	9%	35
ST. CLOUD MEDICAL GROUP		35			35
IRL		4	31	89%	35
FLORIDA HOSPITAL NEW SMYRNA		4	30	88%	34
FLORIDA LABORATORY ANALYSIS		26	8	24%	34
MILLENIUM PHYSICIANS GROUP			34	100%	34
VHA PUBLIC HEALTH REFERENCE LABORATORY- PALO ALTO		27	7	21%	34

Coronavirus: testing by laboratory

Data through Jul 4, 2020 verified as of Jul 5, 2020 at 09:25 AM

Data in this report are provisional and subject to change.

The numbers in the table below represent the number for whom test results were received by the Department of Health. A person can be tested by more than one laboratory and can have both positive and negative results. **Therefore, the sum of the numbers in each column will be larger than the total number of people tested.**

Reporting lab	Inconclusive	Negative	Positive	Percent positive	Total
NIGHT LITE PEDIATRICS		10	23	70%	33
BioReference Laboratories, Inc		21	10	32%	31
QUEST DIAGNOSTICS-VERO BEACH-37TH ST		31			31
SACRED HEART HOSPITAL ON THE GULF		24	7	23%	31
PROVIDENCE HOSPITAL LABORATORY		30	1	3%	31
CLINICAL REFERENCE LABORATORY		27	4	13%	31
MORTON PLANT HOSPITAL			31	100%	31
CENTRACARE		1	29	97%	30
MEDARBOR DIAGNOSTICS		1	28	97%	29
EAST MANATEE FAMILY	1		28	97%	29
STATEN ISLAND UNIVERSITY HOSPITAL-POUCH		27	2	7%	29
NORTH FLORIDA PEDIATRICS-TALLAHASSEE		25	4	14%	29
LAB CORP TAMPA			28	100%	28
DESOTO MEMORIAL HOSPITAL LAB			28	100%	28
SMA MEDICAL LABORATORY		8	20	71%	28
NEW YORK STATE ELR - ENZO CLINICAL LABS INC		27	1	4%	28
C.W. BILL YOUNG VA MEDICAL CENTER		3	25	89%	28
FINLAY CLINICAL LABORATORY INC		26	1	4%	27
HOSPITAL FOR SPECIAL SURGERY		26	1	4%	27
TRADITION MEDICAL CENTER LABORATORY		7	20	74%	27
SOUTH LAKE HOSPITAL		1	26	96%	27
CDC		17	9	35%	26
MORTON PLANT HOSPITAL/LAB		1	25	96%	26
SUNCOAST LABS			25	100%	25
P4CLINICAL	3	1	21	84%	25
TAMPA GENERAL HOSPITAL CLINICAL LAB			25	100%	25
SOLARIS DIAGNOSTICS		1	24	96%	25
HEALTH FIRST-HOLMES REGIONAL			24	100%	24
QUEST DIAGNOSTIC INC		2	22	92%	24
LABORATORY DYNAMICS		20	3	13%	23
LABORATORY CORP OF AMERICA	1	4	18	78%	23
ORLANDO REGIONAL MEDICAL CENTER		1	22	96%	23
DYNAMIC MEDICAL USA			23	100%	23
LAB CORP RTP	1	2	19	86%	22
MAVERICK LABS			22	100%	22
UNIVERSITY OF MIAMI HOSPITAL & CLINICS		19	3	14%	22
ST JOSEPHS CHILDRENS OUTREACH			22	100%	22
ST. ANTHONY'S HOSPITAL			22	100%	22
CAPITAL REGIONAL MEDICAL CENTER		1	21	95%	22
ALL CHILDREN'S HOSPITAL LAB		1	21	95%	22
PENNSYLVANIA DEPT OF HEALTH		19	3	14%	22
UNKNOWN - BAD FACILITY CODE		2	20	91%	22
HUNTSVILLE HOSPITAL LABORATORY		18	3	14%	21
LABFIRST - DEPARTMENT OF PATHOLOGY		21			21
JACKSON MEMORIAL HOSPITAL			21	100%	21
INTEGRITY LABORATORIES			20	100%	20
ST VINCENT'S BIRMINGHAM LABORATORY		20			20

Coronavirus: testing by laboratory

Data through Jul 4, 2020 verified as of Jul 5, 2020 at 09:25 AM

Data in this report are provisional and subject to change.

The numbers in the table below represent the number for whom test results were received by the Department of Health. A person can be tested by more than one laboratory and can have both positive and negative results. **Therefore, the sum of the numbers in each column will be larger than the total number of people tested.**

Reporting lab	Inconclusive	Negative	Positive	Percent positive	Total
FLORIDA CLINICAL LABORATORY-BIOREFERENCE LABORATORIES		2	18	90%	20
BROWARD HEALTH CORAL SPRINGS EPIDEMIOLOGY DEPT			20	100%	20
ST. CLOUD HOSPITAL		20			20
LEON MEDICAL CENTER			20	100%	20
QUEST DIAGNOSTICS NICHOLS INSTITUTE- LPP		3	17	85%	20
BAYCARE HEALTH SYSTEM		1	19	95%	20
ST. MARY'S MEDICAL CENTER LAB			19	100%	19
MIAMI BEACH COMMUNITY HEALTH CENTER			19	100%	19
EGLIN REGIONAL MEDICAL CENTER		4	15	79%	19
NEW YORK STATE ELR - NEWYORK-PRESBYTERIAN/QUEENS DIAGNOSTIC		19			19
INTEGRATED REGIONAL LABORATORIES - LARGO			19	100%	19
SUNPATH MEDICAL DIAGNOSTICS LABORATORY			18	100%	18
NONA SCIENTIFIC			18	100%	18
QUEST DIAGNOSTICS INC.			18	100%	18
MED HEALTH SERVICES		18			18
STONE WASH CLINICAL LABORATORIES		2	16	89%	18
NEW YORK STATE ELR - MONTEFIORE MEDICAL CENTER LABORATORIES - MOSES		12	5	29%	17
CLEVELAND CLINIC FOUNDATION		9	8	47%	17
MACDILL AIRFORCE BASE MICRO		14	3	18%	17
FAWCETT MEMORIAL HOSPITAL-LAB		1	16	94%	17
WATSON CLINIC LLP SOUTH			17	100%	17
KENDALL REGIONAL MEDICAL CENTER LAB			17	100%	17
POPLAR HEALTHCARE PLLC	1	10	5	31%	16
VA		15	1	6%	16
CHILDREN'S HOSPITAL OF ALABAMA		16			16
TOM LEE COMMUNITY HEALTH CENTER			16	100%	16
MIAMI VA HEALTHCARE SYSTEM			16	100%	16
QUESTDIAGNOSTICS INCORPORATED		1	14	93%	15
TGH		1	14	93%	15
DIATHERIX		13	2	13%	15
NEW PLANT CITY FAMILY CARE			15	100%	15
DEPARTMENT OF VETERANS AFFAIRS JAMES A. HALEY VETERANS HOSPITAL			15	100%	15
MOBILE INFIRMARY MED CENTER PATH LAB		13	2	13%	15
PALO ALTO VA MEDICAL CENTER		1	14	93%	15
LABORATORY SPECIALISTS OF MICHIGAN			14	100%	14
PHYSICIANS REGIONAL HEALTHCARE SYSTEM			14	100%	14
UNITED CLINICAL LABS			14	100%	14
IPSUM DIAGNOSTICS			14	100%	14
PACIFIC ANALYTICS			14	100%	14
PATRICK AIR FORCE BASE		1	13	93%	14
NITE LITE PEDIATRICS			14	100%	14
HEALTH CENTRAL HOSPITAL			13	100%	13
XERA MED RESEARCH			13	100%	13
GENPATH			13	100%	13
GRAVITY DIAGNOSTICS		9	4	31%	13
NEW YORK STATE ELR - STONY BROOK UNIVERSITY MEDICAL CENTER		10	3	23%	13
TIDE LABORATORIES		3	10	77%	13

Coronavirus: testing by laboratory

Data through Jul 4, 2020 verified as of Jul 5, 2020 at 09:25 AM

Data in this report are provisional and subject to change.

The numbers in the table below represent the number for whom test results were received by the Department of Health. A person can be tested by more than one laboratory and can have both positive and negative results. **Therefore, the sum of the numbers in each column will be larger than the total number of people tested.**

Reporting lab	Inconclusive	Negative	Positive	Percent positive	Total
QDX PATHOLOGY SERVICES		10	3	23%	13
QUEST DIAGNOSTICS INCORPORATED			13	100%	13
LABCORP BIRMINGHAM		4	9	69%	13
ADVENT HEALTH FISH MEMORIAL		2	11	85%	13
ARTHREX MEDICAL CENTER			13	100%	13
QUEST DIAGNOSTICS NICHOLS INSTITUTE - SJC (LPP)		9	4	31%	13
AMELIA URGENT CARE			13	100%	13
FLORIDA DEPARTMENT OF HEALTH		9	4	31%	13
VA MEDICAL CENTER		5	8	62%	13
MEDICAL DIAGNOSTIC LAB		1	11	92%	12
NEW YORK STATE ELR - KALEIDA HEALTH CENTER FOR LABORATORY		9	3	25%	12
ADVANCED URGENT CARE		10	2	17%	12
CORE DIAGNOSTIC LABORATORIES			12	100%	12
BROWARD DIALYSIS			12	100%	12
WHITE WILSON MEDICAL CENTER CLINIC			12	100%	12
BIO-REFERENCE LABORATORIES			12	100%	12
ST. JOSEPHS HOSPITAL			12	100%	12
PARRISH MEDICAL CENTER		1	11	92%	12
Quest Diag Unspecifd		4	8	67%	12
MEDCOMP SCIENCES			12	100%	12
NEW YORK STATE ELR - WHITE PLAINS HOSPITAL CENTER LAB		12			12
NEW YORK STATE ELR - BROOKDALE UNIVERSITY HOSPITAL		12			12
PROTEUS MOLECULAR AND CLINICAL LAB		8	4	33%	12
NXGEN MDX		11	1	8%	12
NAVAL HOSPITAL - JACKSONVILLE		1	11	92%	12
INDIAN RIVER MEDICAL CENTER		11			11
FLORIDA DEPT OF HEALTH		4	7	64%	11
BAY MEDICAL CENTER SACRED HEART HEALTH SYSTEM			11	100%	11
OUT OF STATE		11			11
AMERICAN ESOTERIC LABORATORIES			11	100%	11
LAB INTERMARKET FACILITY LAB			11	100%	11
AVECINA MEDICAL SOUTHSIDE			11	100%	11
NEW YORK STATE ELR - LENOX HILL HOSPITAL		10	1	9%	11
PARKWEST MEDICAL CENTER		9	1	10%	10
UNIVERSITY HEALTH SYSTEM INC		10			10
NEW JERSEY DEPARTMENT OF HEALTH COMMUNICABLE DISEASE SERVICE		3	7	70%	10
ESCAMBIA COMMUNITY CLINIC			10	100%	10
MED ARBOR			10	100%	10
AVECINA MEDICAL JULINGTON			10	100%	10
BROWARD HEALTH CARE			10	100%	10
DOH			10	100%	10
LAKE BALDWIN CBOC		9	1	10%	10
PARK WEST MEDICAL CENTER		10			10
MADISON CORE LABORATORIES		9	1	10%	10
SUNQUEST		2	8	80%	10
NEW YORK STATE ELR - CATHOLIC HEALTH SYSTEM DEPT LABORATORY		10			10
ST FRANCIS HOSPITAL		6	3	33%	9

Coronavirus: testing by laboratory

Data through Jul 4, 2020 verified as of Jul 5, 2020 at 09:25 AM

Data in this report are provisional and subject to change.

The numbers in the table below represent the number for whom test results were received by the Department of Health. A person can be tested by more than one laboratory and can have both positive and negative results. **Therefore, the sum of the numbers in each column will be larger than the total number of people tested.**

Reporting lab	Inconclusive	Negative	Positive	Percent positive	Total
VAMC GAINESVILLE		2	7	78%	9
CORE LABORATORY		1	8	89%	9
LABCORP - MIAMI		4	5	56%	9
CLARITY LAB SOLUTIONS		3	6	67%	9
DOCTORS MEMORIAL HOSPITAL		6	3	33%	9
SHORELINE PHYSICIAN GROUP			9	100%	9
ST. JOSEPH HOSPITAL LAB			9	100%	9
UVMMC MICROBIOLOGY		9			9
JACKSON HEALTH SYSTEM			9	100%	9
CITRUS MEMORIAL HEALTH SYSTEM LAB		1	8	89%	9
ALL CHILDREN'S HOSPITAL/LAB			9	100%	9
NEW YORK STATE ELR - WILSON MEMORIAL REGIONAL MEDICAL CENTER		9			9
CAPE CANAVERAL HOSPITAL			9	100%	9
NEW YORK STATE ELR - QUEST DIAGNOSTICS INCORPORATED		6	3	33%	9
MICHIGAN DEPARTMENT OF HEALTH AND HUMAN SERVICES			9	100%	9
ST MARY'S MEDICAL CENTER		1	7	88%	8
LAB PLUS, LLC AT SAINT THOMAS WEST HOSPITAL		6	2	25%	8
JACKSON NORTH MEDICAL CENTER		1	7	88%	8
THE COMMONWEALTH OF MASSACHUSETTS			8	100%	8
MOFFITT CANCER CENTER		6	2	25%	8
AMERICAN PATHOLOGY PARTNERS		7	1	13%	8
BAYCARE OUTREACH LABORATORY SERVICES		1	7	88%	8
BAYFRONT		8			8
DELRAY MEDICAL CENTER LAB			8	100%	8
EXPERTUS LABORATORIES INC		8			8
ST JOSEPH'S HEALTHLINE		1	7	88%	8
CONSOLIDATED LAB SERVICES		8			8
VENICE REGIONAL MEDICAL CENTER			8	100%	8
MIAMI VAMC			8	100%	8
FLORIDA COMMUNITY HEALTH CENTER OF ST. LUCIE			8	100%	8
GENEUS DIAGNOSTICS			8	100%	8
SEVEN RIVERS REGIONAL MEDICAL CENTER			8	100%	8
ST JOSEPHS HOSPITAL			8	100%	8
LABCORP - CLEARWATER		3	5	63%	8
NORTH CAROLINA DEPARTMENT OF HEALTH & HUMAN SERVICES			7	100%	7
NONE			7	100%	7
NEW YORK STATE ELR - ROCHESTER GENERAL HOSPITAL LABORATORY		6	1	14%	7
QUEST INFECTIOUS DISEASE		3	4	57%	7
MOLECULAR TESTING LABS			7	100%	7
WATSON CLINIC LLP MAIN			7	100%	7
DEVANSH LAB WERKS INC		5	2	29%	7
MAYO CLINIC DEPT OF LAB MED PATHOLOGY			7	100%	7
LONGLEAF DIAGNOSTIC LABORATORIES		2	5	71%	7
VIERA HOSPITAL			7	100%	7
USA HEALTH UNIVERSITY HOSPITAL CLINICAL LABORATORY		7			7
GRAVITY DIAGNOSTICS, LLC		3	4	57%	7
325TH MEDICAL GROUP			7	100%	7

Coronavirus: testing by laboratory

Data through Jul 4, 2020 verified as of Jul 5, 2020 at 09:25 AM

Data in this report are provisional and subject to change.

The numbers in the table below represent the number for whom test results were received by the Department of Health. A person can be tested by more than one laboratory and can have both positive and negative results. **Therefore, the sum of the numbers in each column will be larger than the total number of people tested.**

Reporting lab	Inconclusive	Negative	Positive	Percent positive	Total
NEW YORK STATE ELR - UNIVERSITY HOSPITAL, STONY BROOK SOUTHAMPTON		7			7
NO NAME		5	2	29%	7
PALM BAY HOSPITAL		1	6	86%	7
MACDILL AFB HOSPITAL		1	6	86%	7
BIO REFERENCE LABORATORIES		2	5	71%	7
AEL- MEMPHIS			7	100%	7
EAST ALABAMA MEDICAL CENTER LABORATORY		6	1	14%	7
LABCORP INC		1	6	86%	7
NEW YORK STATE ELR - JAMES J PETERS VA MEDICAL CENTER		4	2	33%	6
PERSONALIZED GENETIC TESTING			6	100%	6
DOCTOR'S IN HOUSE LAB			6	100%	6
FLORIDA DEPARTMENT OF HEALTH IN LAKE COUNTY		3	3	50%	6
DYNAMIC DNA LAB			6	100%	6
NORTH SHORE UNIVERSITY HOSPITAL LABORATORY		6			6
SOUTHEAST ALABAMA MEDICAL CENTER			6	100%	6
NEW YORK STATE ELR - JAMAICA HOSPITAL MEDICAL CENTER		6			6
ARCHBOLD MEMORIAL HOSPITAL/LAB		3	3	50%	6
DIAGNOSTIC LABORATORY OF OKLAHOMA		6			6
PRIDE DIAGNOSTICS		6			6
SACRED HEART HEALTH SYSTEM			6	100%	6
ADVENTHEALTH LAB			6	100%	6
ACCU REFERENCE MEDICAL LAB			6	100%	6
SANTA ROSA MEDICAL CENTER			6	100%	6
NORTH BAY HOSPITAL			6	100%	6
MICHIGAN DEPARTMENT OF COMMUNITY HEALTH		1	5	83%	6
BAPTIST SOUTH MEDICAL CENTER		2	4	67%	6
LECONTE MEDICAL CENTER LAB		5	1	17%	6
LEE COUNTY HEALTH DEPARTMENT		4	2	33%	6
STATE LAB		1	5	83%	6
ST JOSEPH HOSPITAL		5	1	17%	6
CHILDREN'S HOSPITAL OF PHILADELPHIA		5			5
NEW YORK STATE ELR - GOOD SAMARITAN HOSPITAL LABORATORY		5			5
ST VINCENT'S EAST LABORATORY		5			5
ST. JOSEPH'S HOSPITAL LAB			5	100%	5
JFK MEDICAL CENTER NORTH LAB			5	100%	5
BIOTECH			5	100%	5
SOUTH SEMINOLE HOSPITAL		1	4	80%	5
CURATIVE LABS INC			5	100%	5
CONNECTICUT DEPARTMENT OF HEALTH		4	1	20%	5
DEPARTMENT OF VETERANS AFFAIRS MEDICAL CENTER			5	100%	5
MILLENNIUM PHYSICIAN GROUP LCC			5	100%	5
LAB			5	100%	5
AEL KNOXVILLE			5	100%	5
MID-FLORIDA PATHOLOGY		3	2	40%	5
UPMC HEALTH SYSTEM		4	1	20%	5
CLINICAL PATHOLOGY LABORATORIES, INC.			5	100%	5
TAMIAMI LAB MILLENNIUM			5	100%	5

Coronavirus: testing by laboratory

Data through Jul 4, 2020 verified as of Jul 5, 2020 at 09:25 AM

Data in this report are provisional and subject to change.

The numbers in the table below represent the number for whom test results were received by the Department of Health. A person can be tested by more than one laboratory and can have both positive and negative results. **Therefore, the sum of the numbers in each column will be larger than the total number of people tested.**

Reporting lab	Inconclusive	Negative	Positive	Percent positive	Total
SMA LAB		3	2	40%	5
LEE MEMORIAL LAB GULF COAST			5	100%	5
TRUE HEALTH DIAGNOSTICS		1	4	80%	5
HEALTH FIRST-PALM BAY			5	100%	5
XRL SXF REF LAB		5			5
UPMC CHAUTAUQUA AT WCA LABORATORY		5			5
NORTHWELL HEALTH PLAINVIEW HOSPITAL LABORATORY		4	1	20%	5
PENSACOLA PEDIATRICS			5	100%	5
SANFORD LABORATORIES		5			5
BROWARD COUNTY HEALTH DEPT.			5	100%	5
BAPTIST CLAY			5	100%	5
PATHGROUP LABS			5	100%	5
PATHOGENIUS LABORATORIES		2	3	60%	5
BOCA RATON REGIONAL HOSPITAL LAB			5	100%	5
ST VINCENTS MEDICAL CENTER RIVERSIDE NURSING			5	100%	5
AMERICAN HEALTH ASSOCIATES OF TAMPA			5	100%	5
US BIOTEK LABORATORIES			5	100%	5
ST ANTHONY NORTH			5	100%	5
TENNESSEE DOH		4			4
CANTON-POTSDAM HOSPITAL LABORATORY		4			4
MEDICAL LABORATORY DIAGNOSTICS			4	100%	4
DAVITA LABORATORY		4			4
Diatherix Laboratories, LLC		1	3	75%	4
LAKELAND REGIONAL HEALTH			4	100%	4
HEALTH FIRST-VIERA HOSPITAL			4	100%	4
SEBASTIAN RIVER MEDICAL CENTER		3	1	25%	4
MEDLOGIC, LLC		4			4
LEHIGH VALLEY HOSPITAL		3	1	25%	4
SUNCOAST COMMUNITY HEALTH CENTERS PEDIATRICS			4	100%	4
QUEST DIAGNOSTICS- MELBOURNE			4	100%	4
PRECISION LABS LLC		1	3	75%	4
CAYUGA MEDICAL CENTER AT ITHACA		4			4
FLOWERS HOSPITAL		1	3	75%	4
LABCORP BURLINGTON CYTO		3	1	25%	4
MAYO CLINIC LABS - ROCHESTER SUPERIOR DRIVE			4	100%	4
DTR LABS		3	1	25%	4
OKLAHOMA STATE UNIVERSITY DIAGNOSTIC LAB			4	100%	4
BAY PINES VA		1	3	75%	4
PROMEDICA LABORATORIES		4			4
COMMUNITY HEALTH OF SOUTH FLORIDA			4	100%	4
ADVENTHEALTH CENTRA CARE ORMOND BEACH			4	100%	4
HEALTH FIRST CAPE CANAVERAL HOSPITAL			4	100%	4
MISSOURI DEPARTMENT OF HEALTH AND SENIOR SERVICES			4	100%	4
NEW YORK STATE ELR - VASSAR BROTHERS MEDICAL CENTER LABORATORY		4			4
NEW YORK STATE ELR - CATHOLIC HEALTH SERVICES REGIONAL LABORATORY		2	2	50%	4
AMERICAN RESEARCH LABS			4	100%	4
NORTHWEST FLORIDA COMMUNITY HOSPITAL		1	3	75%	4

Coronavirus: testing by laboratory

Data through Jul 4, 2020 verified as of Jul 5, 2020 at 09:25 AM

Data in this report are provisional and subject to change.

The numbers in the table below represent the number for whom test results were received by the Department of Health. A person can be tested by more than one laboratory and can have both positive and negative results. **Therefore, the sum of the numbers in each column will be larger than the total number of people tested.**

Reporting lab	Inconclusive	Negative	Positive	Percent positive	Total
LABCORP - NAPLES			4	100%	4
NEW YORK STATE ELR - HUDSON VALLEY HOSPITAL CENTER LABORATORY		3	1	25%	4
NEW YORK STATE ELR - LOURDES HOSPITAL INC		4			4
BOND CLINIC			4	100%	4
TRUGENX			4	100%	4
THE CENTER FOR URGENT CARE		3	1	25%	4
VAMC			4	100%	4
NEW YORK STATE ELR - ST PETER'S BENDER LABORATORY		4			4
FINLAY C. LABORATORY		3	1	25%	4
PEDIATRIC HEALTH CARE ALLIANCE			4	100%	4
EXPRESS TESTING-ONE			4	100%	4
UMHC/SYLVESTER AT KENDALL			4	100%	4
THOMAS JEFFERSON UNIVERSITY HOSPITAL		4			4
MERCY HOSPITAL MIAMI LAB			4	100%	4
NEW YORK STATE ELR - BROOKLYN HOSPITAL CENTER DOWNTOWN CAMPUS		4			4
VENICE REGIONAL MEDICAL LAB SERVICES			4	100%	4
SOUTHEAST FAMILY HEALTHCARE CENTER			4	100%	4
BROOKWOOD BAPTIST MEDICAL CENTER		3			3
GULF COAST MOLECULAR LABORATORIES			3	100%	3
BEAUMONT LABORATORY			3	100%	3
FRANCES WARDE MEDICAL LABORATORY		1	2	67%	3
ROCKLEDGE			3	100%	3
LAKE WALES MEDICAL CENTER INC			3	100%	3
KEY WEST URGENT CARE, INC		3			3
NORTH OKALOOSA MEDICAL CENTER			3	100%	3
JACKSON SOUTH COMMUNITY HOSPITAL LAB			3	100%	3
BAYCARE LABORATORIES			3	100%	3
Cleveland Clinic Laboratories		1	2	67%	3
NEW YORK STATE ELR - SOUTHSIDE HOSPITAL NORTHWELL HEALTH LABORATORY		2	1	33%	3
AVELLINO LAB USA INC		3			3
TYNDALL AFB			3	100%	3
WINTER HAVEN HOSPITAL			3	100%	3
ADVENT HEALTH CENTRA CARE: WATERFORD LAKES			3	100%	3
INDIAN RIVER CHD VERO BEACH		2	1	33%	3
VIRTUA VOORHEES HOSPITAL		3			3
BAYONET POINT MEDICAL CENTER			3	100%	3
VIRGINIA DIVISION OF CONSOLIDATED LABORATORIES			3	100%	3
SHELBY COUNTY HEALTH CARE CORPORATION		1	2	67%	3
BAYCARE OUTREACH LABORATORY HOSPITAL			3	100%	3
ASCENSION ST. VINCENT'S PRIMARY CARE			3	100%	3
BRANCH MEDICAL CLINIC			3	100%	3
WESTPAC LABS			3	100%	3
PRATTVILLE BAPTIST HOSPITAL		3			3
DOH-TAMPA BRANCH LABORATORY (MLK BLVD)			3	100%	3
GENUS DIAGNOSTICS			3	100%	3
HUNTINGTON HOSPITAL LABORATORY		2	1	33%	3
NICHOLS INSTITUTE QUEST DIAGNOSTICS		2	1	33%	3

Coronavirus: testing by laboratory

Data through Jul 4, 2020 verified as of Jul 5, 2020 at 09:25 AM

Data in this report are provisional and subject to change.

The numbers in the table below represent the number for whom test results were received by the Department of Health. A person can be tested by more than one laboratory and can have both positive and negative results. **Therefore, the sum of the numbers in each column will be larger than the total number of people tested.**

Reporting lab	Inconclusive	Negative	Positive	Percent positive	Total
ACH			3	100%	3
CBS LABORATORY			3	100%	3
CLEVELAND CLINIC MARTIN NORTH HOSPITAL			3	100%	3
ST LUKES HOSPITAL LABORATORY		2	1	33%	3
PUBLIC HEALTH LAB		3			3
OPTUM LABS LLC			3	100%	3
PENNSYLVANIA DEPARTMENT OF HEALTH BUREAU OF LABORATORIES			3	100%	3
LABCORP DIAGNOSTICS-MIAMI		2	1	33%	3
ILLINOIS DEPARTMENT OF PUBLIC HEALTH			3	100%	3
UNKNOWN LAB			3	100%	3
QUEST DIAGNOSTIC			3	100%	3
BAYFRONT HEALTH BROOKSVILLE			3	100%	3
WAKEMED		1	2	67%	3
VA OUTPATIENT			3	100%	3
JOE DIMAGGIO CHILDREN'S HOSPITAL		1	2	67%	3
NORTH BROWARD HOSPITAL DISTRICT HEALTHCARE FOR THE HOMELESS			3	100%	3
PINELLAS COUNTY HEALTH DEPARTMENT		2	1	33%	3
MAYO MEDICAL LABORATORIES		2	1	33%	3
CENTRAL FLORIDA HEALTH CARE INC			3	100%	3
BARONESS ERLANGER HOSPITAL		3			3
FLORIDA CLINICAL LAB			3	100%	3
NEW YORK STATE ELR - QUEST DIAGNOSTICS NICHOLS		3			3
LAKE CITY VETERANS HOSPITAL			3	100%	3
LEE MEMORIAL HEALTH PARK LAB			3	100%	3
LAB CORP OF AMERICA		1	2	67%	3
UT MEMPHIS UNIVERSITY HEALTH SERVICES		2	1	33%	3
DOH JACKSONVILLE CENTRAL LABORATORY		3			3
PALMS WEST HOSPITAL			3	100%	3
GENESIS DIAGNOSTICS			3	100%	3
FAMILY HEALTH CENTERS OF SWF LABS			3	100%	3
TAMPA GENERAL HOSPITAL LABORATORY			3	100%	3
COLORADO DEPARTMENT OF PUBLIC HEALTH AND ENVIRONMENT			3	100%	3
ACHS		2			2
NEW YORK STATE ELR - SARATOGA HOSPITAL LABORATORY		2			2
LABCORP - OHIO			2	100%	2
VIRTUA MEMORIAL HOSPITAL BURLINGTON COUNTY			2	100%	2
UNIVERSITY HOSPITAL			2	100%	2
WALGREENS #5317		2			2
MONTEFIORE NEW ROCHELLE HOSPITAL		2			2
MONTANA PUBLIC HEALTH LAB			2	100%	2
PALM BEACH PATHOLOGY		2			2
NAPHCARE, INC.			2	100%	2
PREMIER LABORATORY SERVICES, LLC			2	100%	2
TREASURE COAST COMMUNITY HEALTH			2	100%	2
GEISINGER MEDICAL CENTER		2			2
HOME ACCESS HEALTH			2	100%	2
ST. JOSEPH REGIONAL MEDICAL CENTER			2	100%	2

Coronavirus: testing by laboratory

Data through Jul 4, 2020 verified as of Jul 5, 2020 at 09:25 AM

Data in this report are provisional and subject to change.

The numbers in the table below represent the number for whom test results were received by the Department of Health. A person can be tested by more than one laboratory and can have both positive and negative results. **Therefore, the sum of the numbers in each column will be larger than the total number of people tested.**

Reporting lab	Inconclusive	Negative	Positive	Percent positive	Total
BAPTIST MEDICAL CENTER EAST		1	1	50%	2
NEW YORK STATE DEPARTMENT OF HEALTH		1	1	50%	2
NORTHERN DUTCHESS HOSPITAL LABORATORY		2			2
BAYFRONT HEALTH SPRING HILL			2	100%	2
NEW YORK STATE ELR - JACOBI MEDICAL CENTER		2			2
CONEMAUGH MEMORIAL MEDICAL CENTER		2			2
IOWA DEPARTMENT OF PUBLIC HEALTH			2	100%	2
SELECT REFERENCE LABORATORIES, LLC			2	100%	2
X-GENE MOLECULAR LABS			2	100%	2
INTERCOASTAL MEDICAL GROUP			2	100%	2
LABCORP RARITAN		2			2
HEALTHMARK REGIONAL HOSPITAL LAB			2	100%	2
STATEN ISLAND UNIVERSITY HOSPITAL		2			2
ST. MARYS MEDICAL CENTER			2	100%	2
EMERGENCY MEDICAL CENTER			2	100%	2
AHSE ROP		2			2
ALTRU DIAGNOSTICS INC			2	100%	2
AMERICAN FAMILY CARE- ORANGE BEACH			2	100%	2
ST ELIZABETH MEDICAL CENTER LABORATORY		2			2
CELERION			2	100%	2
LABCORP - STUART		1	1	50%	2
BETH ISRAEL DEACONESS MEDICAL CENTER			2	100%	2
BAYFRONT HEALTH ER PINELLAS PARK		2			2
MAGNOLIA DIAGNOSTIC			2	100%	2
MEMORIAL SLOAN KETTERING CANCER CENTER		1	1	50%	2
MONTEFIORE ST LUKE'S CORNWALL HOSPITAL		2			2
NEW HAMPSHIRE PUBLIC HEALTH LABORATORIES		2			2
NEW HAMPSHIRE DEPARTMENT OF HEALTH AND HUMAN SERVICES		1	1	50%	2
ABBOTT			2	100%	2
PRIVA PATH LABS			2	100%	2
NEW YORK STATE ELR - BRONX LEBANON HOSPITAL-MEDICAL CENTER		2			2
ST CATHERINE OF SIENA HOSPITAL		2			2
OMNI			2	100%	2
GEORGIA DEPARTMENT OF PUBLIC HEALTH			2	100%	2
SHELBY BAPTIST MEDICAL CENTER			2	100%	2
GULF COAST MEDICAL GROUP			2	100%	2
SCDHEC BUREAU OF LABORATORIES			2	100%	2
SARASOTA MEMORIAL MEDICAL URGENT CARE CENTER			2	100%	2
OKLAHOMA STATE DEPARTMENT OF HEALTH-PUBLIC HEALTH LABORATORY			2	100%	2
METHODIST MEDICAL CENTER		1	1	50%	2
FLORIDA CLINICAL LABORATORY INC			2	100%	2
CONNECTDX			2	100%	2
ADVANCED MEDICAL CARE			2	100%	2
ALABAMA DEPARTMENT OF PUBLIC HEALTH			2	100%	2
QUEENS HOSPITAL CENTER		2			2
BAY CARE			2	100%	2
NEW YORK STATE ELR - ORANGE REGIONAL MEDICAL CENTER LABORATORY		2			2

Coronavirus: testing by laboratory

Data through Jul 4, 2020 verified as of Jul 5, 2020 at 09:25 AM

Data in this report are provisional and subject to change.

The numbers in the table below represent the number for whom test results were received by the Department of Health. A person can be tested by more than one laboratory and can have both positive and negative results. **Therefore, the sum of the numbers in each column will be larger than the total number of people tested.**

Reporting lab	Inconclusive	Negative	Positive	Percent positive	Total
MY CLINICAL LAB			2	100%	2
Cleveland Clinic Weston			2	100%	2
QUEST DIAGNOSITCS INCORPORATED			2	100%	2
DEACONESS HOSPITAL			2	100%	2
BAYFRONT HEALTH PUNTA GORDA			2	100%	2
SSM HEALTH ST LOUIS MICROBIOLOGY LABORATORY		1	1	50%	2
JOHNSON CITY MEDICAL CENTER		1	1	50%	2
CALHOUN LIBERTY HOSPITAL			2	100%	2
THE VILLAGES CLINICAL LAB		2			2
BIOFIRE			2	100%	2
GALEN BAYLOR EXTENSION		2			2
DORAL URGENT CARE			2	100%	2
OHIO STATE UNIVERSITY WEXNER MEDICAL CENTER			2	100%	2
MHHS All Lab Subsection		2			2
FLORIDA DEPARTMENT OF HEALTH IN HILLSBOROUGH COUNTY			2	100%	2
CLINICAL PATHOLOGY LABS		1	1	50%	2
FULGENT GENETICS			2	100%	2
QUEST DIAGNOSTICS-N ST PETERSBURG-5TH			2	100%	2
LINCOLN MEDICAL AND MENTAL HEALTH CENTER		2			2
FCHC (OB)-DARWIN SQUARE CTR.			2	100%	2
IRL MARKET LAB ALACHUA		1	1	50%	2
LABCORP PHOENIX			2	100%	2
UNITED CLINICAL LABORATORIES			1	100%	1
TIEHH BIOTERRORISM RESPONSE LAB			1	100%	1
SUNY AT STONY BROOK			1	100%	1
WATAUGA MEDICAL CENTER			1	100%	1
URGENT CARE WEST CLINIC			1	100%	1
SKY RIDGE MEDICAL CENTER - MICRO			1	100%	1
TEXAS DEPARTMENT OF STATE HEALTH SERVICES			1	100%	1
SOUTHEAST GEORGIA HEALTH SYSTEM			1	100%	1
XPRESS WELLNESS URGENT CARE			1	100%	1
State Lab Unspecifd			1	100%	1
THE HEART HOSPITAL BAYLOR PLANO			1	100%	1
WELLNOW URGENT CARE		1			1
SAMARITAN MEDICAL CENTER		1			1
ST FRANCIS			1	100%	1
PECONIC BAY MEDICAL CENTER LABORATORY			1	100%	1
ROBERT WOOD JOHNSON HOSPITAL			1	100%	1
TALLAHASSEE MEMORIAL HOSPITAL/MICROBIOLOGY LAB			1	100%	1
REDITUS LABORATORIES			1	100%	1
UNIVERSITY OF MISSOURI HEALTH CARE			1	100%	1
UTMB PATHOLOGY CLINICAL SERVICES LABORATORY			1	100%	1
NORTH RIVER FAMILY HEALTH CENTER			1	100%	1
ST. MARY MEDICAL CENTER		1			1
SOUTH GEORGIA MEDICAL CENTER			1	100%	1
WOODHULL MEDICAL AND MENTAL HEALTH CTR		1			1
SOUTHWEST REGIONAL PCR LABORATORY			1	100%	1

Coronavirus: testing by laboratory

Data through Jul 4, 2020 verified as of Jul 5, 2020 at 09:25 AM

Data in this report are provisional and subject to change.

The numbers in the table below represent the number for whom test results were received by the Department of Health. A person can be tested by more than one laboratory and can have both positive and negative results. **Therefore, the sum of the numbers in each column will be larger than the total number of people tested.**

Reporting lab	Inconclusive	Negative	Positive	Percent positive	Total
TANNER MEDICAL CENTER EAST AL		1			1
PHAROS HEALTH			1	100%	1
UNIVERSITY HOSPITAL OF BROOKLYN		1			1
PERDIDO URGENT CARE			1	100%	1
UNITED HEALTHCARE			1	100%	1
OHIO DEPARTMENT OF HEALTH LABORATORY		1			1
TRINITAS REGIONAL MEDICAL CENTER			1	100%	1
QUEST - HOUSTON LAB			1	100%	1
PRISMA HEALTH TUOMEY LABORATORY			1	100%	1
NORTHSHORE UNIVERSITY HEALTHSYSTEM EVANSTON HOSPITAL LAB			1	100%	1
VRL EUROFINIS			1	100%	1
RIVERVIEW REGIONAL MEDICAL CENTER		1			1
PEDIATRIC HEALTHCARE ALLIANCE			1	100%	1
VIRACOR			1	100%	1
NOVANT HEALTH INPATIENT CARE			1	100%	1
QUEST ELR		1			1
RIVIERA BEACH HEALTH CENTER LAB			1	100%	1
RDX BIOSCIENCE,			1	100%	1
US LABORATORIES			1	100%	1
WASHINGTON STATE DEPARTMENT OF HEALTH PUBLIC HEALTH LABORATORIES			1	100%	1
MEMORIAL HERMANN CONSOLIDATED LABORATORY SERVICES			1	100%	1
MONTEFIORE NYACK HOSPITAL AFFILIATED LABORATORY		1			1
WARD MEMORIAL HOSPITAL		1			1
SHANDS AT LAKE SHORE LAB			1	100%	1
MUNSON MEDICAL CENTER			1	100%	1
WEST PACIFIC MEDICAL LABORATORY			1	100%	1
WELLINGTON WEST 100176			1	100%	1
NEWYORK-PRESBYTERIAN/ LAWRENCE HOSPITAL LABORATORY		1			1
SCIENCE CARE			1	100%	1
ARNOT OGDEN MEDICAL CENTER LABORATORY		1			1
BAYFRONT HEALTH PORT CHARLOTTE			1	100%	1
CALIFORNIA PUBLIC HEALTH LABORATORY			1	100%	1
ALLIANCE LABS @LRMC			1	100%	1
ALVERNO CLINICAL LABORATORIES			1	100%	1
ARNOLD PALMER HOSPITAL LABORATORY			1	100%	1
Covance Central Laboratory			1	100%	1
FLORIDA HOSPITAL ALTAMONTE			1	100%	1
FORT SANDERS REGIONAL LABORATORY		1			1
CELEBRATION HOSPITAL			1	100%	1
CENTRA CARE – WATERFORD LAKES			1	100%	1
CFCH - FROSTPROOF			1	100%	1
JOHNS HOPKINS MEDICAL LABORATORIES			1	100%	1
LABCORP - HOLLYWOOD			1	100%	1
LABCORP LAFAYETTE		1			1
FALMOUTH BY THE SEA			1	100%	1
INTERLAB		1			1
JOHN HOPKINS MEDICAL LABORATORIES		1			1

Coronavirus: testing by laboratory

Data through Jul 4, 2020 verified as of Jul 5, 2020 at 09:25 AM

Data in this report are provisional and subject to change.

The numbers in the table below represent the number for whom test results were received by the Department of Health. A person can be tested by more than one laboratory and can have both positive and negative results. **Therefore, the sum of the numbers in each column will be larger than the total number of people tested.**

Reporting lab	Inconclusive	Negative	Positive	Percent positive	Total
MISSOURI DEPARTMENT OF HEALTH AND SENIOR SERVICES - STATE PH LAB		1			1
NEW YORK PRESBYTERIAN - ALLEN HOSPITAL		1			1
NEW YORK STATE ELR - SAMARITAN HOSPITAL LABORATORY		1			1
LEGACY LABORATORY SERVICES			1	100%	1
MARINER'S HOSPITAL			1	100%	1
MARYLAND DEPARTMENT OF HEALTH AND MENTAL HYGIENE			1	100%	1
KETTERING MEDICAL CENTER			1	100%	1
MARSHALL MEDICAL CENTER SOUTH LAB		1			1
NEW YORK STATE ELR - WESTCHESTER MEDICAL CENTER		1			1
HEALTHLINK DIAGNOSTIC LABORATORIES			1	100%	1
INTERMARKET FACILITY			1	100%	1
JEFFERSON COUNTY HEALTH DEPARTMENT-MONTICELLO		1			1
PIEDMONT HOSPITAL LAB			1	100%	1
RIVERSIDE METHODIST HOSPITAL LAB			1	100%	1
SIGNATURE CARE PFLUGERVILLE			1	100%	1
NORTH FLORIDA/SOUTH GEORGA VETERANS HEALTH SYSTEM			1	100%	1
PEACHEALTH LABORATORIES		1			1
PHYSICIANS STAT			1	100%	1
LABCORP KANSAS CITY			1	100%	1
LAKEVIEW REGIONAL HOSPITAL			1	100%	1
MANATEE PEDIATRICS			1	100%	1
HOLY NAME MEDICAL CENTER		1			1
HOUSTON HEALTH DEPARTMENT - BUREAU OF LABORATORY SERVICES			1	100%	1
LABCORP - ORLANDO		1			1
CHATSWORTH ASSISTED LIVING COMMUNITY AT PGA NATIONAL			1	100%	1
DALLAS MEDICAL CENTER			1	100%	1
HANCOCK REGIONAL HOSPITAL		1			1
MEDICAL CLINIC OF HOUSTON			1	100%	1
MEDSTAR HARBOR HOSPITAL			1	100%	1
BIODORON LABORATORIES			1	100%	1
DUKE HEALTH REGIONAL HOSPITAL			1	100%	1
AZALEA HEALTH			1	100%	1
BAPTIST ER TOWN CTR			1	100%	1
CAROLINAS HEALTHCARE SYSTEM LAB			1	100%	1
KETTERING HEALTH			1	100%	1
LEESBURG REGIONAL MEDICAL CENTER		1			1
AMMON LABS			1	100%	1
EDGAR PRICE FAMILY & CHILDREN HEALTHCARE CENTER			1	100%	1
FLORIDA HEALTH CARE PLANS			1	100%	1
FLORIDA HOSPITAL KISSIMMEE			1	100%	1
CBC LAB			1	100%	1
COLLIER COUNTY HEALTH DEPT.			1	100%	1
DOCTOR'S MEMORIAL HOSPITAL			1	100%	1
COLORADO DEPARTMENT OF HEALTH LABORATORY SERVICES DIVISION			1	100%	1
COMPUNET CLINICAL LAB			1	100%	1
CORAL GABLES HOSPITAL			1	100%	1
BARDMOOR LABORATORY			1	100%	1

Coronavirus: testing by laboratory

Data through Jul 4, 2020 verified as of Jul 5, 2020 at 09:25 AM

Data in this report are provisional and subject to change.

The numbers in the table below represent the number for whom test results were received by the Department of Health. A person can be tested by more than one laboratory and can have both positive and negative results. **Therefore, the sum of the numbers in each column will be larger than the total number of people tested.**

Reporting lab	Inconclusive	Negative	Positive	Percent positive	Total
CENTRA CARE CONWAY			1	100%	1
COASTAL LABORATORIES			1	100%	1
EXCEL URGENT CARE OF NJ			1	100%	1
HEALTH NETWORK LABORATORIES		1			1
JRS LABORATORY			1	100%	1
CQUENTIA NGS, LLC			1	100%	1
DOCS URGENT CARE			1	100%	1
ERIE COUNTY MEDICAL CTR CLINICAL LABS		1			1
INDIAN RIVER CLINICAL LABORATORY, INC.		1			1
INTERMOUNTAIN MEDICAL CENTER			1	100%	1
Lourdes Hospital			1	100%	1
GENETRAIT LABORATORIES			1	100%	1
GRAND VIEW HOSPITAL			1	100%	1
HEALTH FIRST IBM-UX			1	100%	1
BMC/JACSONVILLE		1			1
CLEVELAND CLINIC OHIO LABORATORIES			1	100%	1
DHEC - S.C PUBLIC HEALTH LAB			1	100%	1
MHS LAB		1			1
MOLECULAR DIAGNOSTICS			1	100%	1
NEW YORK STATE ELR - LONG ISLAND JEWISH VALLEY STREAM		1			1
LAB CORP PHOENIX			1	100%	1
LABCORP-PORT ST.LUCIE		1			1
LATE HOURS URGENT CARE			1	100%	1
HEART OF FLORIDA HMA			1	100%	1
HIGHLANDS CLINICAL LABORATORY			1	100%	1
KANSAS DEPARTMENT OF HEALTH			1	100%	1
BEAUMONT HOSPITAL, GROSSE POINTE			1	100%	1
CHARLOTTE CHD PORT CHARLOTTE		1			1
COMMONWEALTH OF MASSACHUSETTS			1	100%	1
MAGNOLIA ADULT, LLC			1	100%	1
BAPTIST HEALTH MEDICAL CENTER			1	100%	1
BEAUFORT MEMORIAL			1	100%	1
ST VINCENT'S CHILTON		1			1
DICKERT			1	100%	1
ECLRS			1	100%	1
HAWAII DEPARTMENT OF HEALTH LAB			1	100%	1
BAYCARE MEDICAL GROUP INC			1	100%	1
BOZEMAN HEALTH DEACONESS HOSPITAL		1			1
CAROMONT HEALTH			1	100%	1
MONTANA DEPARTMENT OF PUBLIC HEALTH & HUMAN SERVICES			1	100%	1
Mt Sinai Aventura			1	100%	1
NEW YORK STATE ELR - ERIE COUNTY MEDICAL CTR CLINICAL LABS		1			1
LABCORP HOUSTON			1	100%	1
LEESBURG FAMILY MEDICINE		1			1
LOYOLA UNIVERSITY MEDICAL CENTER LABORATORY			1	100%	1
GUTHRIE MEDICAL GROUP LABORATORIES		1			1
JOHNS HOPKINS MEDICAL LABS			1	100%	1

Coronavirus: testing by laboratory

Data through Jul 4, 2020 verified as of Jul 5, 2020 at 09:25 AM

Data in this report are provisional and subject to change.

The numbers in the table below represent the number for whom test results were received by the Department of Health. A person can be tested by more than one laboratory and can have both positive and negative results. **Therefore, the sum of the numbers in each column will be larger than the total number of people tested.**

Reporting lab	Inconclusive	Negative	Positive	Percent positive	Total
LAKEWOOD RANCH ER 24/7			1	100%	1
GARCIA CLINICAL LABORATORY		1			1
GENESIS LABORATORY MANAGEMENT			1	100%	1
GIFFORD MEMORIAL HOSPITAL		1			1
ACCESSLAB		1			1
ANNE BATES LEACH EYE HOSPITAL/ ABLEH MICROBIOLOGY LABORATORY		1			1
BAY CARE LAB SERVICES/ST. ANTHONY'S HOSPITAL			1	100%	1
MARION COUNTY HEALTH DEPARTMENT			1	100%	1
MEDICAL CENTER ENTERPRISE			1	100%	1
MIAMI CANCER INSTITUTE			1	100%	1
UNIVERSITY LAB			1	100%	1
VA GREATER LOS ANGELES HEALTH CARE SYSTEM			1	100%	1
VA HOSPITAL			1	100%	1
TAMPA		1			1
TIMPANOGOS REGIONAL HOSPITAL			1	100%	1
UAB			1	100%	1
ORMOND BEACH CENTRA CARE			1	100%	1
PARKWAY REGIONAL MEDICAL CENTER LAB			1	100%	1
ST. LUKE'S HOSPITAL - BETHLEHEM CAMPUS		1			1
WEST VIRGINIA UNIVERSITY HOSPITALS			1	100%	1
NEW YORK STATE ELR - NEW YORK CITY DEPARTMENT OF HEALTH & MENTAL		1			1
OHIO DEPARTMENT OF HEALTH			1	100%	1
NEW YORK STATE ELR - BELLEVUE HOSPITAL CENTER DEPARTMENT		1			1
ONSLOW MEMORIAL HOSPITAL LABORATORY		1			1
POARCH BANC CREEK INDIANS TRIBAL HEALTH DEPARTMENT			1	100%	1
NEW YORK STATE ELR - LABORATORY ALLIANCE OF CENTRAL NEW		1			1
NAVAL HOSPITAL OF JACKSONVILLE			1	100%	1
NEW YORK STATE ELR - AUBURN COMMUNITY HOSPITAL		1			1
SPECIALITY LABORATORIES,INC		1			1
STANLY REGIONAL MEDICAL CENTER			1	100%	1
TAMIAMI LAB MILLENIUM			1	100%	1
PPD			1	100%	1
SANFORD REGIONAL HOSPITAL WORTHINGTON		1			1
SENTARA NORFOLK GENERAL HOSPITAL CENTRAL LAB			1	100%	1
FLORIDA DEPARTMENT OF HEALTH PALM BEACH COUNTY			1	100%	1
TEN HEALTHCARE			1	100%	1
THE UNIVERSITY OF VERMONT MEDICAL CENTER		1			1
THOMAS LANGLEY			1	100%	1
REMISE OCCUPATIONAL HEALTH SOLUTIONS INC			1	100%	1
SANFORD SOUTH UNIVERSITY		1			1
ST. JOSEPH'S HOSPITAL NORTH			1	100%	1
UNK			1	100%	1
URGENT CARE TCMA			1	100%	1
Viracor Eurofins			1	100%	1
UF KANAPAHA LAB BEAKER		1			1
UNIVERSITY OF FLORIDA			1	100%	1
UNIVERSITY OF MIAMI			1	100%	1

Coronavirus: testing by laboratory

Data through Jul 4, 2020 verified as of Jul 5, 2020 at 09:25 AM

Data in this report are provisional and subject to change.

The numbers in the table below represent the number for whom test results were received by the Department of Health. A person can be tested by more than one laboratory and can have both positive and negative results. **Therefore, the sum of the numbers in each column will be larger than the total number of people tested.**

Reporting lab	Inconclusive	Negative	Positive	Percent positive	Total
NAVAL BRANCH MEDICAL CLINIC			1	100%	1
NORTH BROWARD MEDICAL CENTER			1	100%	1
NOT GIVEN			1	100%	1
TUFTS MEDICAL CENTER			1	100%	1
WILLIAM A HINTON STATE LABORATORY INSTITUTE			1	100%	1
MIDMICHIGAN MEDICAL CENTER			1	100%	1
QUEST DIAGNOSTIC INC TECHINICAL			1	100%	1
QUEST DIAGNOSTICS-OCALA-SE 3RD		1			1
REGIONAL MEDICAL LABORATORY			1	100%	1
PEDIATRIC ASSOCIATES - JACKSONVILLE			1	100%	1
PHELPS HOSPITAL LABORATORY		1			1
PREMIER MEDICAL LABORATORY			1	100%	1
WOLFSON (USE BAPTIST)			1	100%	1
ACCESS HEALTH CARE PHYSICIANS			1	100%	1
AFC URGENT CARE			1	100%	1
SUNY UPSTATE MEDICAL UNIVERSITY			1	100%	1
THE CHILDREN'S HOSPITAL OF PHILADELPHIA		1			1
UW HOSPITAL AND CLINICS			1	100%	1
BLOOD SYSTEMS LABORATORIES			1	100%	1
CATHOLIC HEALTH SYSTEM DEPT LABORATORY		1			1
DELAWARE DIAGNOSTICS LABS			1	100%	1
BAYCARE ALLIANT HOSPITAL			1	100%	1
BAYCARE OUTREACH LAB			1	100%	1
BIRMINGHAM VAMC		1			1
NEW YORK STATE ELR - NEW YORK PRESBYTERIAN-LOWER MANHATTAN		1			1
NORTHSIDE HOSPITAL DULUTH			1	100%	1
NORTHWEST FL COMM HOSP			1	100%	1
WILMINGTON VA MEDICAL CENTER			1	100%	1
WUESTHOFF MEDICAL CENTER-MELBOURNE			1	100%	1
NEW YORK STATE ELR - MONTEFIORE MEDICAL CENTER LABORATORIES - WEILER			1	100%	1
SONIC REFERENCE LABORATORY			1	100%	1
SPRING HILL REGIONAL HOSPITAL			1	100%	1
STATEN ISLAND UNIVERSITY HOSPITAL SEGUINE AVE		1			1
OHIO STATE UNIVERSITY MEDICAL CENTER			1	100%	1
ONEIDA HEALTHCARE CENTER		1			1
SMITH KLINE			1	100%	1
Total	5166	2,402,605	254,652	10%	2,662,423