



COVID-19

Screening for Older Adults

FloridaHealth.gov/COVID-19 • Florida Department of Health

1

Are you experiencing symptoms?

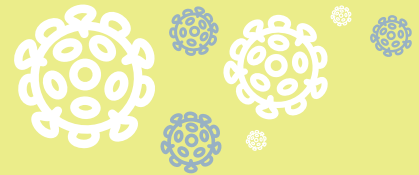
Symptoms may appear in 2–14 days after exposure to the virus.

The most common symptoms of COVID-19 are **cough and shortness of breath**. Other symptoms include fever, chills, fatigue, muscle or body aches, headache, new loss of taste or smell, sore throat, congestion or runny nose, nausea or vomiting, and diarrhea.



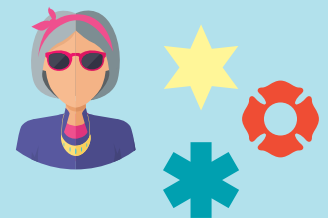
2

Have you been around someone diagnosed with COVID-19?



3

Are you 65+ years old, have underlying health conditions, are a health care worker or a first responder?



If you answered “yes” to any of the above questions, call your health care provider or your county health department (CHD) by scanning the code for the local CHD finder. Or call 1-866-779-6121.



Guidance

- Avoid contact with sick people.
- Wash hands often with soap and water for at least 20 seconds.
- Wear a face mask and social distance for at least 6 feet when in public.

The CDC has new options to reduce quarantine. Scan the code to learn more.

